

TENDER DOCUMENT

**Set up Interior Work Artificial Inseminator Training Centre at Cow Sanctuary
Muzaffarnagar Uttar Pradesh**

NDS/RHR/COW_SANCTURY/MUZAFFARNAGAR/INTERIOR/FEB/25-26

Issued by

NDDB Dairy Services



POINTS BIDDERS SHOULD BEAR IN MIND

- 1) BIDS CONTAINING DEVIATIONS FROM BIDDING DOCUMENT TERMS AND OTHER REQUIREMENTS MAY BE REJECTED.
- 2) BIDS UPLOADED WITHOUT SUBMISSION OF EARNEST MONEY DEPOSIT **(if applicable)** SHALL BE SUMMARILY REJECTED.
- 3) NEGLIGENCE OF THE BIDDER IN PREPARING TENDER BID CONFERS NO RIGHT TO WITHDRAW THE BID AFTER IT WAS OPENED.
- 4) THE BID, ALONGWITH ENCLOSURES SHOULD BE IN ENGLISH ONLY.
- 5) THE BIDDING DOCUMENTS SHALL BE GOVERNED AND INTERPRETED ACCORDING TO THE LAWS OF THE UNION OF INDIA.
- 6) NDDDB Dairy Services RESERVES THE RIGHT TO ACCEPT OR REJECT ANY OR ALL BIDS WITHOUT ANY EXPLANATION TO BIDDERS.

CHECK LIST

- | | | |
|-----------|--|--------|
| 1. | Have you submitted the original EMD to NCDFI on or before the date & time mentioned in the bid document? | Yes/No |
| 2. | Have you quoted Bid prices? | Yes/No |
| 3. | Have you uploaded the Form of Bid? | Yes/No |
| 4. | Have you uploaded the duly digitally signed/signed documents completed in all respect? | Yes/No |
| 5. | Have you noted the Service Period mentioned in the bid ? | Yes/No |
| 6. | Have you kept your offer valid for 120 days? | Yes/No |
| 7. | Have you furnished copies of your PAN, GST Reg. No., PF Registration No. etc. (as per statutory requirement of above services) | Yes/No |
| 8. | Have you uploaded the Statements of Deviations (Preferably Nil) (| Yes/No |

Index

Particulars	Page No
Initiation to Bids	5-6
Instruction to bidder	7-26
Compliances	27
Technical Specification	28-88
Approved Make & Models	89-93
Drawing	94-101

Invitation of Bids:

Tender Reference: NDS/RHR/COW_SANCTURY/MUZAFFARNAGAR/INTERIOR/FEB/25-26

Execution of Interior Works at Artificial Insemination Training Centre, Cow Sanctuary, Muzaffarnagar, Interior Works, Electrical and ELV Works, Electrical Appliances, Lighting Fixtures, HVAC Works

Bid Ref:	NDS/RHR/COW_SANCTURY/MUZAFFARNAGAR/INTERIOR/FEB/25-26
Description	Execution of Interior Works at Artificial Insemination Training Centre, Cow Sanctuary Muzaffarnagar
Estimated Cost	2.49 Crores
EMD	Rs. 2.0 Lakh Bidders are requested to deposit the Earnest Money Deposit (EMD) directly into their respective Escrow Accounts provided by NCDFI. The Escrow account details can be accessed through the registration portal (Link: https://registration.ncdfimarket.com/). After depositing the EMD, please confirm the same by emailing etenders@ncdfimarket.com , along with the UTR details and the relevant tender reference against which the EMD has been deposited. For any clarification or support regarding the Escrow account, you may contact Janvi Patel – 9978603225 Sagar Gusain - 99786 07330 After the successful completion of the contract, NCDFI will deduct TC (Transaction charges) at 0.4 % (+ 18% GST) and TDS under section 194 (O) at 0.1 % of the Trade Value from the EMD/SD.
Bid Start Date	11 Feb 2026
Pre-bid meeting	For any queries related to the pre-bid, vendors may contact at samar.rehman@nddbdairyservices.com on or before 18 Feb 2026.
Sale of bid End Date	5 March 2026 3:00 pm
Last Date & Time of Submission of bid	15:00 hr on 05.03.2026
Bid Opening	15:30 hr on 05.03.2026
Delivery Period	Within 45 days from date of receipt of PO
Delivery Location	Tuglakapur village Block Purkaji Cow Sanctuary Muzaffarnagar UP
Evaluation of offer	Overall Basis
Payment Terms:	Payment shall be made in two stages: <ol style="list-style-type: none">1. 70% of the total order value shall be released against the supply of goods, subject to submission of the invoice and satisfactory receipt of materials.

	2. The remaining 30% shall be released after successful installation, testing, and commissioning of the supplied goods, along with submission of the final invoice.
--	--

Instructions to Bidder

1.1 The bidders must meet the following minimum qualifying criteria:

- 1.** Experience of having successfully completed Interior & Furniture work for any state govt., central govt., and any other Govt./Semi Govt. Organization or Renowned non Govt Organizations :
 - a) Three similar works, each costing not less than the amount equal to 40% of the probable amount of contract during the last 3 financial years;
OR
 - b) Two similar works, each costing not less than the amount equal to 60% of the probable amount of contract during the last 3 financial years;
OR
 - c) one similar work of aggregate cost not less than the amount equal to 80% of the probable amount of contract in any one financial year during the last 3 financial years;
- 2.** Orders meeting eligibility criteria should be Central / State Govt Organization / PSU with in India and Scope of work done in that is properly Evaluated and technically checked before Clearance of their technical Bid.
- 3.** Average annual turnover on the Interior & furniture works not less than 50% of the probable amount of contract during the last 03 financial years. Audited Balance sheet & Profit & Loss of Last 03 year duly Signed by CA with valid UDIN number to be submitted.
- 4.** Manufacturer/Bidder should be submitted PAN, GSTIN, Company Registration, ESIC, EPF, Factory/Manufacturing plant license.
- 5.** The furniture items that have to be supplied as per tender should be of Reputed Brand only bearing Quality and important approvals certificates relevant to Furniture of product.
- 6.** The firm/contractor shall supply samples/mock up of fabricated items / loose/fixed furniture items at no extra cost for any/all items as per the scheme/specifications submitted by the Architects/as called for the approval when called for submission of bids. The samples rejected or not found acceptable shall be returned. No additional cost for loading unloading transportation and handling shall be paid for the samples. The approved samples shall be retained till the completion of the supplies.
- 7.** Works/supplies may be awarded to one or more vendors depending on the samples supplied and approved, specialization of the agency and capability of the firm at the sole discretion of the **NDS** and no claims on any such account would be entertained.
- 8.** The bidder must submit Valid certificates of the make mentioned in the tender document and for which they are quoting at the time of supply for modular furniture.
- 9.** The bidder must have experience of minimum 3 years in successful completion of similar work of nature and complexity comparable to the proposed contract ending last day of month previous to the one in which applications are invited.
 - i. Copy of the Income Tax Returns for three previous years for income tax purpose.
Audited financials including cash flow statement for last 3 financial years.
 - b) Even though the bidder's meet the specified criteria, it may be disqualified if it has:
 - i. Made untrue or false declaration in the forms, statements and attachments submitted

in proof of their qualification

ii. Poor documented record based on the feedback from other milk producer organizations from their own experience in the delivery, installation, performance, service and also in abandoning the works, not properly completing the contract, inordinate delays, or financial failure etc.

iii. If the bidder is overbooked beyond his capacity to execute the work as per required schedules.

1.2 Eligible Bidders

This invitation for Bids is open to all suppliers who have downloaded this bidding document in their name and meet the minimum eligibility criteria, if any, specified in this bidding document.

1.3 Bidding Document

The fee/cost for bidding document is NIL.

The Bidder shall bear all costs associated with the preparation and submission of its bid, and the NDDDB Dairy Services hereinafter referred to as "Procuring Agency", will in no case be responsible or liable for those costs, regardless of the conduct or outcome of the bidding process. Interested eligible bidders may obtain further information from Manager (Procuring Agency) Sh. Samar Rehman, Address **NDDDB House, Safdarjung Enclave, New Delhi, Southwest Delhi, Delhi, 110029**
011-4988300/49883088/

Downloading the Document

- The bid documents will be available in the website at <https://www.ncdfmarket.com/> and can be downloaded and used as tender documents for uploading the offer.
- It is hereby brought to the notice of all bidders that if any change/additions/deletions/alterations are found to be made by them in the tender and the same is subsequently noticed at any stage, even after award of the contract, the bidders are liable for all consequences thereof and NDDDB Dairy Services (NDS) shall be free to take suitable action as deemed necessary.

1.4 Content of Bidding Documents

The services required, bidding procedures and contract terms are prescribed in the Bidding Documents.

The Bidder is expected to examine all instructions, forms, terms and specifications in the Bidding Documents. Failure to furnish all information required by the Bidding Documents or submission of a bid not substantially responsive to the Bidding Documents in every respect will be at the Bidder's risk and may result in the rejection of its bid.

Clarification of Bidding Documents

A prospective Bidder requiring any clarification of the Bidding Documents may notify the NDS in writing/fax/telex/email at the NDS's mailing address indicated in the Invitation for Bids. The Procuring Agency will respond in writing to any request for clarification of the Bidding Documents, which it receives not later than 7 days prior to the deadline for the submission of bids prescribed by the Procuring Agency. If required, written copies of the Procuring Agency's response (including an explanation of the query but without identifying the source of inquiry) will be uploaded in the websites mentioned.

1.5 Amendment of Bidding Documents

At any time prior to the deadline for the submission of bids, the NDS may for any reason whether at its own initiative or in response to a clarification requested by a prospective bidder, modify the bidding document by the issuance of amendment.

The amendment will be uploaded on NDS/NCDFI website. Before submission of the bid, the bidder should check the NDS/NCDFI website for any Corrigendum/additional information on the bidding document, if any.

The amendment will be also uploaded on NCDFI's website. Before submission of the bid, the bidder should check the NCDFI's website for any Corrigendum/additional information on the bidding document, if any

However, non-information in changes/amendments put on website as Corrigendum to the prospective bidders shall not bind the NDS to extend the deadline for the submission of the bids and non-compliance to such Corrigendum by the bidder shall result to non-responsiveness of the bid leading to rejection.

1.6 Preparation of Bid.

The Bid prepared by the Bidder and all correspondence and documents relating to the bid exchanged by the Bidder and the Procuring Agency, shall be written in the English language

1.7 Documents comprising the bid

The Bid prepared by the Bidder shall comprise the following documents:

- a. A complete description of Services the Bidder to provide and a price schedule completed in accordance with clause
- b. Earnest Money Deposit in accordance
- c. Documentary evidence establishing bidder's eligibility and qualifications
- d. Documentary evidence establishing eligibility and conformity of services
- e. A price schedule completed in all respect.
- f. Even though the applicants meet the above criteria, they are subject to be disqualified if they have:
 - i. Made untrue or false representations in the forms, statements and attachments submitted in proof of the qualification requirements; and or,
 - ii. Poor documented record based on the feedback from other milk producer organizations from their own experience in the delivery, installation, performance, service and also in abandoning the works, not properly completing the contract, inordinate delays, or financial failure etc.
 - iii. Notwithstanding anything stated above, the Procuring Agency reserves the right to assess the Bidders capabilities and capacity to execute the contract satisfactorily before deciding on award.

Any exceptions the Bidder wishes to take in any aspect of the bidding document or payment schedule including a justification for the exception in the format furnished in **Error! Reference source not found.**

1.8 Bid Form

- a. The Bidder shall complete the Bid Form furnished in the Bidding Documents and upload the same on the e-portal submit the same along with technical bid.
- b. All the required document duly signed/digitally signed should be uploaded on or before the specified date and time at NCDFI website.

1.9 Bid Submission:

- a. The Bidder shall fill up the Technical and Price Bid at NCDFI Portal mentioning the final prices of the services under the Contract. Bidders must submit a bid for the full quantity specified under Scope of work, failing which,

such bids will not be considered for evaluation and comparison and will not be considered for award.

b. The Bidder shall quote their prices in NCDFI E-Portal only

1.10 Bid Currencies

For a service covered in this Bidding Document, prices shall be quoted in Indian Rupees only.

1.11 Documents Establishing Bidders' Eligibility and Qualifications

- a. Bidder shall furnish, as part of its bid, documents establishing the Bidder's eligibility to bid and its qualifications to perform the Contract if its bid is accepted.
- b. The documentary evidence of the Bidder's eligibility to bid shall establish to the Procuring Agency's satisfaction that the Bidder, at the time of submission of its bid is eligible to bid as defined under Section 2.
- c. The documentary evidence of the Bidder's qualifications to perform the Contract if its bid is accepted, shall establish to the Procuring Agency's satisfaction:
- d. That the Bidder has the financial and technical capability necessary to perform the Contract and meet the minimum qualifying criteria specified at Section 2. To this end, all bids submitted shall include the following information:
 - e. Copies of original documents defining the constitution or legal status, place of registration and principal place of business of the company or firm or partnership etc.
 - f. Details of experience and past performance of the bidder on the contract's similar nature within the last 3 years and details of current contracts in hand and other commitments.
 - g. Bidders shall invariably furnish documentary evidence (Client's certificate) in support of the satisfactory completion of the services provided.
 - h. Qualification and experience of key personnel for successful execution of the contract;
 - i. Reports on financial standing of the Bidder such as profit and loss statements, balance sheets and auditor's report of the past three years etc.;
 - j. Information regarding any current litigation in which the Bidder is involved.

Bidders who meet the criteria given above are subject to

be disqualified, if they have made untrue or false representation in the forms, statements and attachments submitted in proof of the qualification requirements or have record of poor performance such as abandoning the work, not properly completing the contract etc.

1.12 Documents Establishing Eligibility and Conformity to Bidding documents

- a. Bidder shall furnish, as part of its bid, documents establishing the eligibility and conformity to the Bidding Documents for all services, which the Bidder proposes to provide under the Contract.
- b. The documentary evidence of the services conformity to the Bidding Documents may be in the form of literature, drawing and data, and shall furnish:
- c. A statement of deviations and exceptions to the scope of work in the format furnished in the bidding document (Section VII (A)- Technical Deviation Statement Form and commercial Deviation Statement Form).

1.13 Earnest Money Deposit (EMD)

The payment should be made on or before **12:00 PM** on the date of submission of bids. Tenderer must submit an EMD of Rs. 2,00,000 (Rupees Two Lakh only) in the format of e-payment irrespective of the items quoted i.e. schedule wise EMD amount as mentioned in the document will not be considered. Without EMD, the tender will be summarily rejected.

- ii) Payment of Earnest Money by cheque, T.D.R and F.D.R. will not be accepted.

iii) Transaction Fees and TDS:

- a) As the bidding is processed through the NCDFI Portal, the awardee vendor must pay:
 - i. **Transaction Fee - 0.40%** of the contract value (+ applicable GST).
 - ii. **TDS u/s 194/O - 0.10%** of the contract value.
- b) Payment must be made within two working days of contract award.
- c) Any adjustments in transaction fees and TDS based on the final contract value must be paid promptly or will be adjusted against the EMD amount deposited.

For EMD payment made (RTGS/NEFT), the bidder is requested to send the communication by 12.30 PM on the date of submission of bids in following format through e-mail to etenders@ncdfimarket.com. The bidder is also required to submit/upload the successful transaction details along with technical bid.

1.14 The EMD may be forfeited:

- a) If a bidder withdraws or modifies its bid during the period of bid validity
- OR**
- b) In the case of the successful bidder, if the bidder fails to sign the Contract (i.e., return the signed copy of duplicate Purchase Order, and furnish Performance Security, if asked for)

Unsuccessful bidder's bid security will be discharged / returned as promptly as possible but not later than 30 days after the expiration of the period of the bid validity of 120 days from the date of bid opening. The successful Bidder's EMD will be discharged upon the Bidders executing the Contract i.e., return the signed copy of duplicate Purchase Order, and furnish the Performance Security, if asked for.

- c) Pursuant to Clause No.1.9 the Bidder shall furnish, as part of its bid, EMD as specified in the Schedule of Requirements.
- d) The EMD security is required to protect the Procuring Agency against the risk of Bidder's conduct, which would warrant the security's forfeiture.
- e) The EMD shall be denominated in Indian Rupees only, and shall be in one of the following forms:
- f) A Demand Draft in favor of NCDFI, payable at as given above from any Nationalized Bank / Scheduled Bank / Foreign Banks having branches in India.
- g) Any bid not accompanied with EMD will be rejected by the Procuring Agency as non- responsive.
- h) Unsuccessful Bidder's EMD will be discharged/returned as promptly as possible but not later than 30 days after the expiration of the period of bid validity prescribed by the Procuring Agency, pursuant to Clause 2.16.
- i) The successful Bidder's EMD will be discharged upon the Bidders executing the Contract and furnishing the performance security.
- j) The EMD may be forfeited: If a Bidder withdraws or modifies its bid during the period of bid validity specified by the Bidder on the Bid Form; or
- k) In the case of these successful Bidder, if the Bidder fails:
 - a. To sign the undertaking and contract in accordance with Clause 2.31;

And

 - b. To furnish performance security in accordance with Clause 2.36.

1.15 Period of Validity of Bids

- a. Bids shall remain valid for 120 days after the date of bid opening prescribed by the Procuring Agency. A bid valid for

a shorter period shall be rejected by the Procuring Agency as non-responsive.

- b. In exceptional circumstance, the Procuring Agency may prior to the expiry of initial validity period solicit the Bidder's consent to an extension of the period of validity. The request and the responses thereto shall be made in writing (or by cable or telex or fax). The EMD provided under Clause 15 shall also be suitably extended. A Bidder may refuse the request without forfeiting its EMD. A Bidder granting the request will not be required nor permitted to modify its bid.

1.16 Format and Signing of Bid

- a. The uploaded bid shall be digitally signed by the Bidder or a person or persons duly authorized to bind the Bidder to the Contract. The latter authorization shall be indicated by written power-of-attorney accompanying the Bid.

1.17 Submission of bid

- a. The bidders, who downloaded the bidding documents, are eligible for submission of bids in their names only. **The complete bidding document downloaded has to be uploaded along with the bid** without any modifications/alternations, as a token of their acceptance towards enclosed scope of work, terms and conditions unconditionally.

1.18 Deadline for Submission of Bids

- a. Bids must be submitted NCDFF Portal not later than the time specified for receipt of the bids in the Invitation for Bids (Section I). The **EMD (in original) should be delivered to communication address as stated** below, on or before the last date and time of receipt of bids.
- b. The Procuring Agency may, at its discretion, extend this deadline for the submission of bids by amending the Bidding Documents, in which case all rights and obligations of the Procuring Agency and Bidders previously subject to the deadline will thereafter be subject to the deadline as extended.

1.19 Late receipt of EMD

Any EMD received by the Procuring Agency after the deadline for submission of bid prescribed by the Procuring Agency, the bid shall be rejected.

1.20 Modification and Withdrawal of Bids

- a. The Bidder cannot modify or withdraw its bid after the bid's submission.
- b. No bid can be modified subsequent to the deadline for submission of bids.
- c. No bid may be withdrawn in the interval between the deadline for submission of bids and the expiration of the period of bid validity specified by the Bidder on the Bid Form. Withdrawal of a bid during this interval may result in the forfeiture of Bidder's EMD.

1.21 Bid Opening and Evaluation

The NDS will open the Technical bids (of those bidders whose **Original EMD, in acceptable form**, have reached the office of NCDFI on the time and date stated in the IFB. Bidders can witness Virtual bid opening of bid.

Commercial bids will be opened electronically of only those bidders whose Technical Bid (Part-I) is found to be acceptable by NDS. Such bidders will be intimated regarding date of opening of Part II- Commercial Bid separately.

The NDS will examine the bids to determine whether they are complete, whether the requisite EMD have been furnished, whether the documents have been properly uploaded, and whether the bids are generally in order.

1.22 Preliminary Evaluation

The Procuring Agency will examine the technical bids to determine whether they are complete, whether required supporting documents have been furnished, and whether the bids are generally in order.

The Procuring Agency will also examine whether the bid is complete. If the prices of certain item are found as "0" ("ZERO") it will be presumed that the bidder has included the cost of these items against some other items of the price bid. The bidder shall furnish/upload the details of such inclusions separately.

If the Procuring Agency considers that with these omissions, the offered services is not functional, then the bid will be treated as incomplete and non-responsive.

Arithmetical errors – Not Applicable

Prior to the detailed evaluation, the Procuring Agency will determine the substantial responsive to the bidding documents. For purposes of these clauses,

a substantially responsive bid is one, which conforms to all the

terms and conditions of the Bidding Documents without material deviations. A material deviation is one which affects in any substantial way the functionality, scope, quality or performance of the deliveries or which limits in any substantial way inconsistent with the bidding documents, the Procuring Agency's rights or the bidder's obligations under the contract and the rectifications of which deviations would affect unfairly the competitive position of other bidders presenting substantially responsive bids. The Procuring Agency's determination of a bid's responsiveness is to be based on the contents of the bid itself without recourse to extrinsic evidence.

A bid determined as not substantially responsive will be rejected by the Procuring Agency and may not subsequently be made responsive by the Bidder by correction of the non-conformity.

The Procuring Agency may waive any minor informality or non-conformity or irregularity in a bid which does not constitute a material deviation, provided such waiver does not prejudice or affect the relative ranking of the Bidder.

1.23 Evaluation and Comparison of Bids

- a. The Procuring Agency will evaluate and compare the bids previously determined to be substantially responsive, pursuant to Clause 2.23 No bid will be considered if the complete requirement covered under the scope of work is not included in the bid. The unit price quoted should be after considering the discount, if any.
- b. The evaluation and comparison of bids will be done on the basis of quoted prices inclusive of applicable taxes and duties as mentioned in price schedule.

1.24 Bid Prices

- a. The Bidder shall indicate on the Price Bid at NCDFI e-Portal the final unit prices (after considering discount, if any) of the goods it proposes to supply under the Contract. Bidders must submit a bid for the full quantity specified under technical specifications, failing which, such bids will not be considered for evaluation and comparison and will not be considered for award. The item wise quoted price should be inclusive of applicable GST.
- b. The item wise price of goods/services to be entered in the NCDFI e-portal shall be on FOR site basis inclusive of applicable GST, but including the charges for packing and forwarding, transportation, transit insurance and all other local costs incidental to delivery of goods/services to their final destination, storage cum erection insurance and safe custody at site.

- c. Please note that it is recommended for the supplier to indicate a single GST rate, as in many cases items may be procured on a composite basis, and a uniform GST rate would apply applicable

It should also be noted that the price evaluation of each item will be based on the total price inclusive of GST, irrespective of the GST rate quoted by the supplier. No price increase will be entertained after bid submission, and if the bidder refuses to honor their quoted price after the price bid is opened, their EMD may be forfeited.

For example, if a supplier quotes a unit price of ₹100 with an applicable GST of 18% , the total price including GST would be ₹118. However, if the actual applicable GST as per the HSN code is 28% , the purchaser will reverse-calculate the base price from ₹118. In this case, the basic price would be ₹92.1875, and 28% GST on that amount (₹25.8125) would again result in ₹118. Hence, the price including GST (₹118 in this example) will be considered for evaluation purposes. Bidders are advised to quote accordingly.

1.25 Prices indicated on the Price Bid shall be entered in the following manner:

- a. The item wise price of goods to be supplied/installed and commissioned shall be on FOR site basis inclusive of applicable GST. The item wise price shall also include the charges for packing and forwarding, transportation, transit insurance and all other local costs incidental to delivery of the goods to their final destination, storage cum Erection insurance and safe custody at site.
- b. The Bidder's separation of price components in accordance with above will be solely for the purpose of facilitating the comparison of bids by the Procuring Agency and will not in any way limit the Procuring Agency's right to contract on any of the terms offered.

1.26 Fixed Price

Basic Price quoted by the Bidder shall be fixed during the bidder's performance of the Contract and not subject to variation on any account. A bid submitted with an adjustable price quotation for such goods and services will be treated as non-responsive and rejected.

1.27 Price Break-up

Bidders shall furnish the price for the supply and for installation/ commissioning along with detailed cost break-up (item wise), which will be applicable for progressive payments. Items and works for which no break-up price is furnished by the bidder

will not be paid for by the Procuring Agency when supplied/executed and shall be deemed covered by the other break-up prices.

However, for evaluation purpose, prices quoted as indicated in Para 2.25 above only will be considered.

Notwithstanding anything stated elsewhere in the bidding documents, irrespective of mode of the contracting with the successful bidder, the successful bidder will be liable for the payment of Indian Income Tax, surcharge on Income Tax and any other Corporate Tax, turnover tax etc. if attracted under the provisions of the law. The Procuring Agency shall not bear any tax liability whatsoever irrespective of the mode of contracting

1.28 Contacting the Procuring Agency

- a. Subject to Clause 2.23, no Bidder shall contact the Procuring Agency on any matter relating to its bid, from the time of the bid opening to the time the Contract is awarded.
- b. Any effort by a Bidder to influence the Procuring Agency in the Procuring Agency's bid evaluation, bid comparison or contract award decisions may result in the rejection of the Bidder's bid.

1.29 Post Qualification

- a. In the absence of pre-qualification, the Procuring Agency will determine to its satisfaction whether the Bidder selected as having submitted the lowest evaluated responsive bid is qualified to satisfactorily perform the Contract.
- b. The determination will consider the Bidder's financial, technical and servicing capabilities. It will be based upon an examination of the documentary evidence of the Bidder's qualifications submitted.
- c. An affirmative determination will be a prerequisite for award of the Contract to the Bidder. A negative determination will result in rejection of the Bidder's bid, in which event; the Procuring Agency will proceed to the next lowest evaluated bid to make a similar determination of that Bidder's capabilities to perform satisfactorily.

1.30 Award of Contract

Purchaser will award the contract to the successful bidder whose bid has been determined to be substantially responsive and has been determined as the lowest evaluated bid provided further the

bidder is determined to be qualified to perform the contract satisfactorily as per clause 28.

1.31 Purchasers Right to Vary Quantities at the Time of Award.

The Purchaser reserves the right to vary the quantities at the time of award of the contract, if the need arises in consultation with the successful bidder.

1.32 Purchaser's Right to Accept Any Bid and to Reject Any or All Bids

NDS. does not bind itself to accept the lowest bid. NDS reserves the right to award the job either in part or full. NDS at its sole discretion and without assigning any reason thereof, also reserves the right to accept any/or reject any or all bids.

NDS also reserves the right to annul the bidding process and reject all bids at any time prior to award of Contract, without thereby incurring any liability to the affected Bidder or Bidders or any obligation to inform the affected Bidder or Bidders of the group NDS for the Purchaser's action.

1.33 Notification of Award

- a. The evaluation and rate discovery to done by Procuring Agency, but the issuance of PO/Notification of Award will be issue by Purchaser (respective milk producer company).
- b. Prior to expiration of the period of bid validity, the Purchaser will notify the successful Bidder in writing by registered letter/courier/by cable/telex/fax/e-mail, to be confirmed in writing by registered letter/courier, that its bid has been accepted.
 - c. The notification of award will constitute the formation of the Contract.
- d. Upon the successful Bidder's furnishing of performance security, the Procuring Agency will discharge the EMD of unsuccessful bidders.

1.34 Signing of Contract

- a. As the Procuring Agency notifies the successful Bidder that its bid has been accepted, the bidder is requested to submit the "Undertaking" as provided in the Bidding Document, incorporating all agreements between the parties.
- b. Successful bidder needs to sign the Agreement

- c. The “Undertaking” and “Acceptance copy of the contract” shall be returned within 15 days from the date of contract.

1.35 Performance Security

- a. Within 30 days of the receipt of notification of award from the Purchaser, the successful Bidder shall furnish the **performance BG (5% of total contract amount)** in accordance with the Conditions of Contract, in the Performance Security Form/DD provided in the Bidding Documents or another form acceptable to the Purchaser. Bank guarantee issued only by Nationalized/Scheduled commercial Banks/Foreign banks having branches in India will be accepted.
- b. Failure of the successful Bidder to comply with the requirement of Clause 2.31 or Clause 2.32 shall constitute sufficient reason for Purchase for the annulment of the award and forfeiture of the EMD, in which event the Purchaser may make the award to the next lowest evaluated bidder or call for new bids.
- c. If the bid of the successful bidder is seriously unbalanced in relation to the Purchaser estimate of the real cost of the work to be performed under the contract, the Purchaser may require additional performance security to protect the Purchaser against financial loss in the event of subsequent default of the successful bidder under the contract. The value of the additional performance security shall be decided by the Purchaser based on mutual discussions with the successful bidder. The additional performance security shall be valid until the completion of contract or the Purchaser may decide as.

1.36 Bid Form

- a. The Bidder shall complete the Bid Form (Format given as **Error! Reference source not found.**) furnished in the Bidding Documents and provided the same along with technical bid.
- b. All the required document duly sealed & signed should be submitted before the specified date and time at NCDFI Portal.

1.37 Place of Opening of bid : NCDFI website Portal (by Virtual Mode).

1.38 Date of Delivery:

Date of delivery prescribed shall be deemed to be the essence of the purchase order/contract. Each unit of an item shall be delivered to destination not later than the delivery date specified in the order. Delivery Schedule is given at Section VI.

1.39 Liquidated Damages:

If the bidder fails to deliver any or all the goods or perform the services within the time period(s) specified in the purchase order/contract, purchaser shall, without prejudice to its other remedies under the purchase order/contract, deduct from the purchase order/contract price, as liquidated damages, a sum equivalent to: 0.5% of the value of the delayed items/services only, for each completed week of delay

Week comprising of 7 days including holidays and any incomplete week shall be ignored for the calculation of liquidated damages.

Purchaser may without prejudice to any other method of recovery, deduct the amount of such damages from any payment in its capacity, due or which may become due to the Contractor. The payment or deduction of such damages shall not relieve the Contractor from his obligation to complete the Works, or from any other of his obligations and liabilities under the Contract.

The total amount so deducted shall not exceed 10% of the purchase order/ contract value. Once the maximum is reached, purchaser may consider cancellation/

Termination of purchase order/ contract, and forfeiture of performance ity and/or Retention amount.

1.40 Termination of contract:

- a. During the term of this contract, either party, reserves its right to terminate this contract by giving 30 (Thirty) days' notice without assigning any reason thereof.
- b. Purchaser reserves the exclusive right to suspend, cancel, and terminate this contract at any time if it has sufficient reasons to believe that the Contractor has failed to perform or observe or fulfil any of the terms and conditions herein before contained and/or liable and responsible for any loss or damage suffered by the Purchaser.
- c. The Purchaser shall have the right to ask of the removal of any person, if one is not considered to be competent and orderly in the discharge of his duties.

1.41 Termination for Convenience

- (a) The Purchaser, by notice sent to the Supplier, may terminate the Contract, in whole or in part, at any time for its convenience. The notice of termination shall specify that termination is for the Purchaser's convenience, the extent to which performance of the Supplier under the Contract is terminated, and the date upon which such termination becomes effective.
- (b) The Goods that are complete and ready for shipment within twenty-eight (28) days after the date of issuance of the termination notice, shall be accepted by the Purchaser at the Contract terms and prices. For the remaining Goods, the Purchaser may elect:

to have any portion completed and delivered at the Contract terms and prices; and/or to cancel the remainder and pay to the Supplier an agreed amount for partially completed Goods and Related Services and for materials and parts previously procured by the Supplier.

1.42 Penalty:

- a. In the event of the Contractor's failure to execute the work entrusted to him under this contract satisfactorily, Purchaser shall make alternative arrangement to do it and the difference of cost incurred by Purchaser thereby shall be recovered from the Contractor's unpaid bills and Security Deposit.
- b. If the service provided by the agency is found to be unsatisfactory, the same shall be brought to their notice in writing and if no improvement is found in a stipulated time, then a penalty up to 10% of the monthly payment value will be imposed and same shall be recovered from the monthly bill.

1.43 Force Majeure

The terms and conditions mutually agreed upon shall be subject to Force Majeure Clause. Neither party shall be considered in default in performance of their obligations here under if such performance is prevented or delayed because of war, hostilities, revolution, civil commotion, strike, epidemic, accident, fire, wind, flood, earthquake or because of law and order proclamation, regulation or ordinance of any Government or of any act of GOD or any other clause whether of

similar or dissimilar nature, beyond the reasonable control of the party affected. Should one or both the parties be prevented from fulfilling their obligations by a state of Force Majeure lasting continuously for a period of six months, the two parties should consult each other regarding the future implementation of the contract.

1.44 Taxes, duties and levies

All taxes, duties, levies etc. imposed by the Central / state

Government in connection with this contract in force at the time of submission of BIDs shall be borne by the Contractor during currency of contract. The taxes deemed to have included in the price bid, however service tax shall be payable as applicable.

1.45 Completion of contract

Unless otherwise terminated under the provisions of any other relevant clause, this contract shall be deemed to have been completed at the expiration of the duration of contract.

The performance/retention bank guarantees should be valid up to 90 days beyond the warranty period.

1.46 Insurance:

In case where the purchase order is placed on “free delivery at site” including unloading basis, no insurance premium will be paid by purchaser. In such a case, all required insurance policies (Transit risk insurance policy, storage insurance policy, All risk policy, Workmen Compensation policy, Third Party insurance etc.) may be obtained by the supplier/ contractor to safeguard their own interests and to protect the material against transit hazards, storage (at Site) for damage/ loss.

1.47 Rejection:

Purchaser reserves the right to reject the goods either in full or in part, if at the time of delivery, it is noticed that the goods supplied do not conform to the specifications/ description given in the purchase order. The rejections, if any, will be intimated to the supplier in writing within a reasonable time. The supplier will be liable and responsible to repair/ replace the rejected goods within the original delivery period. No extra payment shall be made for such replacement to the supplier/ contractor for freight, unloading and insurance etc. Till the repair/ replacement is made, the rejected goods shall be lying at supplier’s risk, cost and responsibility. If the supplier does not arrange to repair/ replace the rejected goods within the original delivery period, purchaser may dispose off such goods at supplier’s risk and in the manner, purchaser thinks fit. Purchaser shall be at liberty to purchase the quantity of items rejected from other parties without giving any notice and at supplier’s risk & cost and recover the additional expenditure, if any, from any of the outstanding dues of the supplier/ contractor. Purchaser shall be entitled to recover the expenses made by Purchaser on storage and handling of such rejected goods till the goods are removed from Purchaser’s premises/ stores.

Variation:

- A. The Purchaser can make any variation of the form, quality or quantity of the Works or any part thereof that may, in his opinion, be necessary

and for that purpose, or if for any other reason it shall, in his opinion be desirable, he shall have power to order the Supplier to do and the Supplier shall do any of the following:

- a. Increase or decrease the quantity of any work included in the contract,
 - b. Omit any such work,
 - c. Change the character or quality or kind of any such work,
 - d. Change the levels, lines, position and dimensions of any part of the works, and
 - e. Execute additional work of any kind necessary for the completion of the works and no such variation shall in any way vitiate or invalidate the contract, but the value, if any, of all such variations shall be taken into account in ascertaining the amount of the Contract price.
- (b) All extra or additional work done or work omitted by order of the Purchaser shall be valued at the rates and prices set out in the contract if in the opinion of the Purchaser, the same shall be applicable. If the contract does not contain any rates or prices applicable to the extra or additional work, then suitable rates or prices shall be agreed upon between the Purchaser and the Supplier, with consideration of Overhead & Profit limiting to 15% . In the event of disagreement, the Purchaser shall fix such rates or prices as shall, in his opinion, be reasonable and proper.

1.48 Sub-Contract:

In the event of awarding sub-contract to any party/parties by the supplier/ contractor for the manufacture/supply/erection of any parts/spares/components that will be used in ordered equipment, the supplier/ contractor must furnish the details about their sub-contract also. The responsibility regarding quality, quantity, guarantee/warranty of the materials supplied by the sub-contractors' rests on the supplier/ contractor.

1.49 Spares :

If asked for, the supplier shall provide a list of spare parts, which will be required for the plants and equipment supplied for at least two years of normal operation with the names and the addresses of the manufacturers from whom these can be procured. The list should contain the code numbers of the parts, which are required to be procured, in addition to the machine number, models etc.

1.50 Inspection:

On placement of order, the equipment under the purview of supply should be inspected by the supplier's own technical experts at the supplier's works and such inspection report should be forwarded to

Purchaser in triplicate. However, Purchaser reserves its right to inspect at any stage of fabrication/manufacture of the equipment/material. The supplier should intimate the Purchaser without fail, when the equipment is ready for inspection including the stage wise inspection. The supplier should not proceed with further manufacture and/or despatch of equipment, without obtaining a clearance certificate from Purchaser. The supplier should forward to Purchaser the Test Certificates, wherever applicable, obtained from concerned authorities/ principal manufacturers either regarding quality or any other details of the items utilised in the process of manufacture/fabrication

1.51 Dispatch Instructions:

The materials are to be despatched to the destination by the mode of transport specified in order under intimation to Purchaser . Depending on the type of material, the supplier shall have to carry out proper packing/ crating to avoid breakages in transit. Other details of despatch such as consignee's particulars etc. are mentioned in the purchase order. For using any mode of transport other than the specified one, prior concurrence from Purchaser in writing should be obtained. All consignments should be despatched on freight paid basis irrespective of price basis. In the event of freight payable extra by Purchaser , the supplier shall have to obtain Purchaser 's-- prior approval and produce necessary documentary evidence in support of claims. Unless otherwise stated, the original RR/LR should be sent directly to the consignee along with three copies of invoice and two copies of Delivery Challan/e-way bills and Packing List.

1.52 Force Majeure:

The terms and conditions mutually agreed upon shall be subject to Force Majeure Clause. Neither the supplier/ contractor nor Purchaser shall be considered in default in performance of his/their obligations hereunder if such performance is prevented or delayed because of war, hostilities, revolution, civil commotion, strike, epidemic, accident, fire, wind, flood, earthquake or because of any law, order, proclamation, regulation or ordinance of any Government or of any act of God or any other cause whether of similar or dissimilar nature, beyond the reasonable control of the party affected. Should one or both the parties be prevented from fulfilling his/their contractual obligations by a state at Force Majeure lasting continuously for a period of six months, the two parties should consult each other regarding the future implementation of the contract/purchase order.

1.53 Arbitration

- a. Except as otherwise provided elsewhere in the contract, if any dispute, difference, question or disagreement or matter whatsoever, shall, before and after completion or abandonment of work or during extended period, hereafter arises between the parties, as to the meaning, operation or effect of the contract or out or relating to the contract or breach thereof, shall be referred to Sole Arbitrator to be appointed by NDDB Dairy Services/Purchaser at the time of

dispute.

- b. It is a term of the contract that the party invoking arbitration shall specify all disputes to be referred to arbitration at the time of invocation of arbitration under the clause.
- c. It is a term of the contract that the cost of arbitration will be borne by both the parties.
- d. The venue of the arbitration shall be Delhi/Decided by the Purchaser.
- e. Settlement of any disputes arising out of this agreement will be subject to Delhi/ Decided by the Purchaser Jurisdiction only. The resolution of dispute, if any, shall be settled initially, by way of mutual consultation and if it is not settled the same shall be referred to arbitrator. The sole arbitrator will be appointed by NDDDB Diary Services under his discretion and the arbitration proceedings shall be governed by the provisions of the Indian Arbitration and Conciliation Act 1996 and thereafter amendments issued from time to time. The award of such sole arbitrator shall be final, conclusive and binding on the parties to this contract.

1.54 Jurisdiction

The contract shall be governed by and constructed according to the law in force in India. The venue of the arbitration shall be at Delhi.

1.55 Negligence or default of contractor:

- a. Purchaser may without prejudice to its other rights or remedy against the contractor in respect of inferior workmanship or any other provision of this contract or otherwise may issue a Notice in writing to absolutely determine the contract for the following cases:
- b. If the contractor neglects to carry out his obligation under the contract and / or commits defaults in complying with any of the terms and conditions and does not remedy even after written notice.
- c. When the contractor has been made liable for action under the aforesaid cases, Purchaser shall have powers:-
- d. To determine or rescind the contract. Upon such rescission, the full security deposit recoverable under the contract shall be liable to be forfeited and shall be absolutely at the disposal of Purchaser.

After giving notice to the contractor to measure up the work done by him in order to get the balance work done by another contractor.

Statuary Compliances

All interior electrical works shall be executed as per approved drawings and specifications.

- All materials used shall conform to relevant IS standards and approved makes.
- The contractor shall comply with all applicable statutory regulations, including the Indian Electricity Act and CEA regulations.
- All work shall adhere to local electrical inspectorate norms and obtain necessary approvals, wherever required.
- The contractor shall ensure compliance with labour laws, ESI, PF, and other applicable statutory provisions.
- Necessary safety measures shall be followed as per statutory guidelines.
- Proper earthing and protection systems shall be provided as per standards.
- All installations shall be tested and certified before handing over.
- Any statutory fees, permissions, or penalties (if applicable) shall be borne by the contractor.
- Defects during the defect liability period shall be rectified at no extra cost.

Technical Specifications
Interior Work

Sl No	DESCRIPTION/SPECIFICATION	Unit	QTY
A	MODULAR FURNITURE		
	HOSTEL BUILDING 2 BLOCKS		
1	<p>Supplying and Fixing of Bed with the following specification:- BETA (HOSTEL ROOM BED) 2060L X 900D X400- 750H Cot with Metal Storage. Overall size of the Cot – 2060L x 900D x 750mm H (Bed height w/o mattress comes to about 400mm) The cot design is simple, modular & minimalist design, quick & easy to assemble, weldless technology, stable & sturdy to take adequate weight. Verticals are from Sq.40x40x1.60mm thk (16g) and horizontal beams are Rectangular tubular profiles of 60x40 confirming to IS 4923:2017. All 04 vertical sections/legs are connected to to form the under-structure, confirming to IS 4923:2017 grade. Beam to beam are connected by cross beams of Sq.20mm ERW tube confirming to IS 4923:2017, which supports the mattress platform. Mattress platform is of 12mm thk plywood sheet. All metal parts comes with powder coating finish 60-80 microns thk. The legs are fitted with PPGF moulded leg bushes & levellers to adjust heights upto 20mm based on ground undulations.</p>	Nos	64.00

2	Storage Cum Luggage Rack (Hostel Room) - Providing and fixing low hieght storage cabinets of size 1.05 mtr x 0.75 mtr) and Depth as per size available at site along the walls/partitions, as per interior drawings, using 12 mm BWP ply board for carcase, shutters, vertical and horizontal partitions, 6mm ply for the back and 1mm High Gloss laminate of approved shade on vertical and horizontal visible surfaces. The shutters shall be overlapped on the carcase and shall be provided with Hettich/Haffe Hydraulic hinges. The width of the shutter shall site conditions. All the exposed edges of the board shall be provided with wooden lipping/ PVC Tepping 19mm x 3mm, duly PU polished/PU polish in desired shade. The inner surface shall be provided with 0.8mm thick laminate of desired shade, design and gloss. The cabinet shall be complete with handles, knobs, locks and magnet catchers, Hnger pipes etc as directed to the satisfaction of the Architect/Engineer.	Nos	64.00
3	Supplying and Fixing of TABLE with the following specification:- HOSTEL TABLE 800L X 525D X750H Specification : Table top is 25mm thk PLB Understructure in Sq 25 tube with powder coating finish 200*800 Modesty	Nos	74.00
4	Supplying and Fixing of Chair with the following specification:- Tang : Multipurpose Chair(Hostel Room Chair) Single Mould Polyproplene Stackable Chair 3.9kg sturdy chair	Nos	64.00

5	<p>Supplying and Fixing of Double Bed with the following specification:- DOUBLE BED-TEACHER'S 2030L X 1575D X 415 /750H The head rest, foot rest & bed side panels are from 25mm thk, E1 grade, particle board prelaminated on two sides, with rounded corners. The storage - drawer units and center panels are of 18mm thk prelam particle board. Height of head rest panel is 750mm and of foot rest is 450mm. The inner structure of the cot has a metal tubular frame work, Tubes are confirming to IS 4923:1997, it is in-addition to center panels of prelaminated particle board. Mattress base or platform is of 18mm thk prelam particle board in white laminate finish.</p> <p>The design offers a knockdown Construction, easy to assemble, strong and robust product. All metal parts comes with powder coating finish of 60-80 microns thick. All hardware are of steel, comes with zinc blue / yellow / black passivation.</p>	Nos	8.00
---	---	-----	------

6	<p>Supplying and Fixing of Queen Bed with the following specification:- QUEEN SIZE BED-CARE TAKER The head rest, foot rest & bed side panels are from 25mm thk, E1 grade, particle board prelaminated on two sides, with rounded corners. Height of head rest panel is 750mm and of foot rest is 450mm. The inner structure of the cot has a metal tubular frame work, Tubes are confirming to IS 4923:1997, it is in-addition to center panels of prelaminated particle board. The foot rest & head rest panels comes with adjustable levellers. Mattress base or platform is of 18mm thk prelam particle board in white laminate finish.</p> <p>The design offers a knockdown Construction, easy to assemble, strong and robust product. All metal parts comes with powder coating finish of 60-80 microns thick. All hardware are of steel, comes with zinc blue / yellow / black passivation.</p>	Nos	2.00
7	<p>Supplying and Fixing of Wardrobe with the following specification:- WARDROBE-4(TEACHER'S ROOM & CARE TAKER CUPBOARD) 900L X 450D X1830H Hostel Wardrobe with Mirror Body : Complete body made of 18 MM Thick particle board with 2 MM PVC Edge band. Shelf: Made of 18 MM Thick particle board with 2 MM PVC Edge band Drawer: Mounted on Full panel Drawer Slide With Lock and recessed handle Hanger Rod Included Construction: Storage will be of knockdown construction</p>	Nos	10.00

8	<p>Supplying and Fixing of Chair with the following specification:- ALPHA MBG FXD ARMS - Black (CARE TAKER ROOM) * Alpha Medium (Black) Back Mesh Chair * AN 70 Mesh * Fabric Upholstered Cushion Seat * Centre Tilt Mechanism * Fixed Arms * Gaslift * Nylon Base * 50mm Castors</p>	Nos	6.00
9	<p>Supplying and Fixing of Side Storage with the following specification:- SIDE STORAGE (TEACHER'S ROOM STORAGE) 450L X 450D X510H BED SIDE STORAGE Configuration - 1 Drawer on Top + Open shelf below Body - made up of 18MM Thk Prelaminated Particle Board with 2 MM PVC Edge banding Drawer - With full panel drawer slides and Finger groove handle with cam Lock Finish - As per Approved Shade</p>	Nos	8.00

10	<p>Supplying and Fixing of TABLE with the following specification:- VMT-1275 - MAIN TABLE (CARE TAKER ROOM)</p> <p>Table Top- Made of 25mm thick prelaminated particle board of approved shade confirming to E1 norms. All the edges of workstation surface shall be provided with machine pressed 2mm thick imported PVC lipping glued with hotmelt Eva glue free from any VOC.</p> <p>Gable End And Modesty - Made of 18mm thick prelaminated particle board of approved shade confirming to E1 norms. All the edges of workstation surface shall be provided with machine pressed 2mm thick imported PVC lipping glued with hotmelt Eva glue free from any VOC.</p>	Nos	2.00
11	<p>Supplying and Fixing of Chair with the following specification:- ALPHA VA PC 4 LEGS -PP Grey(Teacher's Hostel Room Chair)</p> <p>*Alpha Medium PP (Grey)Back Mesh Chair</p> <p>* AN 75 Mesh</p> <p>* Fabric Upholstered Cushion Seat</p> <p>* Fixed Arms</p> <p>* Powdercoated 4 Legs</p> <p>* with PU castors</p>	Nos	8.00

12	<p>Supplying and Fixing of 2 Seater Tandem with the following specification:-</p> <p>HOSTEL BUILDING (TV Room) Forum 2 Seater Tandem * With Cushion Seat * With Mesh Back * With Fixed Arms</p> <p>Beam & Legs are from uniquely designed powder coated MS tubes , the foot are from high pressure diecast aluminium material comes with height adjustable levellers to take care even if there is a floor undulation upto 8-10mm. The Feet, Leg & Beam comes in flat pack, knock down condition and are fixed using zinc passivated best grade hardware. Seat & back are integrated & each seat comes with handle / Arm rests. Seat is a moulded foam, upholstered with fabric and back is high quality mesh provides ample air circulation. The product offers the best ergonomic seating & comfortable back rest.</p> <p>All Metal & aluminium parts comes with powder coating finish of 60-80 micron thk.</p>	Nos	4.00
----	---	-----	------

13	<p>Supplying and Fixing of 3 Seater Tandem with the following specification:- HOSTEL BUILDING (Lobby) Forum 3 Seater Tandem * With Cushion Seat * With Mesh Back * With Fixed Arms Beam & Legs are from uniquely designed powder coated MS tubes , the foot are from high pressure diecast aluminium material comes with height adjustable levellers to take care even if there is a floor undulation upto 8-10mm. The Feet, Leg & Beam comes in flat pack, knock down condition and are fixed using zinc passivated best grade hardware. Seat & back are integrated & each seat comes with handle / Arm rests. Seat is a moulded foam, upholstered with fabric and back is high quality mesh provides ample air circulation. The product offers the best ergonomic seating & comfortable back rest. All Metal & aluminium parts comes with powder coating finish of 60-80 micron thk.</p>	Nos	4.00
----	---	-----	------

14	<p>Supplying and Fixing of 4 Seater Tandem with the following specification:- HOSTEL BUILDING (TV Room) Forum 4 Seater Tandem * With Cushion Seat * With Mesh Back * With Fixed Arms Beam & Legs are from uniquely designed powder coated MS tubes, the foot are from high pressure diecast aluminium material comes with height adjustable levellers to take care even if there is a floor undulation upto 8-10mm. The Feet, Leg & Beam comes in flat pack, knock down condition and are fixed using zinc passivated best grade hardware. Seat & back are integrated & each seat comes with handle / Arm rests. Seat is a moulded foam, upholstered with fabric and back is high quality mesh provides ample air circulation. The product offers the best ergonomic seating & comfortable back rest.</p> <p>All Metal & aluminium parts comes with powder coating finish of 60-80 micron thk.</p>	Nos	4.00
15	<p>Supplying and Fixing of Centre Table with the following specification:- CORNER TABLE-SQUARE SHAPE (TV Room & Lobby) 600WX600DX 450H Table top : For Office / meeting tables - 25mm thk prelaminated particle board with 2mm edge banding finish Understructure: supported on MS powdercoated leg .</p>	Nos	18.00

16	<p>Supplying and Fixing of Centre Table with the following specification:- CENTRE TABLE-RECTANGLE SHAPE (TV Room & Lobby) 1050WX600DX 550H Table top : For Office / meeting tables - 25mm thk prelaminated particle board with 2mm edge banding finish Understructure: supported on MS powdercoated leg .</p>	Nos	4.00
17	<p>Supplying and Fixing of Cupboards with the following specification:- CUPBOARDS (STORE ROOM) KD-036 Swing glass doors with four shelves, 5 levels of box files W 900 x D 400 x H 1850 Material thickness: 0.8mm High quality cold rolled steel plate 3. Surface:Powder coating 4. KD structure 5.Packing: 5 layers carton</p>	Nos	4.00
18	Supplying following HOSTEL ACCESSORIES:		
a	Bucket & Tumbler set (Cello)	Set	30.00
b	Plastic stool (Cello)	Nos	30.00
c	Cotton Bath towel (400 GSM)	Nos	100.00
d	Recron Pillow (16X24 inch)	Nos	150.00
e	Recron Pillow cover (16X24 inch)	Nos	150.00
f	Quilt (Single Bed)	Nos	100.00
g	Quilt cover (Single Bed)	Nos	125.00
h	Quilt (Double Bed)	Nos	20.00
i	Quilt cover (Double Bed)	Nos	20.00
j	Bed Sheet (Single bed)	Nos	20.00
k	Bed Sheet (Double bed)	Nos	20.00
l	Memory Foam Mattress Mattresses (Single bed)	Nos	64.00

m	Memory Foam Mattress Mattresses (Double bed)	Nos	10.00
n	Blanket (Single bed-double layer)	Nos	150.00
l	Blanket (Double Bed-double layer)	Nos	20.00
m	Blanket cover (Single bed)	Nos	20.00
n	Blanket cover (Double bed)	Nos	80.00
o	Soap-125 gms of reputed brand	Nos	64.00
p	Shampoo pouch-5 ml of reputed brand	Nos	10.00
q	Hair oil pouch - 5 ml of reputed brand	Nos	100.00
	Dining Area		
19	Supplying and Fixing of Dining Table with the following specification:- GRANITE TOP CAFÉ TABLE (DINING TABLE) DIMENSIONS : 1800L x 900D x 750H. Table top : For Cafeterias - 18mm Thick GRANITE Table top. Support: End Legs: SS 304 LEGS AND understructure. Basic rate of Granite = Rs. 1800 per Sqmt	Nos	12.00
20	Supplying and Fixing of Dining Chair with the following specification:- Tang : Café Chair (DINING CHAIR) Single Mould Polypropylene Stackable Chair 3.9kg sturdy chair	Nos	72.00
	Watchmen Cabin		

21	<p>Supplying and Fixing of Bed with the following specification:- BETA (Watchmen Cabin) 2060L X 900D X400- 750H Cot with Metal Storage. Overall size of the Cot – 2060L x 900D x 750mm H (Bed height w/o mattress comes to about 400mm) The cot design is simple, modular & minimalist design, quick & easy to assemble, weldless technology, stable & sturdy to take adequate weight. Verticals are from Sq.40x40x1.60mm thk (16g) and horizontal beams are Rectangular tubular profiles of 60x40 confirming to IS 4923:2017. All 04 vertical sections/legs are connected to to form the under-structure, confirming to IS 4923:2017 grade. Beam to beam are connected by cross beams of Sq.20mm ERW tube confirming to IS 4923:2017, which supports the mattress platform. Mattress platform is of 12mm thk plywood sheet. All metal parts comes with powder coating finish 60-80 microns thk. The legs are fitted with PPGF moulded leg bushes & levellers to adjust heights upto 20mm based on ground undulations.</p>	Nos	1.00
----	--	-----	------

22	<p>Supplying and Fixing of Wardrobe with the following specification:- WARDROBE-1 (WATCHMEN CUPBOARD) 900L X 450D X1830H WARDROBE :</p> <p>Body : Complete body made of 18 MM Thick particle board with 2 MM PVC Edge band. Door: Made of 18 MM Thick particle board with 2 MM PVC Edge band with D type Handle Drawer: Mounted on Full panel Drawer Slide With Lock and reverse waterfall handle Hanger Rod Included Construction: Storage will be of knockdown construction</p>	Nos	1.00
----	---	-----	------

23	<p>Supplying and Fixing of Main Table with the following specification:- VMT-1275 - MAIN TABLE (WATCHMEN TABLE) Table Top- Made of 25mm thick prelaminated particle board of approved shade confirming to E1 norms. All the edges of workstation surface shall be provided with machine pressed 2mm thick imported PVC lipping glued with hotmelt Eva glue free from any VOC. Gable End And Modesty - Made of 18mm thick prelaminated particle board of approved shade confirming to E1 norms. All the edges of workstation surface shall be provided with machine pressed 2mm thick imported PVC lipping glued with hotmelt Eva glue free from any VOC. Prelam Pedestal- Pedestals enhance the storage space for documents and other materials with built in security arrangement. They are placed at the convenience of the user subject to availability of space. There are standard design for these Pedestals based on its utility and functionality. Pedestals: The pedestals are made of 18mm PLB. The drawers are made metal sides- called "Meta Box"- powder coated in Ivory finish. The "Meta Box" comes in 3 sizes- 55, 75 and 110 mm. The "Meta Box" slides on a channel with nylon rollers. The drawer bottoms and back are made of 12mm PLB. All the exposed portions have 1mm thick PVC edge band. Provided with locks- multi lock which can lock all the fascias together. Keys are provided in duplicate.</p>	Nos	1.00
24	<p>Supplying and Fixing of Chair with the following specification:- ALPHA MBG FXD ARMS - Black (Watchmen Cabin) * Alpha Medium (Black) Back Mesh Chair * AN 70 Mesh * Fabric Upholstered Cushion Seat * Centre Tilt Mechanism * Fixed Arms * Gaslift * Nylon Base * 50mm Castors</p>	Nos	1.00
Ground Floor AI Training Room			

25	<p>Supplying and Fixing of 3 Seater Tandem with the following specification:-</p> <p>RECEPTION AREA Forum 2 Seater Tandem * With Cushion Seat * With Mesh Back * With Fixed Arms</p> <p>Beam & Legs are from uniquely designed powder coated MS tubes , the foot are from high pressure diecast aluminium material comes with height adjustable levellers to take care even if there is a floor undulation upto 8-10mm. The Feet, Leg & Beam comes in flat pack, knock down condition and are fixed using zinc passivated best grade hardware. Seat & back are integrated & each seat comes with handle / Arm rests. Seat is a moulded foam, upholstered with fabric and back is high quality mesh provides ample air circulation. The product offers the best ergonomic seating & comfortable back rest.</p> <p>All Metal & aluminium parts comes with powder coating finish of 60-80 micron thk.</p>	Nos	2.00
26	<p>Supplying and Fixing of Side Table with the following specification:-</p> <p>GLAMOUR (RECEPTION SIDE TABLE) METAL LEGS 900DiaX550H</p>	Nos	2.00

27	<p>Providing and supply Reception Table. Top made of 25 mm thick Prelam MDF IS 12406 with 0.8mm thick PVC edge bidding finish. Side made of 18 mm thick Prelam MDF IS 12406 with 0.8mm thick PVC edge bidding finish. 18 mm thick Prelam MDF IS 12406 for Modesty Panel with 0.8mm thick PVC edge bidding finish. MDu - 3 drawer made of 18 mm thick Prelam MDF IS 12406 with 0.8mm PVC edge bidding finish. Drawer run on Telescopic Channel with lock and handle etc. All necessary hardware included.</p>	Nos	1.00
28	<p>Training room chair for Class room 1 & 2 VIT-1002 - Providing and supply The chair pipe structure of MS CRCA finish 16 gauge capsule pipe having a diameter of 32 mm, the cantilever tubular structure with stability for proper balance, the seat is supported on spring structure, the seat dimensioned and curved from an ergonomics point of view, the frame and spring-seat structure prepared from MIG welding process & powder coated, proper high-density rubber bush provided at all four legs, seat upholstered with fabric. Perforated Polypropylene Backrest. Injection moulded plastic for back increases rigidity and flexibility for the user. Product is tested as per stringent BIFMA standards of performance.</p>	Nos	80.00

29	<p>Teaching material & AV room 2 rooms Providing and supply The chair pipe structure of MS CRCA finish 16 gauge round pipe having a diameter of 32 mm, the understructure frame tubular structure with stability for proper balance, the seat and back is supported on spring structure, the backrest armrest and seat dimensioned and curved from an ergonomics point of view, the frame and spring-seat structure prepared from MIG welding process & powder coated, proper high-density rubber bush provided at all four legs, seat & back upholstered with fabric.</p>	Nos	40.00
----	---	-----	-------

30	<p>Supplying and Fixing of Table with the following specification:- TEACHER'S Table -PERFORM (CLASS ROOM, TEACHING ROOM, AUDITORIUM) 1500L x 600D x 750H Table; Made of 25mm thick prelaminated particle board of approved shade confirming to E1 norms. All the edges of workstation surface shall be provided with machine pressed 2mm thick PVC lipping. Leg: The Leg is constructed by 50Sq-16g ERW tube acts as vertical member & Rect.50x25-16g ERW tube which acts as horizontal member. Rectangle tube which is a horizontal member of the leg is attached with two verticals on either ends by MIG welding. MIG (Co2) welding is done on inner faces of the tubes to take care of aesthetics of leg. Leg shoe is made from Acrylonitrile butadiene styrene which is insert moulded with zinc blue plated M10 – nuts for additional stiffness. The levellers can be adjusted from 0-25mm height provided with leveling bolts / screws to take care of undulations in the floor level. Beams; Legs are connected using cross beams made of 40 x 20 16 gauge rectangular tube and connected to legs with aluminium die cast wing connectors tight fit to leg beam allotted with 4 holes.</p>	Nos	8.00
31	<p>Supplying and Fixing of Chair with the following specification:- ALPHA MBG FXD ARMS - Black (RECEPTION CHAIR, Class room, Teaching room, Computer lab) * Alpha Medium (Black) Back Mesh Chair * AN 70 Mesh * Fabric Upholstered Cushion Seat * Centre Tilt Mechanism * Fixed Arms * Gaslift * Nylon Base * 50mm Castors</p>	Nos	12.00

32	<p>Supplying and Fixing of Table with partition with the following specification:- FACULTY'S ROOM Specifications - Partition system Dimensions : 1200mmL x 600mmD x 750mmHT Table top & 1200mmHt Partition Partition: Height - 1200mm frame with top and sides in Aluminium trims and junctions with diecast caps. Table Top: 25mm thick Pre laminate particle board with 2mm PVC edge lipping on all exposed edges Support: 18mm thick pre laminated gable ends. Wiremanagement : 65mm Grommet cap on table & One metal raceway tile to mount switches below table top level for power and skirting tile for data. Tile Finishes : Above table top Level: Fabric Tiles, one glass marker tile & one magnetic tile per workstation. Below table Top level: Pre-Laminated tiles and metal skirting tile on Main spine towards user.</p>	Nos	6.00
33	<p>Supplying and Fixing of Chair with the following specification:- ALPHA MBG FXD ARMS - Black (FACULTY'S ROOM CHAIR) * Alpha Medium (Black) Back Mesh Chair * AN 70 Mesh * Fabric Upholstered Cushion Seat * Centre Tilt Mechanism * Fixed Arms * Gaslift * Nylon Base * 50mm Castors</p>	Nos	12.00

34	<p>Supplying and Fixing of 2 Seater Tandem with the following specification:- FACULTY'S ROOM Forum 2 Seater Tandem * With Cushion Seat * With Mesh Back * With Fixed Arms Beam & Legs are from uniquely designed powder coated MS tubes , the foot are from high pressure diecast aluminium material comes with height adjustable levellers to take care even if there is a floor undulation upto 8-10mm. The Feet, Leg & Beam comes in flat pack, knock down condition and are fixed using zinc passivated best grade hardware. Seat & back are integrated & each seat comes with handle / Arm rests. Seat is a moulded foam, upholstered with fabric and back is high quality mesh provides ample air circulation. The product offers the best ergonomic seating & comfortable back rest.</p> <p>All Metal & aluminium parts comes with powder coating finish of 60-80 micron thk.</p>	Nos	1.00
35	<p>Supplying and Fixing of Table with the following specification:- LOW TABLE -PERFORM (FACULTY'S ROOM TABLE) 1800L x 800D x 750H PERFORM - METAL STRAIGHT LEGS Table Top: 25mm thick Pre laminate particle board with 2mm PVC edge lipping on all exposed edges Understructure: supported on MS powdercoated Straight leg with MS support beam</p>	Nos	1.00

36	<p>LOW HT. STORAGE (Faculty Room) Providing and fixing low hieght storage cabinets of size 1.05 mtr x 0.75 mtr) and Depth as per size available at site along the walls/partitions, as per interior drawings, using 12 mm BWP ply board for carcase, shutters, vertical and horizontal partitions, 6mm ply for the back and 1mm High Gloss laminate of approved shade on vertical and horizontal visible surfaces. The shutters shall be overlapped on the carcase and shall be provided with Hettich/Haffele Hydraulic hinges. The width of the shutter shall site conditions. All the exposed edges of the board shall be provided with wooden lipping/ PVC Tepping 19mm x 3mm, duly PU polished/PU polish in desired shade. The inner surface shall be provided with 0.8mm thick laminate of desired shade, design and gloss. The cabinet shall be complete with handles, knobs, locks and magnet catchers, Hnger pipes etc as directed to the satisfaction of the Architect/Engineer.</p>	Nos	3.00
----	---	-----	------

37	<p>Supplying and Fixing of Auditorium chairs with the following specification:- CLICK AUDI Technical specifications- Auditorium chairs. AUDITORIUM CHAIRS: (Click). Seat and back assembly: The Frame is made out of 75x6mm thickness mild steel Flat is Confirming to IS – 2062. Seat & Back is made by 12mm Molded Hot Pressed Plywood in Ergonomic Shape. Seat is assembled to the tubular clamp fixed to the frame for tilting operation. The Frame is welded by Co2 welding process for Uniform finish and high Tensile Strength wire 0.8mm IS:0419-SL. Seat Size- 500 (W) x 520(D) mm. Back size – 620(W) x470(H) mm. Seat height from the Floor- 455 mm. Over all Height from the floor - 925 mm. Seat : Size - 490 (W) x 475(D) mm. Back size – 475 mm (W) x 470 (H) mm from seat. Seat height from the Floor will be- 455 mm. Over all Height from the floor will be - 925 mm. The seat profile shall be developed to help the user to get necessary comfort in popliteal region and ease of use in forward push for seat sliding feature. Upholstery: Seat & Back will be upholstered with fabric. Fabric shall be no flaming or progressive shouldering within one hour of placement of the cigarettes. Fire rated fabric confirming to BS EN 1021-1.</p>	Nos	140.00
----	---	-----	--------

The fabric will be Heavy duty- 340 GSM grade, 100 % polyester dyed yarn with 3 mm \pm 0.5 mm foam backing. The fabric should be FMVSS 302 STANDARD & Water repellent. Spacing: The spacing from back to back shall be 1000 mm. The distance from seat to back of the front row should be 262 mm. The foam shall be Flexible PU FOAM: Automotive Grade High Resilience-HR Polyurethane foam of density: 50 \pm 2 kg / M3. As per JIS K 6401 and IS:7888 for 25% compression.

The foam must be Fire Retardant. Thickness Cushion: 130 \pm 20 mm; Backrest: 80 \pm 10 mm. Hardness : Seat cushion : 120 \pm 10 Newton; Backrest : 80 \pm 10 Newton.

Powder coating : Frame is powder coated to provide an attractive finish. Coating thickness of 40 to 60 microns is maintained. Powder coated products are durable & reduce the risk of scratches, chipping, abrasions, corrosion, fading and other wear issues. The powder coating process should undergo 7 step rust resistance pre treatment process viz degreasing, pickling as per IS standard. After pre treatment process, the components should be NANO coated and passified for better adhesion of paint as per IS 3618 - 1996. The pacified components should be powder coated with epoxy polyester powder to the thickness of 50-60 microns as per IS 101 and oven baked at 180 degrees for getting the scratch resistance finish. Product should have undergone the following testing process for durability and functionality, cross cut test for ensuring adhesion of power coating as per IS standard, Salt spray test for ensuring the rust resistance pre treatment process as per IS standard.

Arms : Arms are made of Rubber wood with Melamine Finish to Size: 50x 295x 25mm.

Fasteners : High Quality Metal Screws confirming to IS 2269 Hardness HRC 30 to 34.

Side Panel/Aisle Panel: - 460 (H)x 340(W) mm. Two side panel frames made of 3 mm thick CR steel.

Each Side panel is fitted with two upholstered plywood of 12mm thick. The base plate is grouted to the floor using foundation expansion bolts.

Grouting: The grouting plate shall be in HR- size - L- 240mm, W-100mm, T- 10 mm, 14 mm diameter 4 holes for mounting purpose. Frame is mounted to the floor with 10 mm base plate. The grouting will be done with special adhesive- DOBEFIL 60 Insulating resin with expansion bolts.

38	Supplying and Fixing of Chair with the following specification:- ALPHA VA PC 4 LEGS -PP Black (AUDITORIUM STAGE) *Alpha Medium PP Back Mesh Chair * AN 70 Mesh * Fabric Upholstered Cushion Seat * Fixed Arms * Powdercoated 4 Legs * with PU castors	Nos	6.00
39	Supplying and Fixing of Side Table with the following specification:- GLAMOUR (AUDITORIUM STAGE) METAL LEGS 900DiaX550H	Nos	2.00

40	<p>Supplying and Fixing of Table with the following specification:- (AUDITORIUM STAGE) 1500L x 600D x 750H Table; Made of 25mm thick prelaminated particle board of approved shade confirming to E1 norms. All the edges of workstation surface shall be provided with machine pressed 2mm thick PVC lipping. Leg: The Leg is constructed by 50Sq-16g ERW tube acts as vertical member & Rect.50x25-16g ERW tube which acts as horizontal member. Rectangle tube which is a horizontal member of the leg is attached with two verticals on either ends by MIG welding. MIG (Co2) welding is done on inner faces of the tubes to take care of aesthetics of leg. Leg shoe is made from Acrylonitrile butadiene styrene which is insert moulded with zinc blue plated M10 – nuts for additional stiffness. The levellers can be adjusted from 0-25mm height provided with leveling bolts / screws to take care of undulations in the floor level. Beams; Legs are connected using cross beams made of 40 x 20 16 gauge rectangular tube and connected to legs with aluminium die cast wing connectors tight fit to leg beam allotted with 4 holes.</p>	Nos	2.00
41	<p>Podium (AUDITORIUM STAGE):- Providing and supply work Table with MDU Top 25 /18 mm thick Prelam MDF Board with 2 mm thick PVC edge bidding finish. Leg & Apron 18 mm thick Prelam MDF Board with 2 mm thick PVC edge bidding. Side Table : Top and leg 25 mm thick Prelam MDF Board with 2 mm thick PVC edge bidding finish. Drawer & shutter 18mm thick Prelam MDF Board with 2 mm thick PVC edge bidding finish with lock and nessary hardware.</p>	Nos	1.00

42	<p>Supplying and Fixing of Conference room table with the following specification:- CONFERENCE ROOM Dimensions : 5250mmL x 1200mmD x 750mmHT Table Top: 25mm thick Pre laminate particle board with 2mm PVC edge lipping on all exposed edges Support: End Legs: 25mm Thick Pre Laminate Particle board Gable End Legs with connected Beam and Modesty for the Stability. Intermediate Legs: MS podwer coated 60X40mm legs and supporting MS cross beams (40X20mm) Wire Management: 450mm Aluminium flipup with soft closure and provision to mount switches and sockets on Cable tray & Intermediate leg with wire entry / vertical wire entry cover considered. (Length shall be considered as per drawing.)</p>	Nos	1.00
43	<p>Supplying and Fixing of Conference room chairs with the following specification:- LIBERATE MB ML ADJ ARMS - Leatherette Seat & Back(CONFERENCE ROOM CHAIR) * Liberate Medium Back * Leatherette Seat & Back * Multilock Mechanism * One Way Adjustable Arms (Height) * Gaslift * Nylon Base * 60mm Nylon Castors</p>	Nos	20.00

44	<p>Supplying and Fixing of Conference room main chairs with the following specification:- LIBERATE HB ML ADJ ARMS - Leatherette Seat & Back (CONFERENCE ROOM MAIN CHAIR) * Liberate Medium Back * Leatherette Seat & Back * Adjustable Headrest * Multilock Mechanism * One Way Adjustable Arms (Height) * Gaslift * Nylon Base * 60mm Nylon Castors</p>	Nos	2.00
45	<p>Supplying and Fixing of Library Table with the following specification:- LIBRARY GLIDE - RECTA 1200L X 450D X 750H The table top is in Rectangular shape & it is from 25mm thk E1 prelam particle board with 2mm PVC edge banding. This table comes in multiple depths of 400, 450 & 500mm. Uniqueness of this table is that, Two legs comes with Castors and Two leg with leg bush fitted with adjustable levellers. This unique design makes the table very handy, light and easy to lift up one end & move wherever you can. Each Leg is from Round MS Tube structure of size 44.40 x 1.60mm thk (16g) confirming to IS 4923 : 1997, fixed with high pressure aluminum die cast connector at the top, which is from ADC-12 material confirming to ASTM E 1251-2011, IS 7658-1990 & IS 11035 - 1190. For chemical composition and IS 1608 - 2005 for UTS & Ys.. All 04 legs are fixed with these diecast connectors and the connector to connector are joined by the cross beams of Square shape hollow profiles of 25x25mm, using reverse taper mechanism. Two legs at one end of the table are fitted with Leg bush & adjustable leveller which is an injection moulded in engineering plastic and other two legs are fixed with Castor wheels. Product come is knockdown Construction, easy to assemble, sturdy and stable product. All metal & diecast parts comes with powder coating finish of 60-80 microns thick. All hardware are of steel 8.8 grade comes with zinc blue / yellow / black passivation.</p>	Nos	4.00

46	<p>Supplying and Fixing of Library chairs with the following specification:- GENIUS CHAIR (LIBRARY CHAIR) *Genius Stackable Chair *Powdercoated Legs *Can be ganged for straight line. Colour : Black & White</p>	Nos	24.00
47	<p>Supplying and Fixing of Cupboards with the following specification:- CUPBOARDS (LIBRARY CUPBOARDS) KD-036 Swing glass doors with four shelves, 5 levels of box files W 900 x D 400 x H 1850 Material thickness: 0.8mm High quality cold rolled steel plate 3. Surface: Powder coating 4. KD structure 5. Packing: 5 layers carton</p>	Nos	8.00

48	<p>Supplying and Fixing of Table with the following specification:-Principal Cabin Table VMT-1890 - MAIN TABLE V2D-1F - PEDESTAL</p> <p>Table Top- Made of 25mm thick prelaminated particle board of approved shade confirming to E1 norms. All the edges of workstation surface shall be provided with machine pressed 2mm thick imported PVC lipping glued with hotmelt Eva glue free from any VOC.</p> <p>Gable End And Modesty - Made of 25 & 18mm thick prelaminated particle board of approved shade confirming to E1 norms. All the edges of workstation surface shall be provided with machine pressed 2mm thick imported PVC lipping glued with hotmelt Eva glue free from any VOC.</p> <p>Prelam Pedestal- Pedestals enhance the storage space for documents and other materials with built in security arrangement. They are placed at the convenience of the user subject to availability of space. There are standard design for these Pedestals based on its utility and functionality.</p> <p>Pedestals: The pedestals are made of 18mm PLB. The drawers are made metal sides- called "Meta Box"- powder coated in Ivory finish. The "Meta Box" comes in 3 sizes- 55, 75 and 110 mm.</p> <ul style="list-style-type: none"> • The "Meta Box" slides on a channel with nylon rollers. • The drawer bottoms and back are made of 12mm PLB. • All the exposed portions have 1mm thick PVC edge band. • Provided with locks- multi lock which can lock all the fascias together. Keys are provided in duplicate. • Provided with Finger groove handles • Provided with castors (mobile) • The back of the pedestals will normally be white finish unless specifically asked. 	Nos	1.00
49	<p>Supplying and Fixing of Chairs with the following specification:-PIXEL HB - Leatherette (Principal chair)</p> <p>* High Back Chair * Seat & Back Leatherette * Multilock with Knee tilt Mechanism * Aluminum Fixed Arms * Gaslift * Aluminum Base * 60mm castors. Colour : Black, Grey & Tan</p>	Nos	1.00

50	Supplying and Fixing of Visitor chairs with the following specification:- PIXEL MB - Leatherette (Principal visitor chairs) * Medium Back Chair * Seat & Back Leatherette * Multilock with Knee tilt Mechanism * Aluminum Fixed Arms * Gaslift * Aluminum Base * 60mm castors. Colour : Black, Grey & Tan	Nos	3.00
51	Supplying and Fixing of Tandem Seating with the following specification:-		

51A	<p>Supplying and Fixing of Single Seater Tandem with the following specification:-</p> <p>PRINCIPAL CABIN Forum 2 Seater Tandem * With Cushion Seat * With Mesh Back * With Fixed Arms</p> <p>Beam & Legs are from uniquely designed powder coated MS tubes , the foot are from high pressure diecast aluminium material comes with height adjustable levellers to take care even if there is a floor undulation upto 8-10mm. The Feet, Leg & Beam comes in flat pack, knock down condition and are fixed using zinc passivated best grade hardware. Seat & back are integrated & each seat comes with handle / Arm rests. Seat is a moulded foam, upholstered with fabric and back is high quality mesh provides ample air circulation. The product offers the best ergonomic seating & comfortable back rest.</p> <p>All Metal & aluminium parts comes with powder coating finish of 60-80 micron thk.</p>	Nos	1.00
-----	--	-----	------

51B	<p>Supplying and Fixing of 3 Seater Tandem with the following specification:-</p> <p>PRINCIPAL CABIN Forum 2 Seater Tandem * With Cushion Seat * With Mesh Back * With Fixed Arms</p> <p>Beam & Legs are from uniquely designed powder coated MS tubes , the foot are from high pressure diecast aluminium material comes with height adjustable levellers to take care even if there is a floor undulation upto 8-10mm. The Feet, Leg & Beam comes in flat pack, knock down condition and are fixed using zinc passivated best grade hardware. Seat & back are integrated & each seat comes with handle / Arm rests. Seat is a moulded foam, upholstered with fabric and back is high quality mesh provides ample air circulation. The product offers the best ergonomic seating & comfortable back rest.</p> <p>All Metal & aluminium parts comes with powder coating finish of 60-80 micron thk.</p>	Nos	1.00
52	<p>Supplying and Fixing of Side Table with the following specification:-</p> <p>GLAMOUR (PRINCIPAL CABIN SIDE TABLE) METAL LEGS 900DiaX550H</p>	Nos	1.00

53	<p>Supplying and Fixing of Centre Table with the following specification:- CORNER TABLE-SQUARE SHAPE (PRINCIPAL ROOM) 600WX600DX 450H Table top : For Office / meeting tables - 25mm thk prelaminated particle board with 2mm edge banding finish Understructure: supported on MS powdercoated leg .</p>	Nos	2.00
54	<p>MS SLOTTED AGGLE RACK - 900mm W X 450mm D X 2100mm H (STORE ROOM) Providing, and Arranging s 2mm thick rack having load bearing members made of high strength MS angle with having six shelving CRCA sheet 20 Gauge, making five compartment, all the components having powder coating with thoroughly anti rust treatment including all necessary fixture, fastners, fittings, labour material machinery etc complete as seletced and directed by Engineer Incharge.</p>	Nos	4.00
TRAINING SHED			

55	<p>Supplying and Fixing of Table with the following specification:-VETERNIRY DOCTOR Table Top- Made of 25mm thick prelaminated particle board of approved shade confirming to E1 norms. All the edges of workstation surface shall be provided with machine pressed 2mm thick imported PVC lipping glued with hotmelt Eva glue free from any VOC. Gable End And Modesty - Made of 18mm thick prelaminated particle board of approved shade confirming to E1 norms. All the edges of workstation surface shall be provided with machine pressed 2mm thick imported PVC lipping glued with hotmelt Eva glue free from any VOC. Prelam Pedestal- Pedestals enhance the storage space for documents and other materials with built in security arrangement. They are placed at the convenience of the user subject to availability of space. There are standard design for these Pedestals based on its utility and functionality. Pedestals: The pedestals are made of 18mm PLB. The drawers are made metal sides- called "Meta Box"- powder coated in Ivory finish. The "Meta Box" comes in 3 sizes- 55, 75 and 110 mm. The "Meta Box" slides on a channel with nylon rollers. The drawer bottoms and back are made of 12mm PLB. All the exposed portions have 1mm thick PVC edge band. Provided with locks- multi lock which can lock all the fascias together. Keys are provided in duplicate.</p>	Nos	1.00
56	<p>Supplying and Fixing of Chair with the following specification:- ALPHA MBG FXD ARMS - Black (DOCTOR CHAIR) * Alpha Medium (Black) Back Mesh Chair * AN 70 Mesh * Fabric Upholstered Cushion Seat * Centre Tilt Mechanism * Fixed Arms * Gaslift * Nylon Base * 50mm Castors</p>	Nos	1.00

57	<p>Supplying and Fixing of Chair with the following specification:- ALPHA VA PC 4 LEGS -PP Black (VISITOR CHAIR)</p> <p>*Alpha Medium PP Back Mesh Chair * AN 70 Mesh * Fabric Upholstered Cushion Seat * Fixed Arms * Powdercoated 4 Legs * with PU castors</p>	Nos	2.00
58	<p>Supplying and Fixing of Cupboards with the following specification:- CUPBOARDS (VETERINARY DOCTOR OFFICE) KD-036</p> <p>Swing glass doors with four shelves, 5 levels of box files W 900 x D 400 x H 1850 Material thickness: 0.8mm High quality cold rolled steel plate 3. Surface: Powder coating 4. KD structure 5. Packing: 5 layers carton</p>	Nos	1.00
CONVENTIONAL FURNITURE WORK			

59	<p>PROVIDING & FIXING 0.7MM THICK ANTIMICROBIAL POWDER COATING ALUMINIUM CLIP IN PLAIN METAL FALSE CEILING SYSTEM :</p> <p>Providing & Fixing of Metal Tile ceiling system comprising of Tile of 600mm wide and 600mm long manufactured of 0.7mm thick Aluminium Clip-In Plain with Antimicrobial coating Ceiling system. Tile ends will be raised with pips and stops to ensure positive engagement into the spring to enable for de-mounting of individual panels. The Tile sides will be sufficiently high to ensure a minimum deflection across the length of Tile. All tiles will be bevelled or square edged. The Tile shall be powder coated with IAM serious of polyester base powder coating, formulated without the use of TGIC that has to be tested by interdependent labourites to the requirements of the internationally recognised test standards JISZ 2801:2000 and tile shall be clipped into clip-in rail of 0.5mm thick G.I. The clip-in profile shall be supported from slab by means of suspension of 4mm G.I. Rod, Hold on Clamp with Clip. and rates also included for making trap door for maintenace purpose with required accesories and frame work. Properties of Metal Ceiling :</p> <p>PROPERTIES RELEVANT STANDARDS • Resistance to neutral salt spray: - ISO 9227 • Resistance to humid atmospheres: - ISO 6270-2 • Impact resistance: - ASTM D2794 (5/8 " ball) (inch-pounds, front and reverse) Guard Endure D6 AB Guard Endure D8 AB (Gloss: 25-59) Guard Endure D8 AB (Gloss: 60-85)</p>	SQM	257
----	--	-----	-----

	<ul style="list-style-type: none"> • Determination of antibacterial activity: - MOD ISO22196 • Pencil hardness test: - ASTM D3363-05 (Derwent Graphic) • Scratch resistance: - ISO 1518-1 / SIS 83 91 17 • Cupping test: - ISO 1520 <p>Antimicrobial coating is in conjunction with BioCote Ltd. should be tested for antimicrobial efficacy vs the ISO 22196:2011 and exhibited a minimum of 95% and up-to 99.99% reduction in bacterial population, classified as “microbiological results satisfactory”. Testing by BioCote Ltd. carried out by an independent laboratory and has included the following bacteria: -</p> <ul style="list-style-type: none"> • Methicillin resistant Staphylococcus aureus (MRSA) • Escheria coli 0157 • Salmonella typhimurium • Bacillus subtilis • Pseudomonas aeruginosa • Clostridium perfringens • Streptococcus faecalis • Enterococcus hirae & Streptococcus pyogenes. <p>Mode of Measurement : Measurements shall be wall to wall without any deductions for lights, diffusers, columns etc.</p>		
60	<p>P/F Suspended 12.5mm thick (Saint Gobbin, Armstrong, Shera, Gyproc make)Plain board Ceiling includes GypSerra™ Perimeter Channel Material GI(IS513) ,YS260Mpa,Finish-Galvanised 150GSM(IS277) is fixed along the Perimeter of existing wall/ partition with the help of PVC Anchor (6x40) at 600mm c/c for brick wall /RCC wall</p> <p>Comprising of following</p>	SQM	600

	<p>GypSerra™ Ceiling Angle Material-GI(IS513), YS260Mpa, Finish-Galvanised 150GSM(IS277)} is suspended by fixing it to the Gyproc® soffit cleat {GI(IS513)YS-260Mpa, Finish Galvanised 120GSM(IS277)}. Soffit Cleat and Gyproc® RawlPlug- Ø8x45mm {Material-IS 513 CR1 grade, Zinc coating (7 to 8 microns) pull out load- 6.8kN for M30 concrete grade} creating 1220mm x 1220mm grid.</p>		
	<p>GypSerra™ Intermediate channel {Material-GI(IS513),YS260Mpa,Finish-Galvanised 150GSM(IS277)} is fixed to the GypSerra™ Ceiling Angle with M6 x 12mm Hex Bolt & Hex Nut arrangement {Material-As per EN 10083 Finish – ZincPlating} or with 2 Nos of Ø4.2x13 Gyproc® Metal to Metal screw {Material-Carbon steel EN-ISO 7049/50 Finish- ZincCoating Thickness- 4.14micron.}</p>		
	<p>The GypSerra™ Ceiling Section {Material-GI(IS513), YS260Mpa, Finish-Galvanised 150GSM(IS277)} is then fixed to the GypSerra™ Intermediate Channel {Material-GI(IS513),YS260Mpa,Finish-Galvanised 150GSM(IS277)} with the help of Gyproc® Connecting Clip {Material-High carbon spring steel wire(BS970Gr.En42)-46-48HRC,Finish-Zinc plating4-6 micron} and in direction perpendicular to the Intermediate channel at 457mm c/c.</p>		

	<p>Single layer of 12.5mm tapered edge Gypboard® Plain (conforming to IS 2095 (Part 1):2011, Certified board) is then screw fixed to ceiling section with 25mm Drywall screws {Material-Carbon steel EN-ISO 7049/50,Finish-Case hardened Grey Phosphating} at 230mm centres on ceiling section & 150mm at periphery of ceiling.</p>		
	<p>Finally square and tapered edges of the boards are to be jointed and finished so as to have a flush look which includes filling and finishing with Gyproc® Pro-Fill Jointing compound (Conforms to ASTM C475), Gyproc® Joint Paper tape.</p>		
	<p>Serrated section has effective thickness of 2T (2xdepth), better load carrying capacity, enhanced screw retention, Improved acoustic performance & fire resistance as compared to plain steel section. 8. All GypSerra™ metal components are Design Patented in India (325062)</p>		
	<p>NOTE:- (1) Rate includes making necessary cutouts for lighting fixtures (2) Pattas of Less than 1'-0" shall be measured in Rft. (3) Only finished surface area shall be measured for payment.(4)Supporting mamber shall be carried out as per standerd specification of manufacture and satisfaction of engineer incharge.</p>		

61	<p>Perforated Gypsum Ceiling Providing & laying M/F Suspended single layer of 12 mm tapered edge Ecogyp Random perforated Gypsum Board ceiling , which includes metal frame work with using CS55, IC91, PC55, CA55 CRP surface ribbed perimeter channels with the help of nylon sleeves and screws at 610mm centres along the perimeter of ceiling. Then Ecotone CRP surface ribbed intermediate channels of size 45mm from the soffit at 1220mm centres with ecotone ultra™ CRP surface ribbed ceiling angle fixed to soffit with cleat and steel expansion fasteners. Then ecotone ultra™ CRP surface ribbed Ceiling section are then fixed to the ecotone ultra™ intermediate channel with the help of connecting clip and in direction perpendicular to the ecotone ultra™ intermediate channel at 457.5mm centres. Single layer of ecogyp perforated gypsum board of size 2440mmx1220mmx12 mm thick Random perforation acoustic gypsum board with perforation size of 8 MM/15 MM/20 MM. and using Rock wool between framing and panel with the specification of 50mm thick and 48kg density. then screw fixed to ceiling section with 25mm drywall screws at 230mm centres. Finally square and tapered edges of the boards are to be jointed and finished so as to have a flush look which includes filling and finishing with Jointing compound, Jointing paper tap and all required takels and tools (Section must from Ecotone ultra Brand)including all accessories, material & labor complete as directed by Architect / Engineer – in – charge.</p>	SQM	120
62	<p>Providing and fixing Dual Roller - Zebra Blinds manual Comprising of following. (Recommended Make Vista, Ddecor, Asian Paints, Hunter Douglas)</p>	SQM	187
	<ol style="list-style-type: none"> 1. Composition: 100% Polyester. 2. Min. Fabric Thickness: 0.6 mm. 3. Min. Fabric Weight: 200 GSM 4. Stripe Size: Solid-10cm /Sheer-7cm 		

	<p>Control Unit To be made of high strength reinforced plastic; clutch to be made of high carbon steel of wrap spring design to transmit motion from the driven mechanism. Clutch is to be operated directionally by the use of beaded endless chain to raise and lower the blind smoothly to decide height.</p>		
	<p>Idler To be made of high strength reinforced plastic, consisting of an outside sleeve and centre shaft. Valance Rail Made of aluminium extruded section of high strength Al. alloy and powder coated in white. Size: 84 mm Width; min. weight 320gms/running mtr. - Ceiling Rail Aluminium Extruded Rail made up of High Strength aluminium alloy and powder Coated in White. Size: 75 X 12mm; Min. Weight= 480gms/running mtr. Roller Tube Made up of High Strength Anodized Aluminium alloy Extruded grooved tube. Size: 40mm outside diameter, min. weight = 220gms/running mtr</p>		

	<p>Bottom Rail Round type and made up of high Strength Aluminium alloy extruded tube and power coated in white. Size: 14mm outside dia.; Min. weight: =220gms/running mtr Operating chain To be made of 4.5 mm plastic beads moulded on 2.0 mm thick polyester cord. The pitch of the beads is 6mm. The chain drives the sprocket fixed in the end control unit to close and open the blind. The pitch of the chain corresponds to the sprocket in perfect match for trouble free operation.</p>		
	<p>Fixing brackets and clamps Installation Bracket: To be made up of mild steel with white powder coating having thickness of 1.8 mm and used for mounting control unit & idler. Ceiling Bracket: To be made up of mild steel with white powder coating having thickness of 1.0 mm and used to fix the blind to the wall or ceiling. End Cap End cap for bottom rail, Ceiling rail and valance rail to be made up of high strength molded plastic in white colour.</p>		

63	<p>Providing and fixing wall acoustical paneling Fixing with screw fixed horizontal/vertical to wall at every 600mm c/c. Metal cleat can be fixed on top edges of Sound Strut Ceiling Section 55 fixed directly by stamping to the CS55 and Intermediate Channel-91 which is screw fixed directly to the wall where ever required and using Rock wool between framing and panel with technical specification of 50 Kg Density and 50MM thick and above CS55 fixing aluminum channel with clip and fixing ecotone Slato Acoustic Panel make Slats L-16 of size 192mmx2440mmx16mm thick up to 2440mm high as per the following specification :-Slats L-16- 2mm @16mm, 32 x 128 x 2430 mm high E1 grade Pine wood base Medium Density Fiber acoustic boards with Tongue & Groove Edge,2mm slot perforation @ 16mm centre, slates perforations, The acoustic should be furnished with a Black absorbent felt backing with an airflow resistance of 330-460 Ns/m³ (DIN 53887),wood practical core,NRC : should be Up to 0.75,should meet the safety requirements of EN 14190. The colour of panel as approved by Architect and as specified including all accessories, material &labour complete as directed by Architect / Engineer – in – charge.</p>	Sqmt	252
----	---	------	-----

64	<p>Clara Fabric Wall Paneling Providing and fixing acoustical wall paneling with using ecotone or equivalent approved make ultra metal frame work to be fixed on wall at every 600mm horizontally and 1200 mm vertically fixed with the help of Metal cleat by using IC-91 which is screw fixed directly to the wall and fixing CS 55 on IC91 with help of clip/Screw and where ever required and using Knauf make insulation glass wool between framing and panel with technical specification of 48 Kg/m³ and 50MM thick on above CS55 fixing SONIDO acoustic board of size 1200 x 600 x 15mm fix on CS55 and then fixing 6MM thick ply wood of size 50MM than fixing vinyl grippers of ecotone make EG 15 Griper system using ,Tracks (Perimeter Track , Half wrap, mid seam whatever is required) . Vinyl grippers must have base tapes for better grip. Fixed in between Vinyl grippers and sonido board pasting ecotone synco PF of 10X10mm thick on the acoustical panel by using adhesive as per specifications of manufacturer. Fabric Stretching Supplying and laying FR grade fabric stretch Clara Fabric shade vide catalogue Name Brass/Atom is then cut into required size and shape and stretched, inserted inside the gripper by using tools recommended by manufacturer, by Architect and as specified including all accessories, material & labour complete as directed by Architect / Engineer – in – charge</p>	Sqmt	81
----	--	------	----

65	<p>Marco Polyester Fiber Acoustic Wall Paneling Providing and fixing wall acoustical paneling Fixing Ecotone make Marcopolyester fiber acoustic wall paneling with the specification of 12MM thick Grooved panel having density of 1.90kg/m2 with NRC value of 0.70 surface matt finish which is fixed with ecotone nail free silicon as required. The panel should have euro class BASTME 84-13 fire rating. The color shade of Panel as approved by Architect. Including all accessories, material & labor complete as directed by Engineer.</p>	Sqmt	168
66	<p>Providing and fixing M.D.F. Wall & Column Panelling for the existing surfaces to be made out of 16 gauge Aluminium framework backing of size 2" X 1" at 1' 6" to 2' 0" c/c to be covered with 10mm thick MDF board backing and finished with P.U. coating of approved shade, colour & texture including teakwood moulding of 3mm size all around the periphery including groove work as directed by Architect.</p>	Sqmt	29
67	<p>Providing and fixing exterior grade Coloured Composite Panel skirting of approved make of 4mm thick xerior grade PVDF with coil thick of 0.25mm & frame work made out from Alluminium section of size 50mm X 25mm (w app = 0.57 kg/m) having weight of 2.6 kg for 15' supproted on Masonary/RCC with the help of screws and nails and composite panel fixed with Silicon dow corning 789 Silicon sealant & Grooved fixed with Silicon sealant.</p>	Sqmt	3

68	Providing and fixing Carpet flooring using Carpet of approved make, shade and pattern of the following specification:- High cut - Low loop carpet , Premium Solution Dyed Nylon with Anti Stain Treatment, 1/10 guage , minimum Pile height should be 8.0 mm Cut and 3.5 mm Loop or with acceptable tolerance , total minimum thickness 9.0 mm , Tile size sholud be minimum 500 mmx 500 mm , Secondary Back Commercial 100% Re-cyclable. Wear Warranty-product should be warranted for 10 years. Warranty with minimum weight loss of pile and colour . All yarns used are solution dyed to minimize use of water and exclude any effluent production.	Sqmt	341
69	Providing and fixing name plate/signage made out of 3mm thick ACP as signage and display of health signs / information of required size having retro reflective letters / design as per requirement, fixing the same through approved necessary hardware ,adhesivelabour charges etc. complete, work shall be carried out as per instruction of Engineer-in-charge.	Sq. Inch	50.00
70	Rafter Ligth Curve Providing and fixing Curve paneling rafter by using 18 mm ply and laminate with all material and labour etc complete as directed by Engineer.	RMT	100
71	Providing and fixing Murals of approved design and make as per direction. The design /picture shall be approved by architect .	Nos.	4.00

72	Providing, Supplying and fixing Painting of approved design and make as per direction. The design /picture shall be approved by architect .	Nos.	6.00
73	Providing and supplying fiberglass reinforced or other material planter/flower pot as per required size, shape, color finish etc... as per architects .	Nos.	10.00
74	Providing and supplying planter/flower pot .	Nos.	10.00
75	Providing and supplying artificial plants/trees/flower as per architects selection .	Nos.	25.00
76	Providing and supplying 10 inch dia SS perforated pedal dustin .	Nos.	4.00

Technical Specification Electrical

SR. NO	ITEM CODE	DESCRIPTION	QTY	UOM
1	100029135	Supply, Installation, Testing & Commissioning of ON LINE UPS system with SMF battery and 30 min back and with battery rack complete in all respect. 1 set. of 7.5 KVA UPS Single Conversion Type UPS 1 ph in 1 ph out for unbalance (Computer) load with 30 minutes backup. Battery Rack with protective cage is included in the scope of supply.	4.00	NO.
2	1E+08	Supplying, installation, testing and commissioning of Minimum 86"(inch) Interactive LED display with 3840*2160 (4K UHD) Resolution, Minimum 20 Touch Point Multi finger touch, Built-in speakers: 2 x 20W RMS , Minimum Anroid 11 Supported OS, 32GB Flash Memory , Minimum 4GB DDR4 RAM , Built in Memory 32 GB & Upgradable up to 64GB, Minimum 450 Cd/m2 brightness, Built in Wi-Fi 6 module, Interfaces : HDMI IN X 3NOS., HDMI Out X1, USB Type C X 2NOS., USB Type A X 4NOS., USB Type B X 2 NOS., OPS Slot, RJ45 X 2 NOS., Microphone In, Camera Module and wall mount kit as per site requirement. as per technical specification etc. as required.	1.00	NO.
3	100029260	Supplying, installation, testing and commissioning of 1080p 4000LM lumens 3LCD Laser Projector, With Standard Lens, Input terminal : D-Sub 15Pin X 2NOS. HDbaseT RJ45 x 1, HDMI X 2NOS., Stereo Mini Jack x 2NOS. Output Terminal : D-Sub 15Pin: 1 Shared with Computer 2, Stereo Mini Jack: 1 with ceiling mount kit (2feet + 2feet) or as per site requirement, as per site requirement as per technical specification etc. as required.	10.00	NO.

4	100029261	Supplying, installation, testing and commissioning of 5000 lumens WUXGA 3LCD Laser Projector, Contrast Ratio - 2,500,000 : 1, With Standard Lens, Input terminal : D-Sub 15Pin X 2NOS. HDbaseT RJ45 x 1, HDMI X 2NOS., Stereo Mini Jack x 2NOS. Output Terminal : D-Sub 15Pin: 1 Shared with Computer 2, Stereo Mini Jack: 1 with ceiling mount kit (2feet + 2feet) or as per site requirement, as per site requirement as per technical specification etc. as required.	2.00	NO.
5	100029275	Supply, Installation, Testing & Commissioning of 6.5" Two-way 60 Watt @8 ohms rimless Ceiling loudspeaker with magenatic grill suitable for 70/100 V line, 60 Hz - 20 KHz frequency response, SPL Max.104 dB, Sensitivity 86dB (1W @ 1m).as per the technical specifications etc. as required.	40.00	NO.
6	100029276	Supply, Installation, Testing & Commissioning of Two-way 60 Watt @8 ohms Wall Surface Mount loudspeaker with 70/100 V line, 60 Hz - 20 KHz frequency response, SPL Max.104 dB, Sensitivity 86dB (1W @ 1m).as per the technical specifications etc. as required.	10.00	NO.
7	100029277	Supply, Installation, Testing & Commissioning of 1 X 120 W Mixing Amplifier, Supports 4Ω and 70V/100V outputs, Class D amplifier topology, Two mic/line level inputs with 48V phantom power. Frequency Response Mic: 50 Hz - 20 KHz, Four stereo inputs, Four priority levels for audio routing, 24V priority output overrides local volume controls, CE marked, UL listed, and RoHS compliant, as per technical specification etc. as required.	4.00	NO.

8	100029281	Supply installation testing and commissioning of UHF Wireless Cardioid dynamic handheld microphone system with Frequency Response of 100 Hz to 15 kHz (+1 dB, -3 dB), RF Sensitivity 20 dBuV at 60 dBA S/N ratio (50Ω termination), Total Harmonic Distortion <1.0% (at 1 kHz, ±20 kHz deviation) , Dynamic Range > 110dB , on/off switch operating range 100 mtrs , RF Power Output High: 30 mW, Low: 10 mW (switchable) at 50 Ω , Multiple band with 10 channels on each band ; maximum Output level XLR / Balanced: +9 dBV & 6.3 mm (¼") / Unbalanced: +4 dBV as per technical specification etc. as required.	10.00	NO.
9	100029289	Supply, Laying, Testing and Commissioning of Ultra Flexible High Speed HDMI Cables HDMI Cable 5 Meter HDMI 2.0 Cable Male to Male, support Deep Color, 4K 4096 x 2160 @60Hz; 3840 x 2160 @ 60Hz 4:4:0, Minimum conductor gauge - 30AWG, gold Plating, as per technical specification etc. as required.	5.00	NO.
10	100029290	Supply, Laying, Testing and Commissioning of Ultra Flexible High Speed HDMI Cables HDMI Cable 10 Meter HDMI 2.0 Cable Male to Male, support Deep Color, 4K 4096 x 2160 @60Hz; 3840 x 2160 @ 60Hz 4:4:0, Minimum conductor gauge - 30AWG, gold Plating, as per technical specification etc. as required.	4.00	NO.
11	100029291	Supply, Laying, Testing and Commissioning of Ultra Flexible High Speed HDMI Cables HDMI Cable 15 Meter HDMI 2.0 Cable Male to Male, support Deep Color, 4K 4096 x 2160 @60Hz; 3840 x 2160 @ 60Hz 4:4:0, Minimum conductor gauge - 30AWG, gold Plating, as per technical specification etc. as required.	1.00	NO.

12		<p>SITC of 100kva Silent DG set- Three Phase Silent Diesel Generator Set comprising of Water cooled Engine @ 1500 RPM coupled with 3Phase, 415 Volts, 50 Hz, 0.8 pf Alternator mounted on a base frame along with Fuel Tank, Battery with leads, first fill of lubricating Oil, Engine Safeties & Protections, Anti Vibration Mounting Pads, Control Panel and Acoustic Enclosure as per the CPCB Norms.The Kirloskar 100 kVA Three Phase Silent Diesel Generator is a high-performance power solution manufactured, exported, and supplied from Ahmedabad, Gujarat, India. Engineered with the robust KG1-100WS engine model and featuring the reliable Kirloskar Green alternator, this generator delivers consistent power output with reduced noise levels, making it ideal for industrial, commercial, and institutional use. It has a fuel tank capacity of 230 liters and a fuel consumption rate of 21.9 liters per hour, ensuring extended operation with fewer refueling interruptions. Built for efficiency and durability, the generator comes in a compact size of 3200x1300x1795 mm, with a bore and stroke of 105*125, ensuring smooth operation and longevity even in demanding environments.</p>	1.00	NO.
3	Epson / Sony / LG	<p>Supplying, installation, testing and commissioning of 3 LCD Laser Technology 7000,LCD, WUXGA Resolution, Interfaces: HDMIx2, HDBaseTx1, RJ45, Contrast Ratio: 25,00,000:1, with required projector mounting bracket as per site requirement as per tender specification.</p>	Each	1
5	Liberty GrandView / Drapper / Da-lite	<p>Supplying, installation, testing and commissioning of 164 inch diagonal Tabular motorized Fiber Glass, 16:10 format ration Projector Screen with Ceiling / Wall mount bracket, Should have IP Multi Control Screen as per tender specification.</p>	Each	1

6	Newline / ViewSonic / Samsung	Supply Installation Testing & Commissioning of 43 Inch 4K Display - 24 X 7 Per Day Functionality, Brightness: 520 nits (typ.), Contrast Ratio: 4000:1, Response Time: 6.5ms, Surface Treatment: Anti-Glaire, 3H hardness, Haze 25%, Type/ Tech: TFT LCD Module DLED backlight, Supported Colors: 1.07G (8bits + FRC), Orientation: Landscape & Portrait, Should have Android 14 Embedded OS with Processor: Quad-core, 4GB RAM, 32Gb Storage, Input port- HDMI: 2.1 x2 (HDCP 2.2) RS-232: x 1 IR Pass Thru: x 1, OUTPUT Port: RS232: x 1 IR Pass Thru: x1, USB Port : Type A: 2.0 x 2 Type C: x1 (DP1.2, PD 15W, USB2.0), Should have 10Wx2, as per technical specification attach.	Each	2
13		Lights (Volleyball & Bedminton court) : Supply & Installation of LED lights : 8 Nos. LED Lights: 200 W Power : 200W, Voltage: 100-265 V AC 50-60 Hz. Luminous Efficiency : 100l m/w. Beam angle : 120 degree CCT: 5700k. Ra>70 Material : Aluminium SMD LEDs IP grade : IP65 waterproof Installation of luminary and wiring with armoured cable on GI poles Provision of MCB and all accessories with outdoor junction boxes. Supply of cables 2 C 2.5sqmm coil (Armoured) Main line from nearest source.	2.00	Job`

Technical Specfication Light Work

SR. NO	ITEM CODE	DESCRIPTION	QTY	UOM
1		<p>SITC of linear lights are elongated, energy-efficient LED fixtures designed for modern spaces, available in suspended, recessed, and surface-mounted options. They feature sleek, minimalist designs with features like seamless, end-to-end connectivity, high-efficiency and uniform illumination, and long lifespans 4 foot 30 Watt. (minimum IP 20 protected) neutral white light colour lumen output of minimum 4000 lumens maintain min. 70% of lumen output at 50000 burning hrs. Minimum inbuilt surge protection of minimum 2KV THD<10%. Servicability class B The fixture should be complete with all necessary surface mounting accessories. LM80 & LM79 report, technical test certificate of the fixture in accordance with IS & IEC standards and detailed driver report to be submitted.</p>	80.00	NO.
2		<p>SITC of Down Light an energy-efficient LED downlight with a sleek, rimless design. It provides wide, glare-free illumination suitable for various indoor spaces like homes, offices, and retail environments 15W Downlight. lumen output of minimum 1350 lumens maintain min. 70% of lumen output at 50000 burning hrs. Minimum inbuilt surge protection of minimum 2KV THD<10%. Servicability class B The fixture should be complete with all necessary surface mounting accessories. LM80 & LM79 report, technical test certificate of the fixture in accordance with IS & IEC standards and detailed driver report to be submitted.</p>	182.00	NO.

3		<p>SITC of COB Light high power, 15W LED COB Light which consumes a maximum of 300mA. The size of the LED is 11 mm and is commonly used in LED Bulb manufacturing. lumen output of minimum 1350 lumens maintain min. 70% of lumen output at 50000 burning hrs.</p> <p>Minimum inbuilt surge protection of minimum 2KV THD<10%.</p> <p>Servicability class B The fixture should be complete with all necessary surface mounting accessories. LM80 & LM79 report, technical test certificate of the fixture in accordance with IS & IEC standards and detailed driver report to be submitted.</p>	50.00	NO.
4		<p>SITC OF linear lights are elongated, energy-efficient LED fixtures designed for modern spaces, available in suspended, recessed, and surface-mounted options. They feature sleek, minimalist designs with features like seamless, end-to-end connectivity, high-efficiency and uniform illumination, and long lifespans 8 foot 60 Watt. lumen output of minimum 5500 lumens maintain min. 70% of lumen output at 50000 burning hrs.</p> <p>Minimum inbuilt surge protection of minimum 2KV THD<10%.</p> <p>Servicability class B The fixture should be complete with all necessary surface mounting accessories. LM80 & LM79 report, technical test certificate of the fixture in accordance with IS & IEC standards and detailed driver report to be submitted.</p>	60.00	NO.
5		<p>SITC OF 10W LED Linear Cabinet Light 2Ft Cool White (6500K) Bright & Slim Aluminium Base Tubelight 17mm Width, 8mm Height Under Cabinet Light for Wardrobe, Kitchen Shelf</p>	8.00	NO.

6		<p>SITC OF 1ft bollard light is a short, 12-inch upright outdoor light designed to illuminate pathways, gardens, and driveways with ambient lighting 07 Watt. With 8inchX8incX1ftheight RCC base to fix bollard</p> <p>maintain min. 70% of lumen output at 50000 burning hrs.</p> <p>Minimum inbuilt surge protection of minimum 2KV</p> <p>THD<10%.</p> <p>Servicability class B</p> <p>The fixture should be complete with all necessary surface mounting accessories.</p> <p>LM80 & LM79 report, technical test certificate of the fixture in accordance with IS & IEC standards and detailed driver report to be submitted.Fixture must be IP-54 Protection</p>	25.00	NO.
7		<p>Supply and installation of hot dip galvanized street light pole 6000 MM long made from 2.5mm thk Hot rolled SteelSheet and HDGI with Gray Powercoating of 7tank process with pipe bomttom dia 132mm and top dia should be 76mm with 250X250X10mm thk base plate with foundation bolts, switch box with 30A, 4 way connector for phase, & neutral, 10 A SP MCB, GI earthing pipes with Internal Junction Box earthing wires etc complete as per the detail drawing and technical specification with single arm on top. The rate of the Item also includes the cost of excavation in ground for pole foundation, Reinforcement Steel, Cement concrete of 1:2:4 grade, necessary shuttering, bed concrete with PCC (1:4:8), back filling of excavated earth, water curing of concrete for 7 days, supply & laying of "A" Class GI pipes in the foundation for laying wires/Cables and earthings, etc. complete as directed and as per the drawing.</p>	10.00	NO.

8		<p>Supply of LED OUTDOOR POST TOP Light - 60W mimimum 4500 lumen output min. 70% of lumen output at 50000 burning hrs (minimum IP 65 protected) Powder coated pressure die cast aluminium housing . Neutral white light colour. surge protection of minimum 5KV THD<10%. Complete with all necessary mounting accessories for mounting on typical street light poles & brackets. Fixtue catalogue, LM80 & LM79 report, technical test certificate of the fixture in accordance with IS & IEC standards and detailed driver report to be submitted. Suggested Make and Model No.: Wipro: LP05-711-XXX-57-XX or Lighting Technologies (Round Shape holder)</p>	10.00	NO.
9	100001704	<p>The Crompton SilentPro Enso 1200mm BLDC fan is an energy-efficient, remote-controlled ceiling fan designed for silent operation and high air delivery. It features an ActivBLDC motor that consumes approximately 42W, has a 5-star energy rating, and delivers 14400 m³/hr of airflow. with appropriate size of fan road with clamp and all accessories to fix fan</p>	167.00	NO.
10	100001705	<p>The Crompton Drift Air Plus 300mm is a wall-mounted exhaust fan designed for ventilation in areas like kitchens and bathrooms, offering powerful air delivery of approximately 1160 CMH at 1350 RPM.</p>	25.00	NO.
11	100001705	<p>The Crompton Brisk Air Plus 200mm is an exhaust fan designed for indoor ventilation in rooms like kitchens and bathrooms. It features automatic dust-protection shutters and a rust-proof body for durability. Some models include an anti-dust coating.</p>	24.00	NO.
12		<p>SITC OF dot less led strip light with aluminium hosusing size upto 25mm with milky white arcylic difuser and appropriate size of led Driver.</p>	100.00	MTR

13	<p>Site of 24wt led track light with Track strip surface-mounted options. They feature sleek, minimalist designs with features like seamless, end-to-end connectivity, high-efficiency and uniform illumination, and long lifespans 8 foot 60 Watt.</p> <p>lumen output of minimum 5500 lumens maintain min. 70% of lumen output at 50000 burning hrs.</p> <p>Minimum inbuilt surge protection of minimum 2KV</p> <p>THD<10%.</p> <p>Servicability class B</p> <p>The fixture should be complete with all necessary surface mounting accessories.</p> <p>LM80 & LM79 report, technical test certificate of the fixture in accordance with IS & IEC standards and detailed driver report to be submitted.</p>	50.00	Nos
----	--	-------	-----

Technical Specification Electronic Appliances

SR. NO	ITEM CODE	DESCRIPTION	QTY	UOM
1		Providing and erecting water cooler having storage capacity 80Ltr. & cooling capacity 80 Ltr.per hour @ an ambient temp of 45° C. The outlet temp. of the water should drop by 15° C within a hour, The water cooler should be comprising of hermetically sealed energy efficient compressor, fan motor, condensing unit, water tank surrounded by evaporating coil, Auto control,thermostats, relay ,refrigerant used to be CFC and ECO Friendly etc. complete with necessary inlet & outlet connection. The body of water cooler will be made from Stainless Steel. Water cooler to have one year warranty	4.00	NO.
2		Supplying & erecting 5 stage(RO+UV+UF+ TDS controller/adjustment) single reverse osmosis water purification system with TFS Polyamide / Desal/ Filmtee dow/ Thin Film composite RO membrane & 0.1 to 0.001 micron.,ABS food grade plastic,Total Dissolved Solids of Up to 1500 ppm.Total Hardness of Less than 100ppm .Auto start, auto-stop based on water level in water cooler tank ,Electronics sensor for controlling water overflow from water cooler tank.,Suitable as attachment to water cooler,Auto flushing,Minimum 90% Rejection ,The double purification of RO+UF removes even dissolved impurities such as chemicals,bacteria,viruses and salts,making the water 100% pure,210 to 250 V AC, 1 PH, 50 Hz ,One Year ON Site Warranty ,LPH capacity & erected as directed [A] 50 Ltr / Hr with 50 Ltr. Storage Tank	4.00	NO.
3	100001952	Supply of Storage Type Vertical Storage Electric Water Heater (Geyser) of 25 Liters Capacity Complete with all accessories,PUF Insulated,Stainless Steel inner Tank with Rust Proof Coating 2kW heating Element,Temperature Setting thermostat type thermal cut-off, Pressure Safety Valve,Non Return Valve,Indication Lamp for Electric Power Supply Cut-off Indication,BEE-5 Star Rating,Rated pressure -8 Bar, Single Phase,50 Hz,minimum 2 Years warranty for Gyser & Heating Element & Minimum 5 Years warranty for inner Tank Suggested Make & Model :Bajaj New Shakti 25L/Racold Ethern0 2 /AO Smith HSE-VAS 025/Equivalent in Jaquar /Equivalent in Crompton	16.00	NO.
4		Supply of 12KG TOP loaded Washing machine	4.00	NO.

Technical Specification (HVAC System)

SR. NO	ITEM CODE	DESCRIPTION	QTY	UOM
		VRV/V System		
1.0		OUTDOOR UNITS VRF SYSTEM Specified Tonnage is actual, delivered TR at 45 DegC Ambient & 24 DegC Room temperature. ODU TR should be equal to or higher than the calculated cooling load after allowing for de-rating due to ambient & piping length. All outdoor equipment shall be capable of operating up to 46 DegC (115 DegF) ambient temperature. Note: 1) Configuration of ODUs (Tonnage & Numbers to be selected by bidder as per manufacturing range) 2) Rates Include Unload AC Units At site shifting at installation location MAKE: DAIKIN / Mitsubishi		
1.1		34.0hp (16HP+18HP)	2.00	Nos.
2.0		CASSETTE INDOOR UNIT FOR MINI VRV/V SYSTEM Including indoor unit, remote control, indoor panel board, electrical wiring between indoor unit & the respective power supply point, all controls, RA filters, etc. (Note: In case of non-availability of exact specified capacity, quote next higher capacity machine 2) Rates Include Unload AC Units At site shifting at installation location) MAKE: DAIKIN / Mitsubishi		
2.1		Regular Cassette Unit		
2.2		3.5 TR -Regular 4 Way Cassette Unit	12.00	Nos.
3.0		OEM Supplied Ref Joint For VRV/F Systems	12.00	Nos.
4.0		Cordless Remote for Ductable/Middle Static Hide Away A/C (After deducting cost of corded remote)	12.00	Nos.
		TOTAL OF MACHINE WORK		
		Low Side Work (Piping, Stands, Drain Piping ETC.,)		
1.0		Condensing Unit Stand for ODUs Placed on terrace Epoxy coated or hot-dip galvanized platform type MS stands of adequate weight-bearing capacity as per site condition. Rates to include double rubber pads & galvanised MS plate for each leg.		
1.1		VRV Units	2.00	Nos.
1.2		FOR NON VRV UNITS	1.00	Nos.
2.0		Insulated Refrigerant Pipes, Fittings, Electrical Wiring, Control Cabeling(From IDU to ODU) ETC.,		

2.1		Refrigerant pipes, pipe fittings, GI angles/flats supports, accessories, electrical wiring between indoor & outdoor units, <u>19mm Class "O" Nitrile Rubber Insulation Sleeves</u> for entire piping system. (including UV & mechanical protection for exposed pipes as per Technical Specifications.) Refrigerant piping on terrace shall be installed on GI pipe tray, and finally covered with GI sheet cover for protection. <i>(Rates should include the same.)</i> MAKE: COPPER PIPE : MANDEV/RAJCO/TOTALINE INSULATION: ARMACELL / K FLEX/ SUPREME	150.00	Rmt.
3.0		Drain Piping with required civil activity like Zari in wall and refiling it. MAKE: SUPREME/ ASTRAL/ ASHIRVAD		
3.1		40mm dia CPVC drain piping (with 8mm rubber Insulation) drain header to the respective drain point	100.00	Rmt.
4.0		Refrigerant Charging-For Vrv / Non VRV System		
4.1		Supply and Charging of R410a Refrigerant PER System	2.00	System
5.0		Civil works like core cut & zari works	1.00	Lot
6.0		Supply and Installation of Cowl Piece with Bird mesh for Top Discharge Outdoor Unit	2.00	Nos.
		TOTAL OF LOW SIDE WORK		
		NON VRV SYSTEM		
1.0	100028747	Providing and erecting Inverter based approved make split air-conditioning unit consisting of condensing unit with variable speed fan motor, inverter type hermetically sealed rotary compressor with accessories etc. duly connected separately erected evaporating unit and blower motor with its accessories by means of extra supplied proper insulated copper tubing, drain PVC pipes suitable for (cost includes Eco Friendly green gas charging and 15A plug top & Remote Control & MS Stand) with necessary core cutting. For 4/5 star Rating of current year <i>(Rate to include necessary splitters/turning vanes, etc)</i>		
1.1		For 2.5 ton capacity	3.00	Nos.
2.0		Insulated Refrigerant Pipes, Fittings, Electrical Wiring, Control Cabeling(From IDU to ODU) ETC.,		
2.1	100028757	Refrigerant pipes, pipe fittings, GI angles/flats supports, accessories, electrical wiring between indoor & outdoor units, <u>19mm Class "O" Nitrile Rubber Insulation Sleeves</u> for entire piping system. (including UV & mechanical protection for exposed pipes as per Technical Specifications.) Refrigerant piping on terrace shall be installed on GI pipe tray, and finally covered with GI sheet cover for protection. <i>(Rates should include the same.)</i> MAKE: COPPER PIPE : MANDEV/RAJCO/TOTALINE INSULATION: ARMACELL / K FLEX/ SUPREME	30.00	Rmt.

3.0		Drain Piping required civil activity like Zari in wall and refiling it. MAKE: SUPREME/ ASTRAL/ ASHIRVAD		
3.1	100028761	25mm dia CPVC drain piping (with 6mm rubber Insulation) from each HAT/DSAC to drain point/header	30.00	

Approved make and model

APPROVED BRANDS & MATERIALS

Unless otherwise mentioned specifically, the contractor should get the approval of the Client/Architect before using the materials. All makes/ brands shall be IS marked wherever applicable and shall be of the First Quality. Wherever contractor proposes to use equivalent makes (i.e. other than specified), the same shall be done only after prior approval of the Client/ Architect. Any additional expenditure and time due to this shall be solely on contractor's account and no claims whatsoever shall be entertained.

	MATERIALS	APPROVED MAKE/BRANDS
1	Modular Furniture	HOF/Godrej / Geeken/Steelcase
2	Plywood	Century ply/ Greenply/ Marino
3	LAMINATE –CONFIRMING TO IS :2046-1995	Greenlam / Merino /Century LAM
4	MDF /HDF	Century / Archid /GREEN
5	Teak Wood Beading /Lipping	GHANA Teak
6	Emulsion & Enamel paint	Asian /Dulux / Berger/ ICI
7	Wall Putty	Asian/ Birla
8	Duco	Asian /Dulux / Berger/ ICI
9	Auto Closing Hinges	Haffle/ / Dorma/ Kich
10	Drawer slides, Keyboard Tray, Grommet	EG / Ebco / Ozone/ Dorma/ Inox
11	Hardware and fitting	Godrej / Haffle/ / Dorma/ Kich
12	Glass	Saint Gobain /Modiguard/Ashahi
13	Antistatic /Vinyl flooring (2mm THK.)	Armstrong /Royal touch
14	Adhesives	Fevicol / Araldite
15	Gypboard False Ceiling	India Gypsum ltd./Arm Strong
16	Patch fitting and floor spring	Dorma /Kich / Haffle/ Godrej
17	Aluminum section	Jindal / Hindalco /Domal
18	Wood Preservative	BISON of BRITISH PAINTS/Asian /Nerolac
19	Vertical/ Venetian /Roller Blinds-Zebra	VISTA LEVOLOR/ HUNTER DOGULAS / MAC
20	Sun Control film	GARWARE
21	Veneer. (4mm and paper veneer) - Group Matched, Straight grain	Century /Green /Marino

22	Block Board.	Greenlam /Century/Marino
23	GI Support System for false ceiling.	Gyproc /Armstrong
24	Plaster Boards .	Gyproc /Lafarge /Arm strong
25	Soft Board.	Jolly Board or approved by Architect
26	Screws.	GKW Nettlefold /TeknicFastners / or as Approved.
27	Floor Spring /Door Closer.	Ozone /Haffle /Godrej
28	Wooden Flooring.	Pergo /Ego /Unitex
29	Writing Board .	White Mark
30	Door Locks.	Ozone /Haffle /Godrej
31	Ceiling Tiles.	Armstrong /Aerolite /Hunter Dogulas

LIST OF APPROVED MAKES OF ELECTRICAL SYSTEM

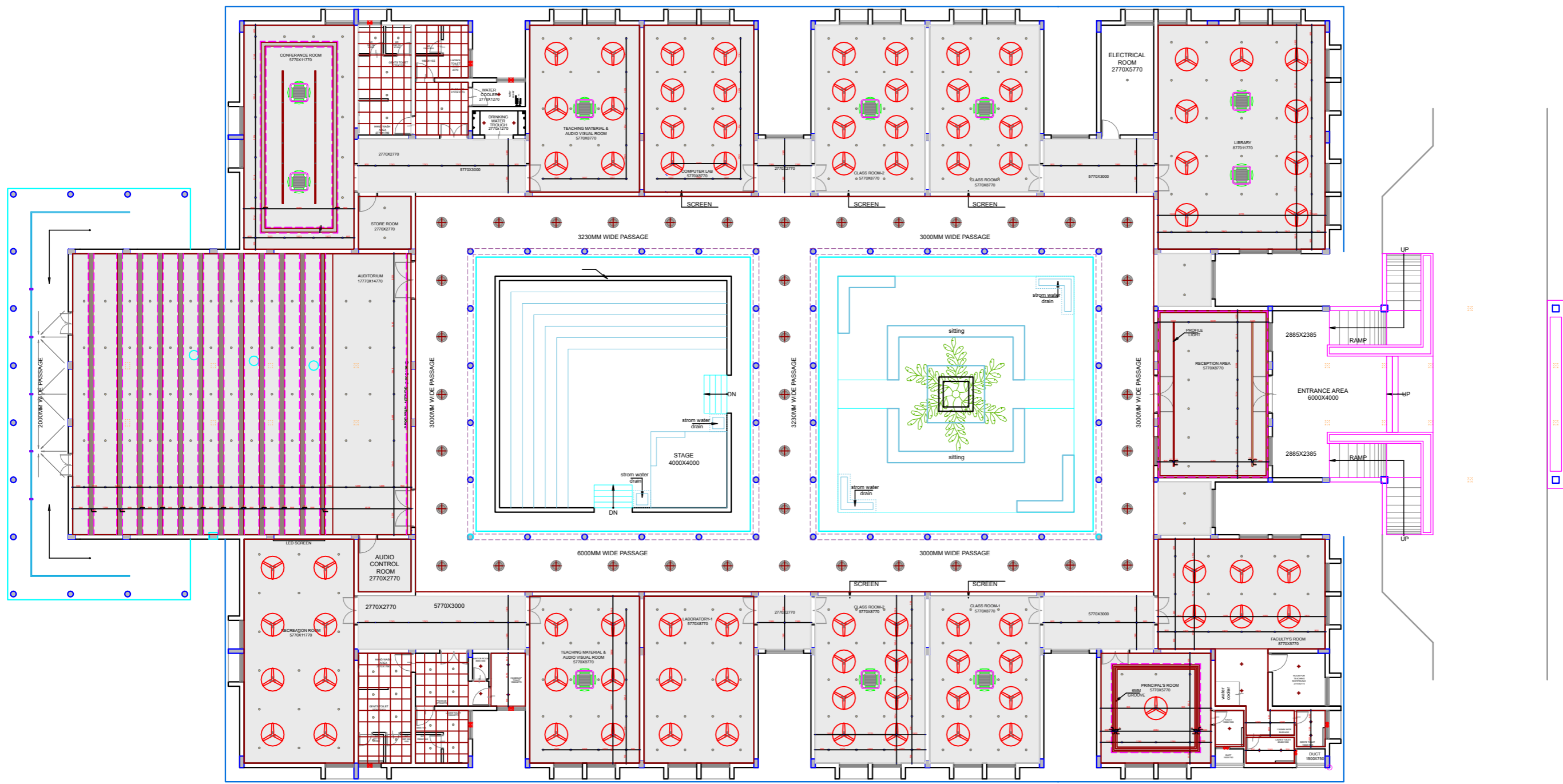
Sr/No.	Item Description	Specified Brand/Make/Manufacturer
1	Rigid PVC Conduit	ISI & FIA approved & manufactured from virgin material. Precision PPI,Polycab,Astral
2	Accessories for conduit	Same make as of pipe.
3	Flexible Copper Wires	FRLS type : KEI, Avocab, Finolex, RR Kabel
4	Switches	MK(blenze),Legrand(Arteor), Havell's(carabtree-Verona), Hager
5	Light Fixture	lighting ways, Bajaj,Phillips, Wipro, Havell's,Lighting Technologies(As suggested by Consultant - Sample to be approved)
6	Ceiling Fans	Bajaj, Havell's
7	Fan box	Cast Iron Type Only
8	Exhaust Fan	Crompton, Almonard, Bajaj, Havell's
9	PVC tape	Steel grip, Anchor
10	Distribution boards	Hager,Legrand (MDS-lexic), Schneider (MG) , L&T Factory fabricated. Double door type

11	MCB/ELMCB &Acc	Legrand (MDS-lexic), Schneider (MG) , L&T, Hager
12	LT Cables	KEI, Avocab, Finolex, Havell's, Polycab
13	Panel Fabricators	CPRI & ISO(A.D. ENTERPRISE, Themis Automation private limited, GMDT Engineering private limited) Approved panel builders only
14	Load Manager / Energy Meter:	Conzerve, Secure, Elmeasure, L&T
15	(Suitable for PC Connected and LAN with open protocol, Sample to be approved)	
16	Meters(Digital : V,A,PF etc)	Conzerve, Secure, Elmeasure, L&T
17	Timer	Theban (Indoasain), Legrand, L&T
18	Relay	Areva, Siemens, L&T, ABB,CSPC, Schnieder
19	MCCB	Legrand, Schneider (MG) , L&T,Hager
20	On Load Changeover	C&S, HPL, Havell's
21	Connectors	ELMEX, Wago
22	SFU - Switch Fuse Unit (Amps - AC 23 duty)	Schneider MG, Siemens, L&T, Havell's (AC 23duty only)
23	HRC Fuses & Fuse-Base	Schneider MG, Siemens, L&T, Havell's
24	M.S. Boxes	Fabricated out of CRCA sheets / Angle / Strip continuously welded (sample to be approved) with Powder coating / Colour coating.
25	Current Transformer	AE, Virat, Narmada
26	Indication Lamp	LED Type : Schneider, Sumo, L&T, RASS
27	Voltage Selecter Switch	L&T, Salzer
28	Ameter Selecter Switch	L&T, Salzer
29	Fabrication	CRCA Sheet -2.0mm Structure, Doors and Frames, Internal partiton 1.6mm, Gland plate-3.0mm
30	Busbar rating	Al- 1.0sqmm=0.8A

31	Power coating	Simens Grey 7tank process
32	APFC Relay	Beluk (Germani), Conzerve, Neptune ducati, L&T, Secure
33	Capacitor	L&T, Conzerv, Shreem, Legrand
34	Glands	Compression type, Heavy duty and deep threding with rubber-ring and double washers. (Sample tobe approved) HMI, Comet
35	Cable Lugs	Dowells, 3-D (Copper long nack)
36	Plug-socket (Metal Clad and Wheather proof)	Legrand, Indoasain, RR PCE, BCH, Schnieder
37	Button holder, Angle holder, ceiling rose	Anchor, CPL
38	Oil cool type Transformer	Voltamp, Crompton, ABB, Vidhyut
39	HT Joint Kit	Raychem, 3M.
40	HT Cable	KEI, Avocab, Havell's, Polycab
41	Cable Tray	Indiana, Dudhat , Neel Enterprise
42	Chemical Type Earthing	OBO, ASHLOK, JSR, AXIS
43	Lightening Surge Protector	OBO, ASHLOK, JSR, AXIS
44	DB Surge Protector	Legrand, Hager, Schnieder, OBO, L&T
45	HT VCB	ABB, Siemens, Schneider, C&S, L&T
46	Power Pack	Gogate / Eq.
47	Thermoplastic Boxes	Hensel, Spelsberg
48	Isolation Transformers	Automatic Electric, Servomax, Aplab
49	Lightning Protection System	ASHLOK, JSR, AXIS, OBO

LIST OF APPROVED MAKES OF LOW VOLTAGE (LV) SYSTEM

Sr/No.	Item Description	Specified Brand/Make/Manufacturer
1	Active Networking	Cisco/Netgear/Aruba
2	Wireless Components	Cisco/Netgear/Aruba
3	Passive Networking	Commscope - Systimax/Panduit/Legrand
4	Network Rack	Netrack/APC/Rittal
5	Analog Telephone	Beetel/Panasonic
6	EPABX System	Cisco/Avaya/NEC
7	CCTV Surveillance System	Tyco/Axis/Bosch
8	Access Control System	Matrix/Suprema/Honeywell
9	Fire Alarm System	Hochiki/Honeywell/System Sensor
10	Speaker	Bosch/Dynacord/Toa
11	Amplifier & Mixer Amplifier	Bosch/Dynacord/Toa
12	Controller	Bosch/Dynacord/Toa
13	Smart interactive panel 75"	HikVision/New line / LG



LEGEND

	SURFACE LIGHT
	PANEL LIGHT
	COVE LIGHT
	PROFILE LIGHT
	HANGING LIGHT (CONE TYPE)

TENDER DRAWING
DATE: 01.30.2026

NOTE - 6mm groove to be provided between wall and the ceiling throughout the ceiling .

REVISION DETAILS :		
REV. NO.	DATE	DESCRIPTION

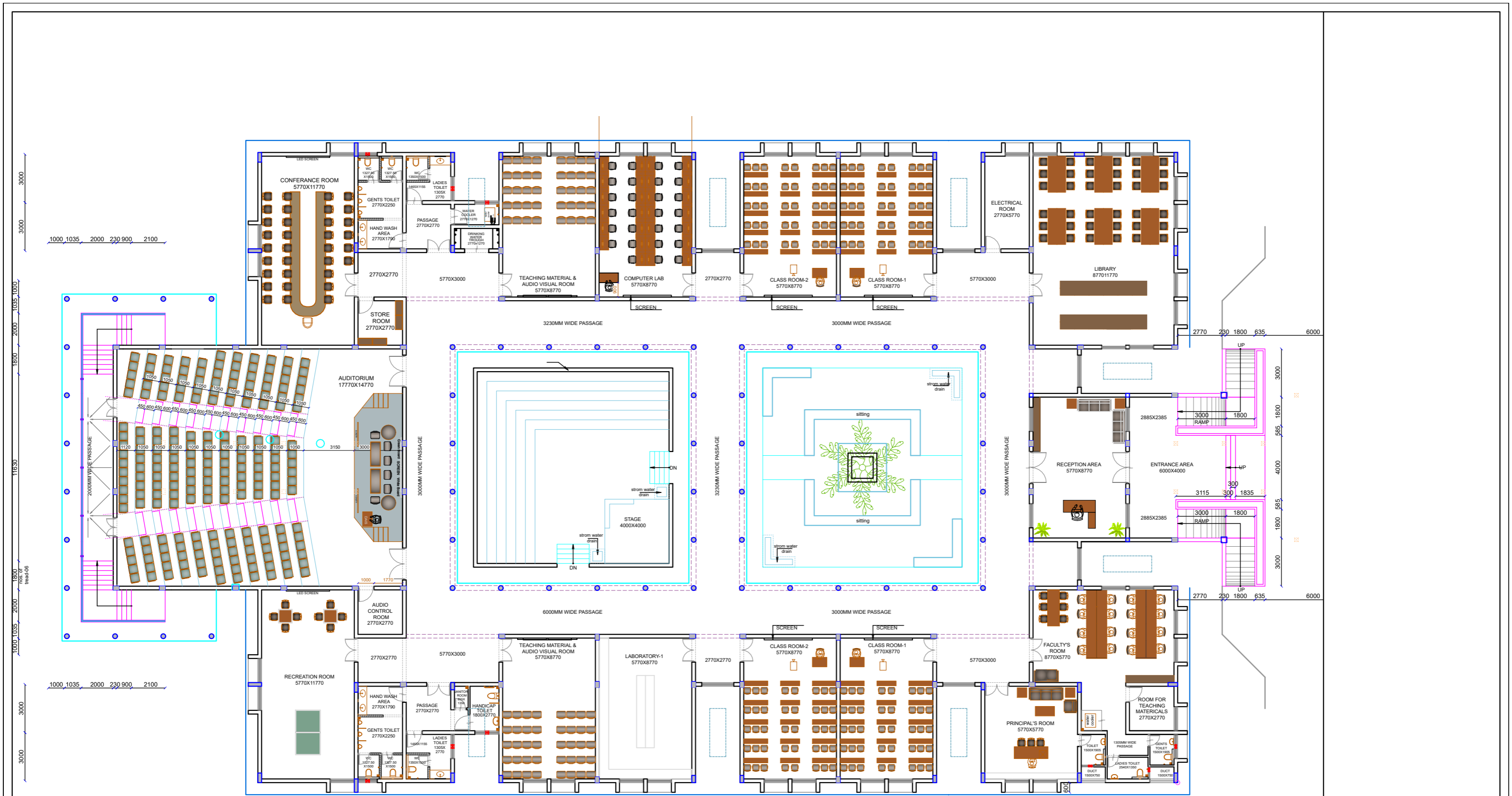


NDDB DAIRY SERVICES
 NDDB HOUSE, CHAUDHARY JHANDU
 SINGH ROAD, NEAR KAMAL CINEMA
 COMPLEX, B4 BLOCK,
 SAFDARJUNG ENCLAVE,
 NEW DELHI - 110029

TORSION
 ENGINEERS & CONSULTANTS
 ARCHITECTURE-STRUCTURE-INTERIOR
 205-207 FORTUNE BUSINESS HUB,
 NR. SHELL PETROL PUMP, SCIENCE CITY ROAD,
 SOLA, AMBEDIKAR, 400055
 CONTACT : +91 8320323935 E.MAIL : vjgator@tortion.com

TITLE:
GROUND FLOOR CEILING

DWG NO.	FR-26-02	NAME OF BUILDING:
DEALT	ZALAK	(23) AI TRAINING CENTER & FARMER TRAINING CENTER
PRJCT. CODE	2401	PROJECT NAME:
CHKD. BY	D.S	FARMER TRAINING CENTER & AI TRAINING CENTER
DATE	24.01.2024	COW SANCTUARY AT TUGLAKPUR MUZAFFARNAGAR, UP.
SCALE	N.T.S	



TENDER DRAWING
 DATE: 01.30.2026



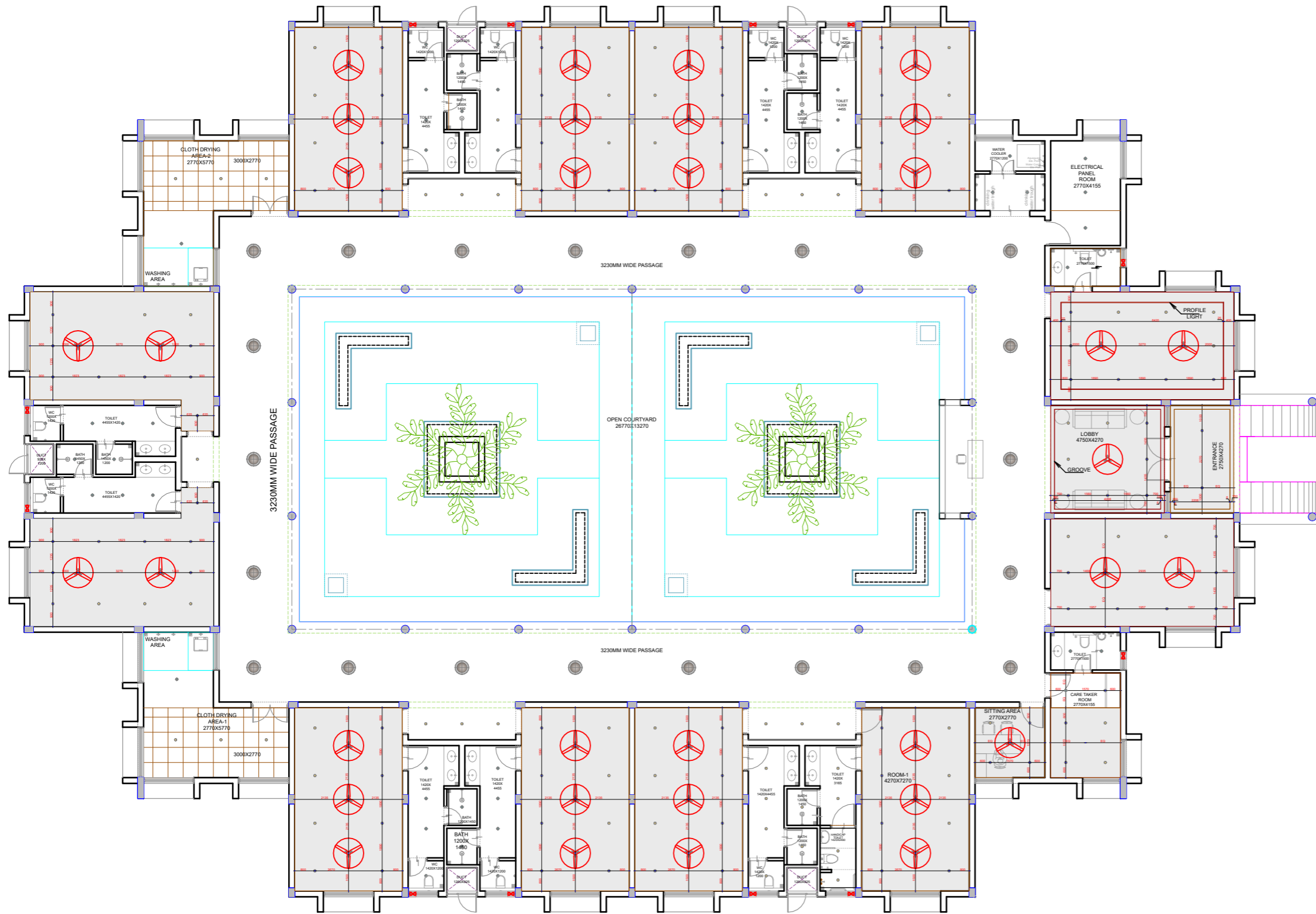
CLIENT:

NDDB DAIRY SERVICES
 NDDB HOUSE, CHAUDHARY JHANDU
 SINGH ROAD, NEAR KAMAL CINEMA
 COMPLEX, B4 BLOCK,
 SAFDARJUNG ENCLAVE,
 NEW DELHI - 110029

TORSION
 ENGINEERS & CONSULTANTS
 ARCHITECTURE-STRUCTURE-INTERIOR
 905/207 FORTUNE BUSINESS HUB,
 NR. SHELL PETROL PUMP, SCIENCE CITY ROAD,
 SOLA, AHMEDABAD-380015
 CONTACT: +91 8320323935 E-MAIL: vtg@torsion.in

TITLE:
GROUND FLOOR PLAN

DWG NO.	FR-26-01	NAME OF BUILDING:	(23) AI TRAINING CENTER & FARMER TRAINING CENTER
DEALT	MUSKAN	PROJECT CODE	2401
CHCKD. BY		PROJECT NAME:	FARMER TRAINING CENTER & AI TRAINING CENTER
DATE	24.01.2024		COW SANCTUARY AT TUGLAKPUR MUZAFFARNAGAR, UP.
SCALE	N.T.S		



LEGEND

	SURFACE LIGHT
	PANEL LIGHT
	PROFILE LIGHT
	HANGING LIGHT (CONE TYPE)

TENDER DRAWING
DATE : 30.01.2026

NOTE - 6mm grove to be provided between wall and the ceiling throughout the ceiling .

REVISION DETAILS :			N W E S
REV. NO.	DATE	DESCRIPTION	

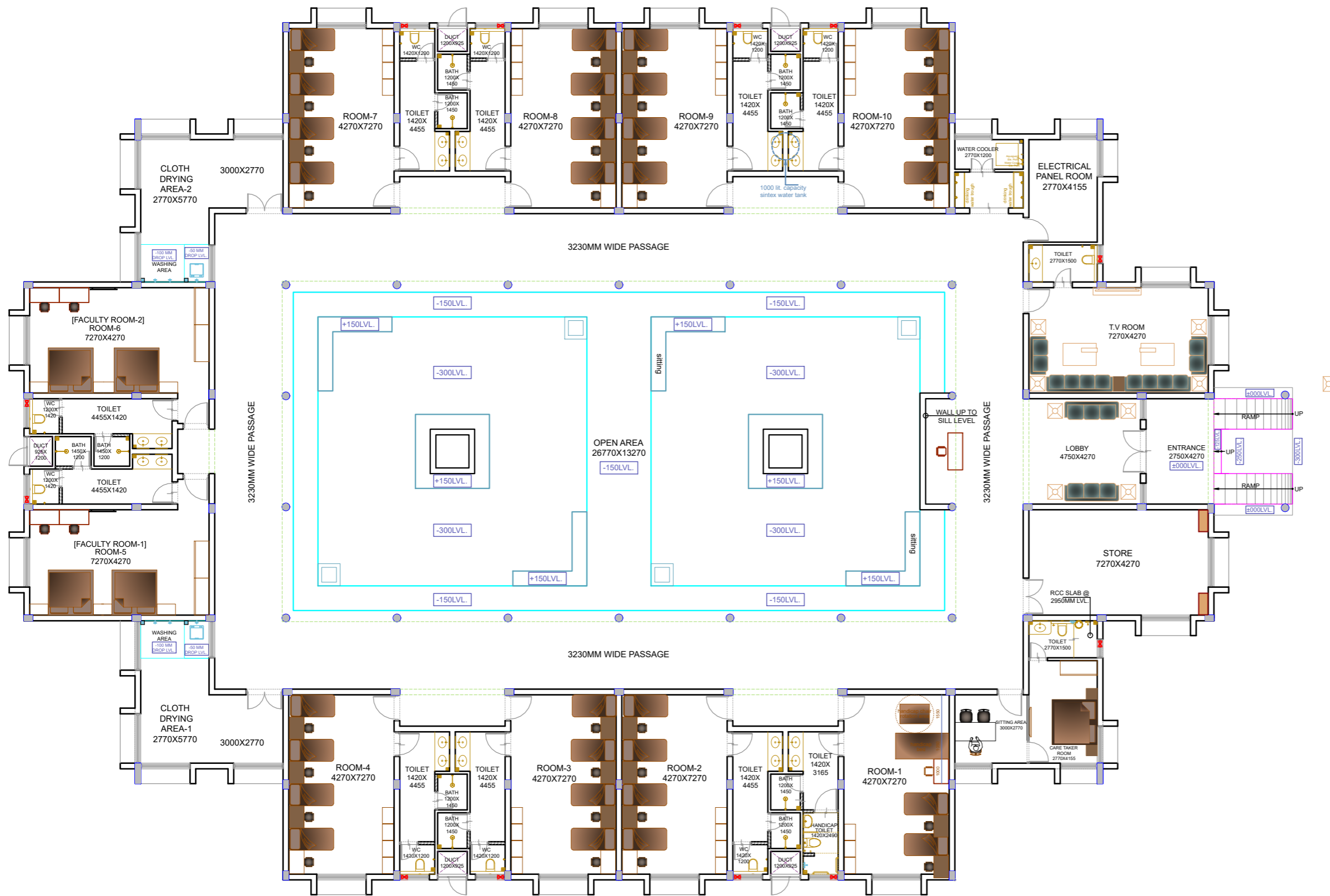
CLIENT:

NDDB DAIRY SERVICES
NDDB HOUSE , CHAUDHARY JHANDU SINGH ROAD , NEAR KAMAL CINEMA COMPLEX , B4 BLOCK , SAFDARJUNG ENCLAVE , NEW DELHI - 110029

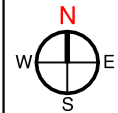
TORSION
ENGINEERS & CONSULTANTS
ARCHITECTURE - STRUCTURE - INTERIOR
906-907, FORTUNE BUSINESS HUB, NR. SHELL PETROL PUMP, SCIENCE CITY ROAD, SOLA, AHMEDABAD-380050.
CONTACT : +91 9320322835 E-MAIL : vgstorsion@yahoo.co.in

TITLE:
GROUND FLOOR PLAN CEILING

DWG NO.	FR-27-02-	NAME OF BUILDING:-
DEALT	ZALAK	[27] HOSTEL BUILDING
PRJCT. CODE	2401	[NOS. FOR ROOM-10]
CHCKD. BY		PROJECT NAME:
DATE	24.01.2024	FARMER TRAINING CENTER & AI TRAINING CENTER
SCALE	N.T.S	COW SANCTUARY AT TUGLAKPUR MUZAFFARNAGAR, UP.



TENDER DRAWING
DATE : 30.01.2026



CLIENT:



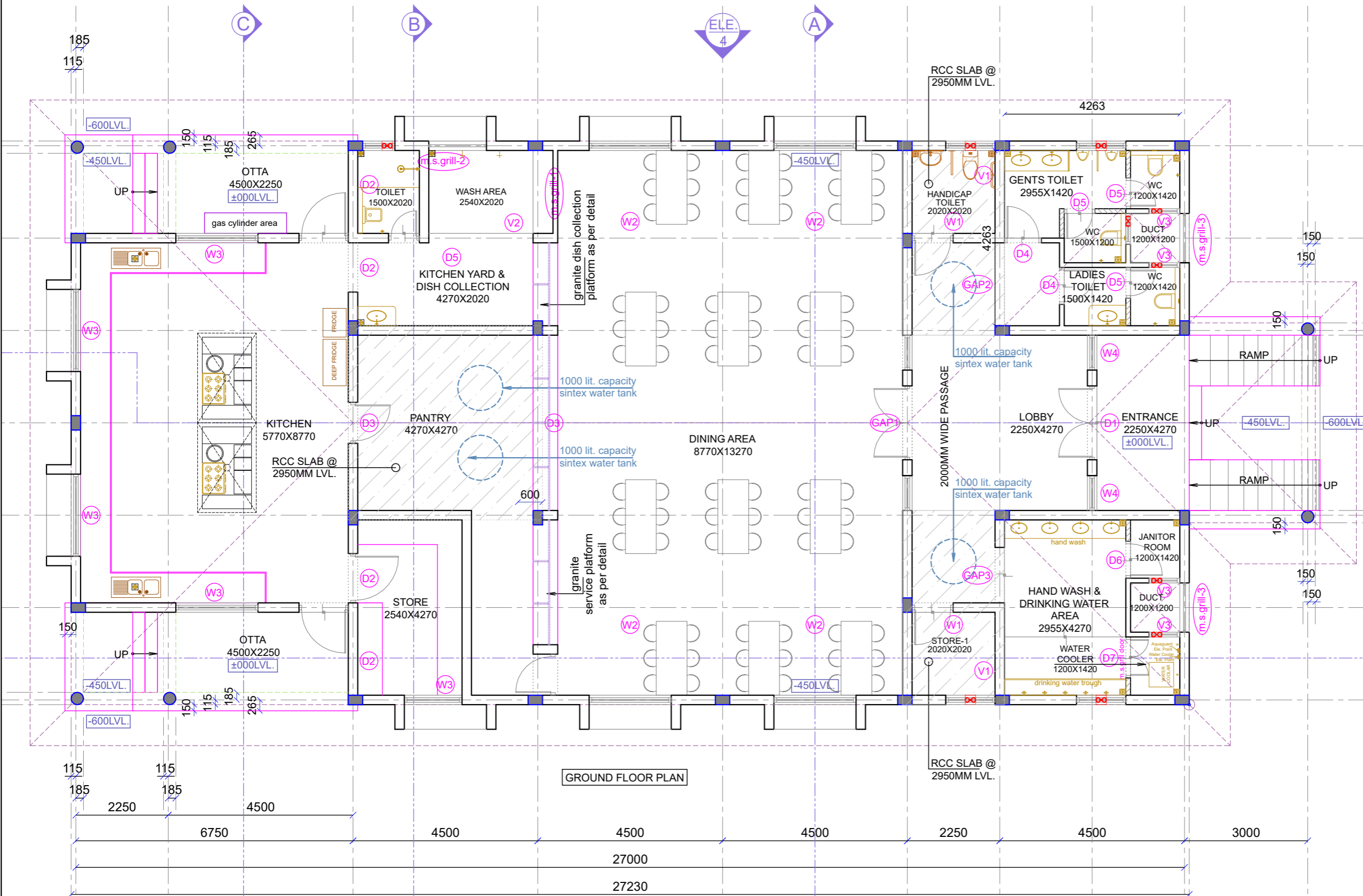
NDD DAIRY SERVICES
NDDB HOUSE , CHAUDHARY JHANDU
SINGH ROAD , NEAR KAMAL CINEMA
COMPLEX , B4 BLOCK ,
SAFDARJUNG ENCLAVE ,
NEW DELHI - 110029



TORSION
ENGINEERS & CONSULTANTS
ARCHITECTURE-STRUCTURE-INTERIOR
906-907, FORTUNE BUSINESS HUB,
NR. SHELL PETROL PUMP, SCIENCE CITY ROAD,
SOLA, AHMEDABAD-380060.
CONTACT : +91 9320322835 E-MAIL: vjg@torsion@yahoo.co.in

TITLE:
GROUND FLOOR PLAN

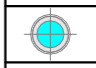
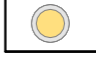
DWG NO.	FR-27-01	NAME OF BUILDING:- [27] HOSTEL BUILDING [NOS. FOR ROOM-10]
DEALT	MUSKAN	
PRJCT. CODE	2401	PROJECT NAME: FARMER TRAINING CENTER & AI TRAINING CENTER, COW SANCTUARY AT TUGLAKPUR MUZAFFARNAGAR, UP.
CHKD. BY		
DATE	24.01.2024	
SCALE	N.T.S	

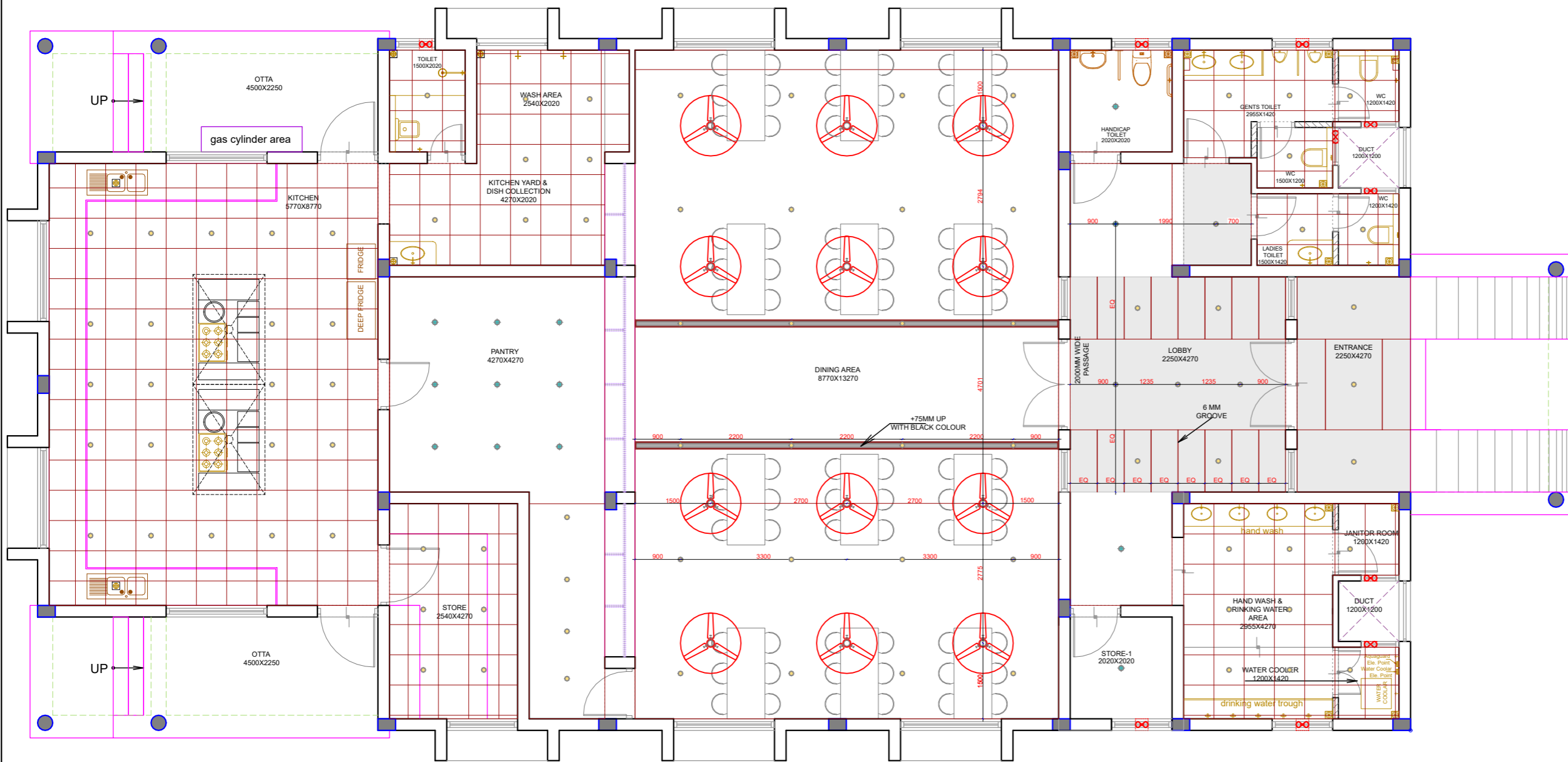


GROUND FLOOR PLAN

<p>TENDER DRAWING DATE : 30.01.2026</p>		
<p>CLIENT:</p>		
		<p>NDDB DAIRY SERVICES NDDB HOUSE, CHAUDHARY JHANDU SINGH ROAD, NEAR KAMAL CINEMA COMPLEX, B4 BLOCK, SAFDARJUNG ENCLAVE, NEW DELHI - 110029</p>
		<p>TORSION ENGINEERS & CONSULTANTS ARCHITECTURE-STRUCTURE-INTERIOR 906-907, FORTUNE BUSINESS HUB, NR. SHELL PETROL PUMP, SCIENCE CITY ROAD, SC/1A, AHMEDABAD-380006. CONTACT: +91 8320322835 E-MAIL: vjgstonion@yahoo.co.in</p>
<p>TITLE: GROUND FLOOR PLAN</p>		
DWG NO.	FR-28-01	NAME OF BUILDING:- [28] CANTEEN BUILDING
DEALT	MUSKAN	
PRJCT. CODE	2401	PROJECT NAME: FARMER TRAINING CENTER & AI TRAINING CENTER COW SANCTUARY AT TUGLAKPUR MUZZAFFARNAGAR, UP.
CHCKD. BY		
DATE	24.01.2024	
SCALE	N.T.S	

LEGEND

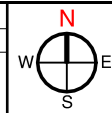
	SURFACE LIGHT
	PANEL LIGHT



TENDER DRAWING
DATE : 30.01.2026

NOTE - 6mm groove to be provided
between wall and the ceiling
throughout the ceiling .

REVISION DETAILS :		
REV. NO.	DATE	DESCRIPTION



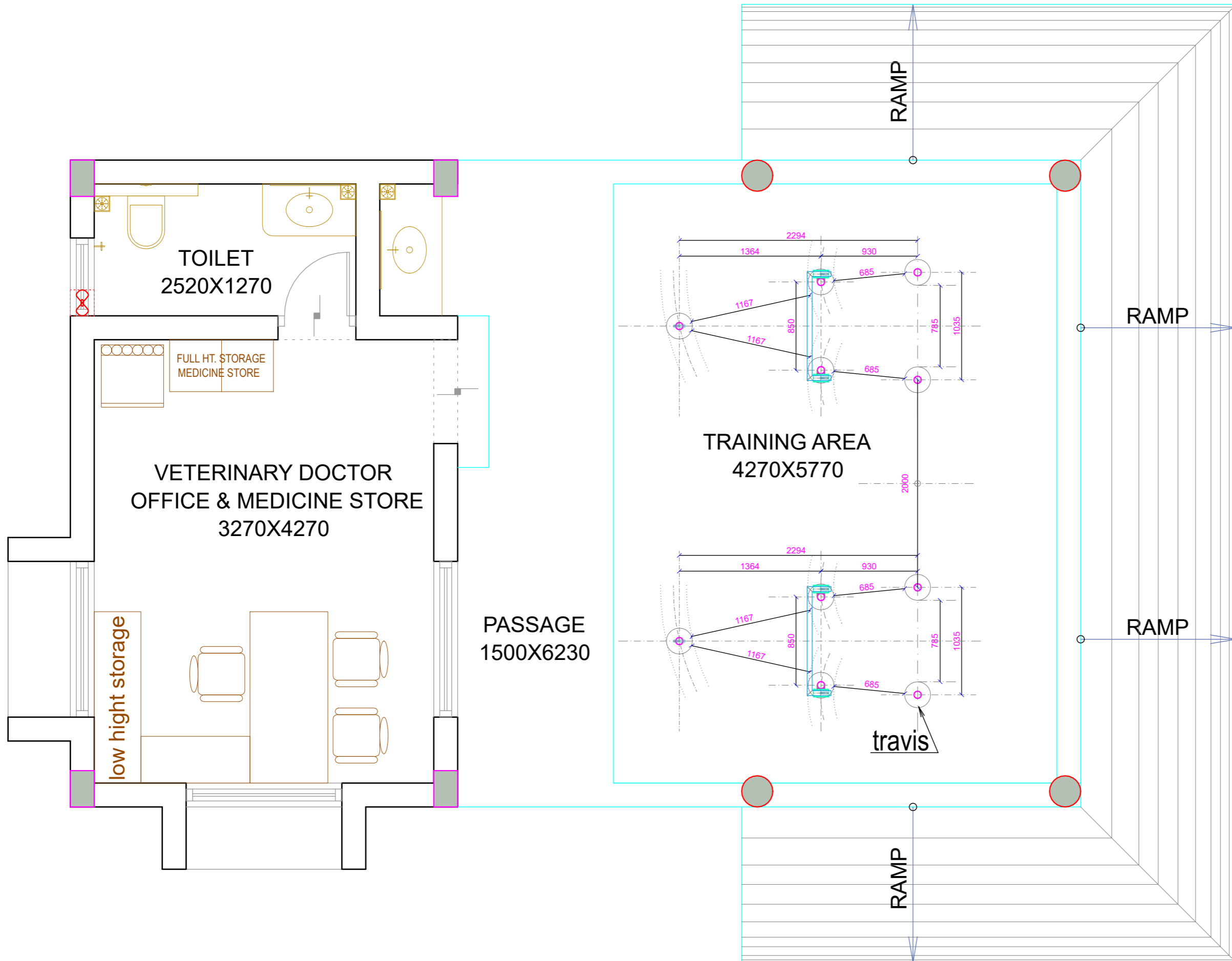
CLIENT:

NDDB DAIRY SERVICES
NDDB HOUSE, CHAUDHARY JHANDU
SINGH ROAD, NEAR KAMAL CINEMA
COMPLEX, B4 BLOCK,
SAFDARJUNG ENCLAVE,
NEW DELHI - 110029

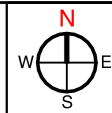
TORSION
ENGINEERS & CONSULTANTS
ARCHITECTURE-STRUCTURE-INTERIOR
906-907, FORTUNE BUSINESS HUB,
NR. SHELL PETROL PUMP, SCIENCE CITY ROAD,
SCLA, AHMEDABAD-380006.
CONTACT: +91 8320322835 E-MAIL: vgstorsion@yahoo.co.in

TITLE: GROUND FLOOR CEILING

DWG NO.	FR-28-02	NAME OF BUILDING:-	[28] CANTEEN BUILDING
DEALT	ZALAK		
PRJCT. CODE	2401	PROJECT NAME:	FARMER TRAINING CENTER & AI TRAINING CENTER
CHCKD. BY			COW SANCTUARY AT TUGLAKPUR MUZAFFARNAGAR, UP.
DATE	24.01.2024		
SCALE	N.T.S		



TENDER DRAWING
DATE : 30.01.2026

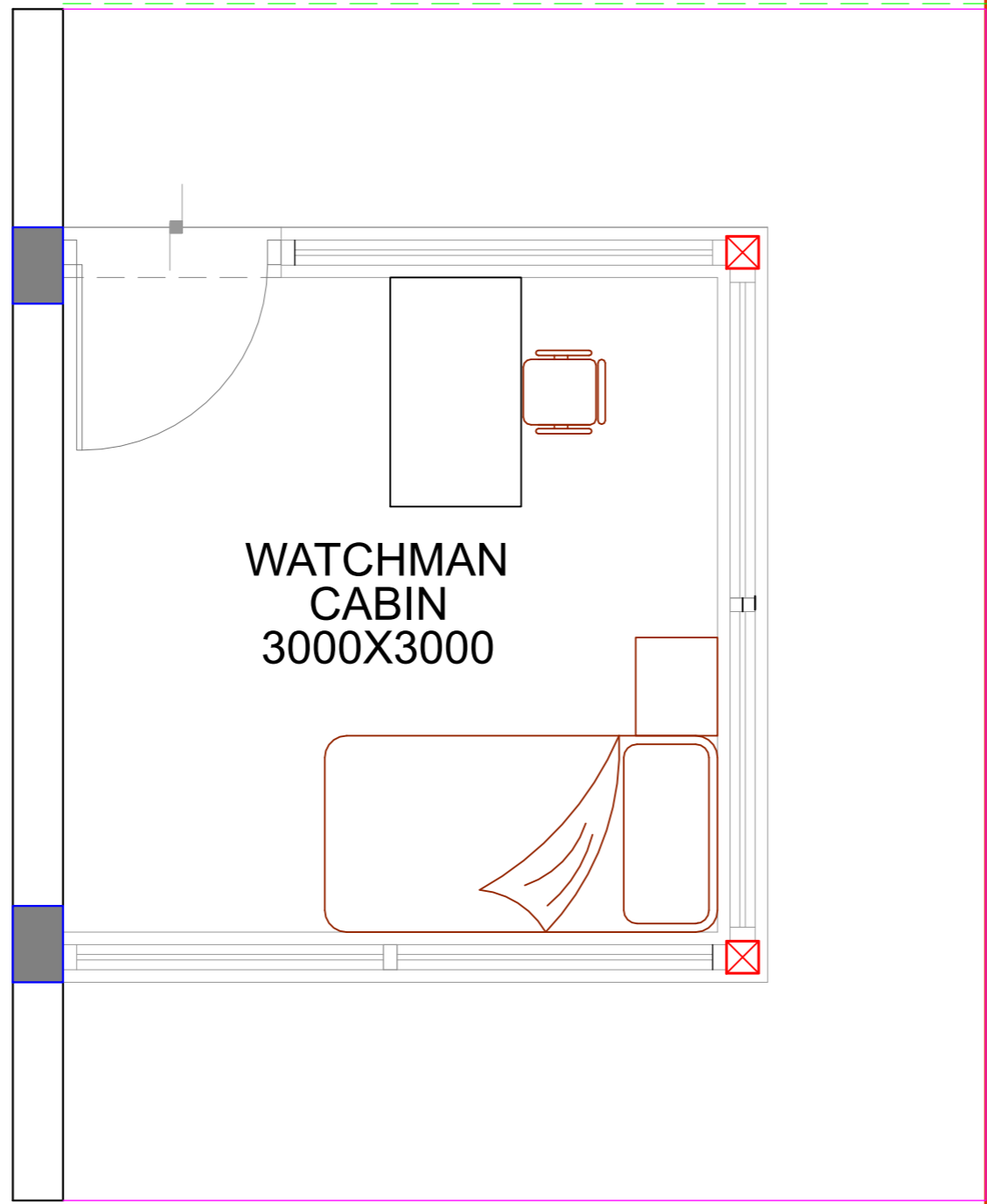


CLIENT:
NDDB DAIRY SERVICES
NDDB HOUSE, CHAUDHARY JHANDU
SINGH ROAD, NEAR KAMAL CINEMA
COMPLEX, B4 BLOCK,
SAFDARJUNG ENCLAVE,
NEW DELHI - 110029

TORSION
ENGINEERS & CONSULTANTS
ARCHITECTURE-STRUCTURE-INTERIOR
906-907, FORTUNE BUSINESS HUB,
NR. SHELL PETROL PUMP, SCIENCE CITY ROAD,
SCLA, AHMEDABAD-380006.
CONTACT: +91 8320322835 E-MAIL: vgstorsion@yahoo.co.in

TITLE: GROUND FLOOR PLAN, ELEVATION : 1, 2, 3

DWG NO.	FR-29-01	NAME OF BUILDING:-	[29] TRAINING SHED FOR TRAINEES
DEALT	MUSKAN	PROJECT NAME:	FARMER TRAINING CENTER & AI TRAINING CENTER, COW SANCTUARY AT TUGLAKPUR MUZAFFARNAGAR, UP.
PRJCT. CODE	2401	CHCKD. BY	
DATE	24.01.2024	SCALE	N.T.S



WATCHMAN
CABIN
3000X3000

TENDER DRAWING
DATE : 30.01.2026



CLIENT:

NDDB DAIRY SERVICES
NDDB HOUSE , CHAUDHARY JHANDU
SINGH ROAD , NEAR KAMAL CINEMA
COMPLEX , B4 BLOCK ,
SAFDARJUNG ENCLAVE ,
NEW DELHI - 110029

TORSION
ENGINEERS & CONSULTANTS
ARCHITECTURE-STRUCTURE-INTERIOR
906-907, FORTUNE BUSINESS HUB,
NR. SHELL PETROL PUMP, SCIENCE CITY ROAD,
SCLA, AHMEDABAD-380006
CONTACT: +91 8320322835 E-MAIL: vjgatorion@yahoo.co.in

TITLE: GROUND FLOOR PLAN , ELEVATION : 1 , 2 , 3

DWG NO.	FR-32-01	NAME OF BUILDING:-
DEALT	ZALAK	[29] TRAINING SHED FOR TRAINEES
PRJCT. CODE	2401	PROJECT NAME:
CHCKD. BY		FARMER TRAINING CENTER & AI TRAINING CENTER
DATE	24.01.2024	COW SANCTUARY AT TUGLAKPUR MUZAFFARNAGAR, UP.
SCALE	N.T.S	