

**TENDER DOCUMENT**

**Set up Interior Work Artificial Inseminator Training Centre at Cow Sanctuary  
Muzaffarnagar Uttar Pradesh**

NDS/COW\_SANCTURY/MUZAFFARNAGAR/FURNITURE/MAY/26-27

**Issued by**

**NDDB Dairy Services**



**POINTS BIDDERS SHOULD BEAR IN MIND**

- 1) BIDS CONTAINING DEVIATIONS FROM BIDDING DOCUMENT TERMS AND OTHER REQUIREMENTS MAY BE REJECTED.
- 2) BIDS UPLOADED WITHOUT SUBMISSION OF EARNEST MONEY DEPOSIT **(if applicable)** SHALL BE SUMMARILY REJECTED.
- 3) NEGLIGENCE OF THE BIDDER IN PREPARING TENDER BID CONFERS NO RIGHT TO WITHDRAW THE BID AFTER IT WAS OPENED.
- 4) THE BID, ALONGWITH ENCLOSURES SHOULD BE IN ENGLISH ONLY.
- 5) THE BIDDING DOCUMENTS SHALL BE GOVERNED AND INTERPRETED ACCORDING TO THE LAWS OF THE UNION OF INDIA.
- 6) NDDDB Dairy Services RESERVES THE RIGHT TO ACCEPT OR REJECT ANY OR ALL BIDS WITHOUT ANY EXPLANATION TO BIDDERS.

### **CHECK LIST**

- |           |  |        |
|-----------|--|--------|
| <b>1.</b> | Have you submitted the original EMD to NCDFI on or before the date & time mentioned in the bid document?                       | Yes/No |
| <b>2.</b> | Have you quoted Bid prices?  | Yes/No |
| <b>3.</b> | Have you uploaded the Form of Bid?   | Yes/No |
| <b>4.</b> | Have you uploaded the duly digitally signed/signed documents completed in all respect?   | Yes/No |
| <b>5.</b> | Have you noted the Service Period mentioned in the bid ?   | Yes/No |
| <b>6.</b> | Have you kept your offer valid for 120 days?   | Yes/No |
| <b>7.</b> | Have you furnished copies of your PAN, GST Reg. No., PF Registration No. etc. (as per statutory requirement of above services) | Yes/No |
| <b>8.</b> | Have you uploaded the Statements of Deviations (Preferably Nil) (  | Yes/No |

### Index

Particulars	Page No
Initiation to Bids	5-6
Instruction to bidder	7-26
Compliances	27
Technical Specification	28-88
Approved Make & Models	89-93
Drawing	94-101

### Invitation of Bids:

**Tender Reference: NDS/COW\_SANCTURY/MUZAFFARNAGAR/FURNITURE/MAY/26-27** Execution of Interior Works at Artificial Insemination Training Centre, Cow Sanctuary, Muzaffarnagar FURNITURE WORK

<b>Bid Ref:</b>	NDS/COW_SANCTURY/MUZAFFARNAGAR/FURNITURE/MAY/26-27
<b>Description</b>	Execution of Interior Works at Artificial Insemination Training Centre, Cow Sanctuary Muzaffarnagar
<b>Estimated Cost</b>	1.15 Crores
<b>EMD</b>	<p>Rs. 1.0 Lakh</p> <p>Bidders are requested to deposit the Earnest Money Deposit (EMD) directly into their respective Escrow Accounts provided by NCDFI. The Escrow account details can be accessed through the registration portal (Link: <a href="https://registration.ncdfimarket.com/">https://registration.ncdfimarket.com/</a>).</p> <p>After depositing the EMD, please confirm the same by emailing <a href="mailto:etenders@ncdfimarket.com">etenders@ncdfimarket.com</a>, along with the UTR details and the relevant tender reference against which the EMD has been deposited.</p> <p>For any clarification or support regarding the Escrow account, you may contact Janvi Patel – 9978603225</p> <p>After the successful completion of the contract, NCDFI will deduct TC (Transaction charges) at 0.4 % (+ 18% GST) and TDS under section 194 (O) at 0.1 % of the Trade Value from the EMD/SD.</p>
<b>Bid Start Date</b>	18 May 2026
<b>Pre-bid meeting</b>	For any queries related to the pre-bid, vendors may contact at <a href="mailto:samar.rehman@nddbdairyservices.com">samar.rehman@nddbdairyservices.com</a> on or before 18 Feb 2026.
<b>Sale of bid End Date</b>	18 May 2026 3:00 pm
<b>Last Date &amp; Time of Submission of bid</b>	15:00 hr on 08 June 2026
<b>Bid Opening</b>	15:30 hr on 8 June 2026
<b>Delivery Period</b>	Within 45 days from date of receipt of PO
<b>Delivery Location</b>	Tuglakapur village Block Purkaji Cow Sanctuary Muzaffarnagar UP
<b>Evaluation of offer</b>	Overall Basis
<b>Payment Terms:</b>	<p>Payment shall be made in two stages:</p> <ol style="list-style-type: none"> <li>1. <b>70%</b> of the total order value shall be released against the supply of goods, subject to submission of the invoice and satisfactory receipt of materials.</li> </ol>

	2. The remaining <b>30%</b> shall be released after successful installation, testing, and commissioning of the supplied goods, along with submission of the final invoice.
--	--

## **Instructions to Bidder**

### **1.1 The bidders must meet the following minimum qualifying criteria:**

- 1. Experience of having successfully completed Interior & Furniture work for any state govt., central govt., and any other Govt./Semi Govt. Organization or Renowned non Govt Organizations :**
  - a) Three similar works, each costing not less than the amount equal to 20% of the probable amount of contract during the last 3 financial years;  
OR
  - b) Two similar works, each costing not less than the amount equal to 30% of the probable amount of contract during the last 3 financial years;  
OR
  - c) one similar work of aggregate cost not less than the amount equal to 40% of the probable amount of contract in any one financial year during the last 3 financial years;
- 2. Average annual turnover on the Interior & furniture works not less than 50% of the probable amount of contract during the last 03 financial years. Audited Balance sheet & Profit & Loss of Last 03 year duly Signed by CA with valid UDIN number to be submitted.**
- 3. Manufacturer/Bidder should be submitted PAN, GSTIN, Company Registration, ESIC, EPF, Factory/Manufacturing plant license.**
- 4. The furniture items that have to be supplied as per tender should be of Reputed Brand only bearing Quality and important approvals certificates relevant to Furniture of product.**
- 5. The firm/contractor shall supply samples/mock up of fabricated items / loose/fixed furniture items at no extra cost for any/all items as per the scheme/specifications submitted by the Architects/as called for the approval when called for submission of bids. The samples rejected or not found acceptable shall be returned. No additional cost for loading unloading transportation and handling shall be paid for the samples. The approved samples shall be retained till the completion of the supplies.**
- 6. Works/supplies may be awarded to one or more vendors depending on the samples supplied and approved, specialization of the agency and capability of the firm at the sole discretion of the **NDS** and no claims on any such account would be entertained.**
- 7. The bidder must submit Valid certificates of the make mentioned in the tender document and for which they are quoting at the time of supply for modular furniture.**
- 8. The bidder must have experience of minimum 3 years in successful completion of similar work of nature and complexity comparable to the proposed contract ending last day of month previous to the one in which applications are invited.**
  - i. Copy of the Income Tax Returns for three previous years for income tax purpose.  
Audited financials including cash flow statement for last 3 financial years.
  - b) Even though the bidder's meet the specified criteria, it may be disqualified if it has:
    - i. Made untrue or false declaration in the forms, statements and attachments submitted

in proof of their qualification

ii. Poor documented record based on the feedback from other milk producer organizations from their own experience in the delivery, installation, performance, service and also in abandoning the works, not properly completing the contract, inordinate delays, or financial failure etc.

iii. If the bidder is overbooked beyond his capacity to execute the work as per required schedules.

## **1.2 Eligible Bidders**

This invitation for Bids is open to all suppliers who have downloaded this bidding document in their name and meet the minimum eligibility criteria, if any, specified in this bidding document.

## **1.3 Bidding Document**

The fee/cost for bidding document is NIL.

The Bidder shall bear all costs associated with the preparation and submission of its bid, and the NDDB Dairy Services hereinafter referred to as "Procuring Agency", will in no case be responsible or liable for those costs, regardless of the conduct or outcome of the bidding process. Interested eligible bidders may obtain further information from Manager (Procuring Agency) Sh. Samar Rehman, Address ***NDDB House, Safdarjung Enclave, New Delhi, Southwest Delhi, Delhi, 110029***  
***011-4988300/49883088/***

## **Downloading the Document**

- The bid documents will be available in the website at <https://www.ncdfiemarket.com/> and can be downloaded and used as tender documents for uploading the offer.
- It is hereby brought to the notice of all bidders that if any change/additions/deletions/alterations are found to be made by them in the tender and the same is subsequently noticed at any stage, even after award of the contract, the bidders are liable for all consequences thereof and NDDB Dairy Services (NDS) shall be free to take suitable action as deemed necessary.

## **1.4 Content of Bidding Documents**

The services required, bidding procedures and contract terms are prescribed in the Bidding Documents.

The Bidder is expected to examine all instructions, forms, terms and specifications in the Bidding Documents. Failure to furnish all information required by the Bidding Documents or submission of a bid not substantially responsive to the Bidding Documents in every respect will be at the Bidder's risk and may result in the rejection of its bid.

### **Clarification of Bidding Documents**

A prospective Bidder requiring any clarification of the Bidding Documents may notify the NDS in writing/fax/telex/email at the NDS's mailing address indicated in the Invitation for Bids. The Procuring Agency will respond in writing to any request for clarification of the Bidding Documents, which it receives not later than 7 days prior to the deadline for the submission of bids prescribed by the Procuring Agency. If required, written copies of the Procuring Agency's response (including an explanation of the query but without identifying the source of inquiry) will be uploaded in the websites mentioned.

## **1.5 Amendment of Bidding Documents**

At any time prior to the deadline for the submission of bids, the NDS may for any reason whether at its own initiative or in response to a clarification requested by a prospective bidder, modify the bidding document by the issuance of amendment.

The amendment will be uploaded on NDS/NCDFI website. Before submission of the bid, the bidder should check the NDS/NCDFI website for any Corrigendum/additional information on the bidding document, if any.

The amendment will be also uploaded on NCDFI's website. Before submission of the bid, the bidder should check the NCDFI's website for any Corrigendum/additional information on the bidding document, if any

However, non-information in changes/amendments put on website as Corrigendum to the prospective bidders shall not bind the NDS to extend the deadline for the submission of the bids and non-compliance to such Corrigendum by the bidder shall result to non-responsiveness of the bid leading to rejection.

## **1.6 Preparation of Bid.**

The Bid prepared by the Bidder and all correspondence and documents relating to the bid exchanged by the Bidder and the Procuring Agency, shall be written in the English language

## **1.7 Documents comprising the bid**

The Bid prepared by the Bidder shall comprise the following documents:

- a. A complete description of Services the Bidder to provide and a price schedule completed in accordance with clause
- b. Earnest Money Deposit in accordance
- c. Documentary evidence establishing bidder's eligibility and qualifications
- d. Documentary evidence establishing eligibility and conformity of services
- e. A price schedule completed in all respect.
- f. Even though the applicants meet the above criteria, they are subject to be disqualified if they have:
  - i. Made untrue or false representations in the forms, statements and attachments submitted in proof of the qualification requirements; and or,
  - ii. Poor documented record based on the feedback from other milk producer organizations from their own experience in the delivery, installation, performance, service and also in abandoning the works, not properly completing the contract, inordinate delays, or financial failure etc.
  - iii. Notwithstanding anything stated above, the Procuring Agency reserves the right to assess the Bidders capabilities and capacity to execute the contract satisfactorily before deciding on award.

Any exceptions the Bidder wishes to take in any aspect of the bidding document or payment schedule including a justification for the exception in the format furnished in **Error! Reference source not found.**

### **1.8 Bid Form**

- a. The Bidder shall complete the Bid Form furnished in the Bidding Documents and upload the same on the e-portal submit the same along with technical bid.
- b. All the required document duly signed/digitally signed should be uploaded on or before the specified date and time at NCDFI website.

### **1.9 Bid Submission:**

- a. The Bidder shall fill up the Technical and Price Bid at NCDFI Portal mentioning the final prices of the services under the Contract. Bidders must submit a bid for the full quantity specified under Scope of work, failing which,

such bids will not be considered for evaluation and comparison and will not be considered for award.

b. The Bidder shall quote their prices in NCDFI E-Portal only

**1.10 Bid Currencies**

For a service covered in this Bidding Document, prices shall be quoted in Indian Rupees only.

**1.11 Documents Establishing Bidders' Eligibility and Qualifications**

- a. Bidder shall furnish, as part of its bid, documents establishing the Bidder's eligibility to bid and its qualifications to perform the Contract if its bid is accepted.
- b. The documentary evidence of the Bidder's eligibility to bid shall establish to the Procuring Agency's satisfaction that the Bidder, at the time of submission of its bid is eligible to bid as defined under Section 2.
- c. The documentary evidence of the Bidder's qualifications to perform the Contract if its bid is accepted, shall establish to the Procuring Agency's satisfaction:
- d. That the Bidder has the financial and technical capability necessary to perform the Contract and meet the minimum qualifying criteria specified at Section 2. To this end, all bids submitted shall include the following information:
  - e. Copies of original documents defining the constitution or legal status, place of registration and principal place of business of the company or firm or partnership etc.
  - f. Details of experience and past performance of the bidder on the contract's similar nature within the last 3 years and details of current contracts in hand and other commitments.
  - g. Bidders shall invariably furnish documentary evidence (Client's certificate) in support of the satisfactory completion of the services provided.
  - h. Qualification and experience of key personnel for successful execution of the contract;
  - i. Reports on financial standing of the Bidder such as profit and loss statements, balance sheets and auditor's report of the past three years etc.;
  - j. Information regarding any current litigation in which the Bidder is involved.

Bidders who meet the criteria given above are subject to

be disqualified, if they have made untrue or false representation in the forms, statements and attachments submitted in proof of the qualification requirements or have record of poor performance such as abandoning the work, not properly completing the contract etc.

**1.12 Documents Establishing Eligibility and Conformity to Bidding documents**

- a. Bidder shall furnish, as part of its bid, documents establishing the eligibility and conformity to the Bidding Documents for all services, which the Bidder proposes to provide under the Contract.
- b. The documentary evidence of the services conformity to the Bidding Documents may be in the form of literature, drawing and data, and shall furnish:
- c. A statement of deviations and exceptions to the scope of work in the format furnished in the bidding document (Section VII (A)- Technical Deviation Statement Form and commercial Deviation Statement Form).

**1.13 Earnest Money Deposit (EMD)**

The payment should be made on or before **12:00 PM** on the date of submission of bids. Tenderer must submit an EMD of Rs. 1,00,000 (Rupees One Lakh only) in the format of e-payment irrespective of the items quoted i.e. schedule wise EMD amount as mentioned in the document will not be considered. Without EMD, the tender will be summarily rejected.

- ii) Payment of Earnest Money by cheque, T.D.R and F.D.R. will not be accepted.

**iii) Transaction Fees and TDS:**

- a) As the bidding is processed through the NCDFI Portal, the awardee vendor must pay:
  - i. **Transaction Fee - 0.40%** of the contract value (+ applicable GST).
  - ii. **TDS u/s 194/O - 0.10%** of the contract value.
- b) Payment must be made within two working days of contract award.
- c) Any adjustments in transaction fees and TDS based on the final contract value must be paid promptly or will be adjusted against the EMD amount deposited.

For EMD payment made (RTGS/NEFT), the bidder is requested to send the communication by 12.30 PM on the date of submission of bids in following format through e-mail to [etenders@ncdfimarket.com](mailto:etenders@ncdfimarket.com). The bidder is also required to submit/upload the successful transaction details along with technical bid.

#### **1.14 The EMD may be forfeited:**

- a) If a bidder withdraws or modifies its bid during the period of bid validity
- OR**
- b) In the case of the successful bidder, if the bidder fails to sign the Contract (i.e., return the signed copy of duplicate Purchase Order, and furnish Performance Security, if asked for)

Unsuccessful bidder's bid security will be discharged / returned as promptly as possible but not later than 30 days after the expiration of the period of the bid validity of 120 days from the date of bid opening. The successful Bidder's EMD will be discharged upon the Bidders executing the Contract i.e., return the signed copy of duplicate Purchase Order, and furnish the Performance Security, if asked for.

- c) Pursuant to Clause No.1.9 the Bidder shall furnish, as part of its bid, EMD as specified in the Schedule of Requirements.
- d) The EMD security is required to protect the Procuring Agency against the risk of Bidder's conduct, which would warrant the security's forfeiture.
- e) The EMD shall be denominated in Indian Rupees only, and shall be in one of the following forms:
- f) A Demand Draft in favor of NCDFI, payable at as given above from any Nationalized Bank / Scheduled Bank / Foreign Banks having branches in India.
- g) Any bid not accompanied with EMD will be rejected by the Procuring Agency as non- responsive.
- h) Unsuccessful Bidder's EMD will be discharged/returned as promptly as possible but not later than 30 days after the expiration of the period of bid validity prescribed by the Procuring Agency, pursuant to Clause 2.16.
- i) The successful Bidder's EMD will be discharged upon the Bidders executing the Contract and furnishing the performance security.
- j) The EMD may be forfeited: If a Bidder withdraws or modifies its bid during the period of bid validity specified by the Bidder on the Bid Form; or
- k) In the case of these successful Bidder, if the Bidder fails:
  - a. To sign the undertaking and contract in accordance with Clause 2.31;

And

  - b. To furnish performance security in accordance with Clause 2.36.

#### **1.15 Period of Validity of Bids**

- a. Bids shall remain valid for 120 days after the date of bid opening prescribed by the Procuring Agency. A bid valid for

a shorter period shall be rejected by the Procuring Agency as non-responsive.

- b. In exceptional circumstance, the Procuring Agency may prior to the expiry of initial validity period solicit the Bidder's consent to an extension of the period of validity. The request and the responses thereto shall be made in writing (or by cable or telex or fax). The EMD provided under Clause 15 shall also be suitably extended. A Bidder may refuse the request without forfeiting its EMD. A Bidder granting the request will not be required nor permitted to modify its bid.

#### **1.16 Format and Signing of Bid**

- a. The uploaded bid shall be digitally signed by the Bidder or a person or persons duly authorized to bind the Bidder to the Contract. The latter authorization shall be indicated by written power-of-attorney accompanying the Bid.

#### **1.17 Submission of bid**

- a. The bidders, who downloaded the bidding documents, are eligible for submission of bids in their names only. **The complete bidding document downloaded has to be uploaded along with the bid** without any modifications/alternations, as a token of their acceptance towards enclosed scope of work, terms and conditions unconditionally.

#### **1.18 Deadline for Submission of Bids**

- a. Bids must be submitted NCDFl-Portal not later than the time specified for receipt of the bids in the Invitation for Bids (Section I). **The EMD (in original) should be delivered to communication address as stated** below, on or before the last date and time of receipt of bids.
- b. The Procuring Agency may, at its discretion, extend this deadline for the submission of bids by amending the Bidding Documents, in which case all rights and obligations of the Procuring Agency and Bidders previously subject to the deadline will thereafter be subject to the deadline as extended.

#### **1.19 Late receipt of EMD**

Any EMD received by the Procuring Agency after the deadline for submission of bid prescribed by the Procuring Agency, the bid shall be rejected.

#### **1.20 Modification and Withdrawal of Bids**

- a. The Bidder cannot modify or withdraw its bid after the bid's submission.
- b. No bid can be modified subsequent to the deadline for submission of bids.
- c. No bid may be withdrawn in the interval between the deadline for submission of bids and the expiration of the period of bid validity specified by the Bidder on the Bid Form. Withdrawal of a bid during this interval may result in the forfeiture of Bidder's EMD.

### **1.21 Bid Opening and Evaluation**

The NDS will open the Technical bids (of those bidders whose **Original EMD, in acceptable form**, have reached the office of NCDFI on the time and date stated in the IFB. Bidders can witness Virtual bid opening of bid.

Commercial bids will be opened electronically of only those bidders whose Technical Bid (Part-I) is found to be acceptable by NDS. Such bidders will be intimated regarding date of opening of Part II- Commercial Bid separately.

The NDS will examine the bids to determine whether they are complete, whether the requisite EMD have been furnished, whether the documents have been properly uploaded, and whether the bids are generally in order.

### **1.22 Preliminary Evaluation**

The Procuring Agency will examine the technical bids to determine whether they are complete, whether required supporting documents have been furnished, and whether the bids are generally in order.

The Procuring Agency will also examine whether the bid is complete. If the prices of certain item are found as "0" ("ZERO") it will be presumed that the bidder has included the cost of these items against some other items of the price bid. The bidder shall furnish/upload the details of such inclusions separately.

If the Procuring Agency considers that with these omissions, the offered services is not functional, then the bid will be treated as incomplete and non-responsive.

Arithmetical errors – Not Applicable

Prior to the detailed evaluation, the Procuring Agency will determine the substantial responsive to the bidding documents. For purposes of these clauses, a substantially responsive bid is one, which conforms to all the

terms and conditions of the Bidding Documents without material deviations. A material deviation is one which affects in any substantial way the functionality, scope, quality or performance of the deliveries or which limits in any substantial way inconsistent with the bidding documents, the Procuring Agency's rights or the bidder's obligations under the contract and the rectifications of which deviations would affect unfairly the competitive position of other bidders presenting substantially responsive bids. The Procuring Agency's determination of a bid's responsiveness is to be based on the contents of the bid itself without recourse to extrinsic evidence.

A bid determined as not substantially responsive will be rejected by the Procuring Agency and may not subsequently be made responsive by the Bidder by correction of the non-conformity.

The Procuring Agency may waive any minor informality or non-conformity or irregularity in a bid which does not constitute a material deviation, provided such waiver does not prejudice or affect the relative ranking of the Bidder.

### **1.23 Evaluation and Comparison of Bids**

- a. The Procuring Agency will evaluate and compare the bids previously determined to be substantially responsive, pursuant to Clause 2.23 No bid will be considered if the complete requirement covered under the scope of work is not included in the bid. The unit price quoted should be after considering the discount, if any.
- b. The evaluation and comparison of bids will be done on the basis of quoted prices inclusive of applicable taxes and duties as mentioned in price schedule.

### **1.24 Bid Prices**

- a. The Bidder shall indicate on the Price Bid at NCDPI e-Portal the final unit prices (after considering discount, if any) of the goods it proposes to supply under the Contract. Bidders must submit a bid for the full quantity specified under technical specifications, failing which, such bids will not be considered for evaluation and comparison and will not be considered for award. The item wise quoted price should be inclusive of applicable GST.
- b. The item wise price of goods/services to be entered in the NCDPI e-portal shall be on FOR site basis inclusive of applicable GST, but including the charges for packing and forwarding, transportation, transit insurance and all other local costs incidental to delivery of goods/services to their final destination, storage cum erection insurance and safe custody at site.

- c. Please note that it is recommended for the supplier to indicate a single GST rate, as in many cases items may be procured on a composite basis, and a uniform GST rate would apply applicable

It should also be noted that the price evaluation of each item will be based on the total price inclusive of GST, irrespective of the GST rate quoted by the supplier. No price increase will be entertained after bid submission, and if the bidder refuses to honor their quoted price after the price bid is opened, their EMD may be forfeited.

For example, if a supplier quotes a unit price of ₹100 with an applicable GST of 18% , the total price including GST would be ₹118. However, if the actual applicable GST as per the HSN code is 28% , the purchaser will reverse-calculate the base price from ₹118. In this case, the basic price would be ₹92.1875, and 28% GST on that amount (₹25.8125) would again result in ₹118. Hence, the price including GST (₹118 in this example) will be considered for evaluation purposes. Bidders are advised to quote accordingly.

**1.25 Prices indicated on the Price Bid shall be entered in the following manner:**

- a. The item wise price of goods to be supplied/installed and commissioned shall be on FOR site basis inclusive of applicable GST. The item wise price shall also include the charges for packing and forwarding, transportation, transit insurance and all other local costs incidental to delivery of the goods to their final destination, storage cum Erection insurance and safe custody at site.
- b. The Bidder's separation of price components in accordance with above will be solely for the purpose of facilitating the comparison of bids by the Procuring Agency and will not in any way limit the Procuring Agency's right to contract on any of the terms offered.

**1.26 Fixed Price**

Basic Price quoted by the Bidder shall be fixed during the bidder's performance of the Contract and not subject to variation on any account. A bid submitted with an adjustable price quotation for such goods and services will be treated as non-responsive and rejected.

**1.27 Price Break-up**

Bidders shall furnish the price for the supply and for installation/ commissioning along with detailed cost break-up (item wise), which will be applicable for progressive payments. Items and works for which no break-up price is furnished by the bidder

will not be paid for by the Procuring Agency when supplied/executed and shall be deemed covered by the other break-up prices.

However, for evaluation purpose, prices quoted as indicated in Para 2.25 above only will be considered.

Notwithstanding anything stated elsewhere in the bidding documents, irrespective of mode of the contracting with the successful bidder, the successful bidder will be liable for the payment of Indian Income Tax, surcharge on Income Tax and any other Corporate Tax, turnover tax etc. if attracted under the provisions of the law. The Procuring Agency shall not bear any tax liability whatsoever irrespective of the mode of contracting

### **1.28 Contacting the Procuring Agency**

- a. Subject to Clause 2.23, no Bidder shall contact the Procuring Agency on any matter relating to its bid, from the time of the bid opening to the time the Contract is awarded.
- b. Any effort by a Bidder to influence the Procuring Agency in the Procuring Agency's bid evaluation, bid comparison or contract award decisions may result in the rejection of the Bidder's bid.

### **1.29 Post Qualification**

- a. In the absence of pre-qualification, the Procuring Agency will determine to its satisfaction whether the Bidder selected as having submitted the lowest evaluated responsive bid is qualified to satisfactorily perform the Contract.
- b. The determination will consider the Bidder's financial, technical and servicing capabilities. It will be based upon an examination of the documentary evidence of the Bidder's qualifications submitted.
- c. An affirmative determination will be a prerequisite for award of the Contract to the Bidder. A negative determination will result in rejection of the Bidder's bid, in which event; the Procuring Agency will proceed to the next lowest evaluated bid to make a similar determination of that Bidder's capabilities to perform satisfactorily.

### **1.30 Award of Contract**

Purchaser will award the contract to the successful bidder whose bid has been determined to be substantially responsive and has been determined as the lowest evaluated bid provided further the

bidder is determined to be qualified to perform the contract satisfactorily as per clause 28.

**1.31 Purchasers Right to Vary Quantities at the Time of Award.**

The Purchaser reserves the right to vary the quantities at the time of award of the contract, if the need arises in consultation with the successful bidder.

**1.32 Purchaser's Right to Accept Any Bid and to Reject Any or All Bids**

NDS. does not bind itself to accept the lowest bid. NDS reserves the right to award the job either in part or full. NDS at its sole discretion and without assigning any reason thereof, also reserves the right to accept any/or reject any or all bids.

NDS also reserves the right to annul the bidding process and reject all bids at any time prior to award of Contract, without thereby incurring any liability to the affected Bidder or Bidders or any obligation to inform the affected Bidder or Bidders of the group NDS for the Purchaser's action.

**1.33 Notification of Award**

- a. The evaluation and rate discovery to done by Procuring Agency, but the issuance of PO/Notification of Award will be issue by Purchaser (respective milk producer company).
- b. Prior to expiration of the period of bid validity, the Purchaser will notify the successful Bidder in writing by registered letter/courier/by cable/telex/fax/e-mail, to be confirmed in writing by registered letter/courier, that its bid has been accepted.
  - c. The notification of award will constitute the formation of the Contract.
- d. Upon the successful Bidder's furnishing of performance security, the Procuring Agency will discharge the EMD of unsuccessful bidders.

**1.34 Signing of Contract**

- a. As the Procuring Agency notifies the successful Bidder that its bid has been accepted, the bidder is requested to submit the "Undertaking" as provided in the Bidding Document, incorporating all agreements between the parties.
- b. Successful bidder needs to sign the Agreement

- c. The “Undertaking” and “Acceptance copy of the contract” shall be returned within 15 days from the date of contract.

### **1.35 Performance Security**

- a. Within 30 days of the receipt of notification of award from the Purchaser, the successful Bidder shall furnish the **performance BG (5% of total contract amount)** in accordance with the Conditions of Contract, in the Performance Security Form/DD provided in the Bidding Documents or another form acceptable to the Purchaser. Bank guarantee issued only by Nationalized/Scheduled commercial Banks/Foreign banks having branches in India will be accepted.
- b. Failure of the successful Bidder to comply with the requirement of Clause 2.31 or Clause 2.32 shall constitute sufficient reason for Purchase for the annulment of the award and forfeiture of the EMD, in which event the Purchaser may make the award to the next lowest evaluated bidder or call for new bids.
- c. If the bid of the successful bidder is seriously unbalanced in relation to the Purchaser estimate of the real cost of the work to be performed under the contract, the Purchaser may require additional performance security to protect the Purchaser against financial loss in the event of subsequent default of the successful bidder under the contract. The value of the additional performance security shall be decided by the Purchaser based on mutual discussions with the successful bidder. The additional performance security shall be valid until the completion of contract or the Purchaser may decide as.

### **1.36 Bid Form**

- a. The Bidder shall complete the Bid Form (Format given as **Error! Reference source not found.**) furnished in the Bidding Documents and provided the same along with technical bid.
- b. All the required document duly sealed & signed should be submitted before the specified date and time at NCDFI Portal.

### **1.37 Place of Opening of bid : NCDFI website Portal (by Virtual Mode).**

**1.38 Date of Delivery:**

Date of delivery prescribed shall be deemed to be the essence of the purchase order/contract. Each unit of an item shall be delivered to destination not later than the delivery date specified in the order. Delivery Schedule is given at Section VI.

**1.39 Liquidated Damages:**

If the bidder fails to deliver any or all the goods or perform the services within the time period(s) specified in the purchase order/contract, purchaser shall, without prejudice to its other remedies under the purchase order/contract, deduct from the purchase order/contract price, as liquidated damages, a sum equivalent to: 0.5% of the value of the delayed items/services only, for each completed week of delay

Week comprising of 7 days including holidays and any incomplete week shall be ignored for the calculation of liquidated damages.

Purchaser may without prejudice to any other method of recovery, deduct the amount of such damages from any payment in its capacity, due or which may become due to the Contractor. The payment or deduction of such damages shall not relieve the Contractor from his obligation to complete the Works, or from any other of his obligations and liabilities under the Contract.

The total amount so deducted shall not exceed 10% of the purchase order/ contract value. Once the maximum is reached, purchaser may consider cancellation/

Termination of purchase order/ contract, and forfeiture of performance ity and/or Retention amount.

**1.40 Termination of contract:**

- a. During the term of this contract, either party, reserves its right to terminate this contract by giving 30 (Thirty) days' notice without assigning any reason thereof.
- b. Purchaser reserves the exclusive right to suspend, cancel, and terminate this contract at any time if it has sufficient reasons to believe that the Contractor has failed to perform or observe or fulfil any of the terms and conditions herein before contained and/or liable and responsible for any loss or damage suffered by the Purchaser.
- c. The Purchaser shall have the right to ask of the removal of any person, if one is not considered to be competent and orderly in the discharge of his duties.

**1.41 Termination for Convenience**

- (a) The Purchaser, by notice sent to the Supplier, may terminate the Contract, in whole or in part, at any time for its convenience. The notice of termination shall specify that termination is for the Purchaser's convenience, the extent to which performance of the Supplier under the Contract is terminated, and the date upon which such termination becomes effective.
- (b) The Goods that are complete and ready for shipment within twenty-eight (28) days after the date of issuance of the termination notice, shall be accepted by the Purchaser at the Contract terms and prices. For the remaining Goods, the Purchaser may elect:

to have any portion completed and delivered at the Contract terms and prices; and/or to cancel the remainder and pay to the Supplier an agreed amount for partially completed Goods and Related Services and for materials and parts previously procured by the Supplier.

**1.42 Penalty:**

- a. In the event of the Contractor's failure to execute the work entrusted to him under this contract satisfactorily, Purchaser shall make alternative arrangement to do it and the difference of cost incurred by Purchaser thereby shall be recovered from the Contractor's unpaid bills and Security Deposit.
- b. If the service provided by the agency is found to be unsatisfactory, the same shall be brought to their notice in writing and if no improvement is found in a stipulated time, then a penalty up to 10% of the monthly payment value will be imposed and same shall be recovered from the monthly bill.

**1.43 Force Majeure**

The terms and conditions mutually agreed upon shall be subject to Force Majeure Clause. Neither party shall be considered in default in performance of their obligations here under if such performance is prevented or delayed because of war, hostilities, revolution, civil commotion, strike, epidemic, accident, fire, wind, flood, earthquake or because of law and order proclamation, regulation or ordinance of any Government or of any act of GOD or any other clause whether of

similar or dissimilar nature, beyond the reasonable control of the party affected. Should one or both the parties be prevented from fulfilling their obligations by a state of Force Majeure lasting continuously for a period of six months, the two parties should consult each other regarding the future implementation of the contract.

**1.44 Taxes, duties and levies**

All taxes, duties, levies etc. imposed by the Central / state

Government in connection with this contract in force at the time of submission of BIDs shall be borne by the Contractor during currency of contract. The taxes deemed to have included in the price bid, however service tax shall be payable as applicable.

**1.45 Completion of contract**

Unless otherwise terminated under the provisions of any other relevant clause, this contract shall be deemed to have been completed at the expiration of the duration of contract.

The performance/retention bank guarantees should be valid up to 90 days beyond the warranty period.

**1.46 Insurance:**

In case where the purchase order is placed on “free delivery at site” including unloading basis, no insurance premium will be paid by purchaser. In such a case, all required insurance policies (Transit risk insurance policy, storage insurance policy, All risk policy, Workmen Compensation policy, Third Party insurance etc.) may be obtained by the supplier/ contractor to safeguard their own interests and to protect the material against transit hazards, storage (at Site) for damage/ loss.

**1.47 Rejection:**

Purchaser reserves the right to reject the goods either in full or in part, if at the time of delivery, it is noticed that the goods supplied do not conform to the specifications/ description given in the purchase order. The rejections, if any, will be intimated to the supplier in writing within a reasonable time. The supplier will be liable and responsible to repair/ replace the rejected goods within the original delivery period. No extra payment shall be made for such replacement to the supplier/ contractor for freight, unloading and insurance etc. Till the repair/ replacement is made, the rejected goods shall be lying at supplier’s risk, cost and responsibility. If the supplier does not arrange to repair/ replace the rejected goods within the original delivery period, purchaser may dispose off such goods at supplier’s risk and in the manner, purchaser thinks fit. Purchaser shall be at liberty to purchase the quantity of items rejected from other parties without giving any notice and at supplier’s risk & cost and recover the additional expenditure, if any, from any of the outstanding dues of the supplier/ contractor. Purchaser shall be entitled to recover the expenses made by Purchaser on storage and handling of such rejected goods till the goods are removed from Purchaser’s premises/ stores.

**Variation:**

- A. The Purchaser can make any variation of the form, quality or quantity of the Works or any part thereof that may, in his opinion, be necessary

and for that purpose, or if for any other reason it shall, in his opinion be desirable, he shall have power to order the Supplier to do and the Supplier shall do any of the following:

- a. Increase or decrease the quantity of any work included in the contract,
  - b. Omit any such work,
  - c. Change the character or quality or kind of any such work,
  - d. Change the levels, lines, position and dimensions of any part of the works, and
  - e. Execute additional work of any kind necessary for the completion of the works and no such variation shall in any way vitiate or invalidate the contract, but the value, if any, of all such variations shall be taken into account in ascertaining the amount of the Contract price.
- (b) All extra or additional work done or work omitted by order of the Purchaser shall be valued at the rates and prices set out in the contract if in the opinion of the Purchaser, the same shall be applicable. If the contract does not contain any rates or prices applicable to the extra or additional work, then suitable rates or prices shall be agreed upon between the Purchaser and the Supplier, with consideration of Overhead & Profit limiting to 15% . In the event of disagreement, the Purchaser shall fix such rates or prices as shall, in his opinion, be reasonable and proper.

#### **1.48 Sub-Contract:**

In the event of awarding sub-contract to any party/parties by the supplier/ contractor for the manufacture/supply/erection of any parts/spares/components that will be used in ordered equipment, the supplier/ contractor must furnish the details about their sub - contract also. The responsibility regarding quality, quantity, guarantee/warranty of the materials supplied by the sub-contractors' rests on the supplier/ contractor.

#### **1.49 Spares :**

If asked for, the supplier shall provide a list of spare parts, which will be required for the plants and equipment supplied for at least two years of normal operation with the names and the addresses of the manufacturers from whom these can be procured. The list should contain the code numbers of the parts, which are required to be procured, in addition to the machine number, models etc.

#### **1.50 Inspection:**

On placement of order, the equipment under the purview of supply should be inspected by the supplier's own technical experts at the supplier's works and such inspection report should be forwarded to

Purchaser in triplicate. However, Purchaser reserves its right to inspect at any stage of fabrication/manufacture of the equipment/material. The supplier should intimate the Purchaser without fail, when the equipment is ready for inspection including the stage wise inspection. The supplier should not proceed with further manufacture and/or despatch of equipment, without obtaining a clearance certificate from Purchaser. The supplier should forward to Purchaser the Test Certificates, wherever applicable, obtained from concerned authorities/ principal manufacturers either regarding quality or any other details of the items utilised in the process of manufacture/fabrication

**1.51 Dispatch Instructions:**

The materials are to be despatched to the destination by the mode of transport specified in order under intimation to Purchaser . Depending on the type of material, the supplier shall have to carry out proper packing/ crating to avoid breakages in transit. Other details of despatch such as consignee's particulars etc. are mentioned in the purchase order. For using any mode of transport other than the specified one, prior concurrence from Purchaser in writing should be obtained. All consignments should be despatched on freight paid basis irrespective of price basis. In the event of freight payable extra by Purchaser , the supplier shall have to obtain Purchaser 's-- prior approval and produce necessary documentary evidence in support of claims. Unless otherwise stated, the original RR/LR should be sent directly to the consignee along with three copies of invoice and two copies of Delivery Challan/e-way bills and Packing List.

**1.52 Force Majeure:**

The terms and conditions mutually agreed upon shall be subject to Force Majeure Clause. Neither the supplier/ contractor nor Purchaser shall be considered in default in performance of his/their obligations hereunder if such performance is prevented or delayed because of war, hostilities, revolution, civil commotion, strike, epidemic, accident, fire, wind, flood, earthquake or because of any law, order, proclamation, regulation or ordinance of any Government or of any act of God or any other cause whether of similar or dissimilar nature, beyond the reasonable control of the party affected. Should one or both the parties be prevented from fulfilling his/their contractual obligations by a state at Force Majeure lasting continuously for a period of six months, the two parties should consult each other regarding the future implementation of the contract/purchase order.

**1.53 Arbitration**

- a. Except as otherwise provided elsewhere in the contract, if any dispute, difference, question or disagreement or matter whatsoever, shall, before and after completion or abandonment of work or during extended period, hereafter arises between the parties, as to the meaning, operation or effect of the contract or out or relating to the contract or breach thereof, shall be referred to Sole Arbitrator to be appointed by NDDB Dairy Services/Purchaser at the time of

dispute.

- b. It is a term of the contract that the party invoking arbitration shall specify all disputes to be referred to arbitration at the time of invocation of arbitration under the clause.
- c. It is a term of the contract that the cost of arbitration will be borne by both the parties.
- d. The venue of the arbitration shall be Delhi/Decided by the Purchaser.
- e. Settlement of any disputes arising out of this agreement will be subject to Delhi/ Decided by the Purchaser Jurisdiction only. The resolution of dispute, if any, shall be settled initially, by way of mutual consultation and if it is not settled the same shall be referred to arbitrator. The sole arbitrator will be appointed by NDDB Diary Services under his discretion and the arbitration proceedings shall be governed by the provisions of the Indian Arbitration and Conciliation Act 1996 and thereafter amendments issued from time to time. The award of such sole arbitrator shall be final, conclusive and binding on the parties to this contract.

#### **1.54 Jurisdiction**

The contract shall be governed by and constructed according to the law in force in India. The venue of the arbitration shall be at Delhi.

#### **1.55 Negligence or default of contractor:**

- a. Purchaser may without prejudice to its other rights or remedy against the contractor in respect of inferior workmanship or any other provision of this contract or otherwise may issue a Notice in writing to absolutely determine the contract for the following cases:
- b. If the contractor neglects to carry out his obligation under the contract and / or commits defaults in complying with any of the terms and conditions and does not remedy even after written notice.
- c. When the contractor has been made liable for action under the aforesaid cases, Purchaser shall have powers:-
- d. To determine or rescind the contract. Upon such rescission, the full security deposit recoverable under the contract shall be liable to be forfeited and shall be absolutely at the disposal of Purchaser.

After giving notice to the contractor to measure up the work done by him in order to get the balance work done by another contractor.

## ***Statuary Compliances***

All interior electrical works shall be executed as per approved drawings and specifications.

- All materials used shall conform to relevant IS standards and approved makes.
- The contractor shall comply with all applicable statutory regulations, including the Indian Electricity Act and CEA regulations.
- All work shall adhere to local electrical inspectorate norms and obtain necessary approvals, wherever required.
- The contractor shall ensure compliance with labour laws, ESI, PF, and other applicable statutory provisions.
- Necessary safety measures shall be followed as per statutory guidelines.
- Proper earthing and protection systems shall be provided as per standards.
- All installations shall be tested and certified before handing over.
- Any statutory fees, permissions, or penalties (if applicable) shall be borne by the contractor.
- Defects during the defect liability period shall be rectified at no extra cost.

**Technical Specifications**  
**Interior Work**

Sl No	DESCRIPTION/SPECIFICATION	Unit	QTY
A	<b>MODULAR FURNITURE</b>		
	<b>HOSTEL BUILDING 2 BLOCKS</b>		
1	<p>Supplying and Fixing of Bed with the following specification:- BETA (HOSTEL ROOM BED)            2060L X 900D X400- 750H            Cot with Metal Storage.            Overall size of the Cot – 2060L x 900D x 750mm H (Bed height w/o mattress comes to about 400mm)            The cot design is simple, modular &amp; minimalist design, quick &amp; easy to assemble, weldless technology, stable &amp; sturdy to take adequate weight. Verticals are from Sq.40x40x1.60mm thk (16g) and horizontal beams are Rectangular tubular profiles of 60x40 confirming to IS 4923:2017. All 04 vertical sections/legs are connected to to form the under-structure, confirming to IS 4923:2017 grade. Beam to beam are connected by cross beams of Sq.20mm ERW tube confirming to IS 4923:2017, which supports the mattress platform. Mattress platform is of 12mm thk plywood sheet. All metal parts comes with powder coating finish 60-80 microns thk. The legs are fitted with PPGF moulded leg bushes &amp; levellers to adjust heights upto 20mm based on ground undulations.</p>	Nos	64.00

2	Storage Cum Luggage Rack (Hostel Room) - Providing and fixing low hieght storage cabinets of size 1.05 mtr x 0.75 mtr ) and Depth as per size available at site along the walls/partitions, as per interior drawings, using 12 mm BWP ply board for carcase, shutters, vertical and horizontal partitions, 6mm ply for the back and 1mm High Gloss laminate of approved shade on vertical and horizontal visible surfaces. The shutters shall be overlapped on the carcase and shall be provided with Hettich/Haffele Hydraulic hinges. The width of the shutter shall site conditions. All the exposed edges of the board shall be provided with wooden lipping/ PVC Tepping 19mm x 3mm, duly PU polished/PU polish in desired shade. The inner surface shall be provided with 0.8mm thick laminate of desired shade, design and gloss. The cabinet shall be complete with handles, knobs, locks and magnet catchers, Hnger pipes etc as directed to the satisfaction of the Architect/Engineer.	Nos	64.00
3	Supplying and Fixing of TABLE with the following specification:- HOSTEL TABLE 800L X 525D X750H Specification : Table top is 25mm thk PLB Understructure in Sq 25 tube with powder coating finish 200*800 Modesty	Nos	74.00
4	Supplying and Fixing of Chair with the following specification:- Tang : Multipurpose Chair(Hostel Room Chair) Single Mould Polyproplene Stackable Chair 3.9kg sturdy chair	Nos	64.00

5	<p>Supplying and Fixing of Double Bed with the following specification:-  DOUBLE BED-TEACHER'S  2030L X 1575D X 415 /750H  The head rest, foot rest &amp; bed side panels are from 25mm thk, E1 grade, particle board prelaminated on two sides, with rounded corners.  The storage - drawer units and center panels are of 18mm thk prelam particle board.  Height of head rest panel is 750mm and of foot rest is 450mm.  The inner structure of the cot has a metal tubular frame work, Tubes are confirming to IS 4923:1997, it is in-addition to center panels of prelaminated particle board. Mattress base or platform is of 18mm thk prelam particle board in white laminate finish.</p> <p>The design offers a knockdown Construction, easy to assemble, strong and robust product. All metal parts comes with powder coating finish of 60-80 microns thick. All hardware are of steel, comes with zinc blue / yellow / black passivation.</p>	Nos	8.00
---	---	-----	------

6	<p>Supplying and Fixing of Queen Bed with the following specification:-  QUEEN SIZE BED-CARE TAKER  The head rest, foot rest &amp; bed side panels are from 25mm thk, E1 grade, particle board prelaminate on two sides, with rounded corners. Height of head rest panel is 750mm and of foot rest is 450mm.  The inner structure of the cot has a metal tubular frame work, Tubes are confirming to IS 4923:1997, it is in-addition to center panels of prelaminate particle board. The foot rest &amp; head rest panels comes with adjustable levellers. Mattress base or platform is of 18mm thk prelam particle board in white laminate finish.</p> <p>The design offers a knockdown Construction, easy to assemble, strong and robust product. All metal parts comes with powder coating finish of 60-80 microns thick. All hardware are of steel, comes with zinc blue / yellow / black passivation.</p>	Nos	2.00
7	<p>Supplying and Fixing of Wardrobe with the following specification:-  WARDROBE-4(TEACHER'S ROOM &amp; CARE TAKER CUPBOARD)  900L X 450D X1830H  Hostel Wardrobe with Mirror  Body : Complete body made of 18 MM Thick particle board with 2 MM PVC Edge band.  Shelf: Made of 18 MM Thick particle board with 2 MM PVC Edge band  Drawer: Mounted on Full panel Drawer Slide With Lock and recessed handle  Hanger Rod Included  Construction: Storage will be of knockdown construction</p>	Nos	10.00

8	<p>Supplying and Fixing of Chair with the following specification:-  ALPHA MBG FXD ARMS - Black (CARE TAKER ROOM)  * Alpha Medium (Black) Back Mesh Chair  * AN 70 Mesh  * Fabric Upholstered Cushion Seat  * Centre Tilt Mechanism  * Fixed Arms  * Gaslift  * Nylon Base  * 50mm Castors</p>	Nos	6.00
9	<p>Supplying and Fixing of Side Storage with the following specification:-  SIDE STORAGE (TEACHER'S ROOM STORAGE)  450L X 450D X510H  BED SIDE STORAGE  Configuration - 1 Drawer on Top + Open shelf below  Body - made up of 18MM Thk Prelaminated Particle Board with 2 MM PVC Edge banding  Drawer - With full panel drawer slides and Finger groove handle with cam Lock  Finish - As per Approved Shade</p>	Nos	8.00

10	<p>Supplying and Fixing of TABLE with the following specification:- VMT-1275 - MAIN TABLE (CARE TAKER ROOM)</p> <p>Table Top- Made of 25mm thick prelaminated particle board of approved shade confirming to E1 norms. All the edges of workstation surface shall be provided with machine pressed 2mm thick imported PVC lipping glued with hotmelt Eva glue free from any VOC.</p> <p>Gable End And Modesty - Made of 18mm thick prelaminated particle board of approved shade confirming to E1 norms. All the edges of workstation surface shall be provided with machine pressed 2mm thick imported PVC lipping glued with hotmelt Eva glue free from any VOC.</p>	Nos	2.00
11	<p>Supplying and Fixing of Chair with the following specification:- ALPHA VA PC 4 LEGS -PP Grey(TEACHER'S HOSTEL ROOM CHAIR)</p> <p>*Alpha Medium PP (Grey )Back Mesh Chair  * AN 75 Mesh  * Fabric Upholstered Cushion Seat  * Fixed Arms  * Powdercoated 4 Legs  * with PU castors</p>	Nos	8.00

12	<p>Supplying and Fixing of 2 Seater Tandem with the following specification:-</p> <p>HOSTEL BUILDING (TV Room)  Forum 2 Seater Tandem  * With Cushion Seat  * With Mesh Back  * With Fixed Arms</p> <p>Beam &amp; Legs are from uniquely designed powder coated MS tubes , the foot are from high pressure diecast aluminium material comes with height adjustable levellers to take care even if there is a floor undulation upto 8-10mm. The Feet, Leg &amp; Beam comes in flat pack, knock down condition and are fixed using zinc passivated best grade hardware. Seat &amp; back are integrated &amp; each seat comes with handle / Arm rests. Seat is a moulded foam, upholstered with fabric and back is high quality mesh provides ample air circulation. The product offers the best ergonomic seating &amp; comfortable back rest.</p> <p>All Metal &amp; aluminium parts comes with powder coating finish of 60-80 micron thk.</p>	Nos	4.00
----	---	-----	------

13	<p>Supplying and Fixing of 3 Seater Tandem with the following specification:-</p> <p>HOSTEL BUILDING (Lobby)</p> <p>Forum 3 Seater Tandem</p> <p>* With Cushion Seat</p> <p>* With Mesh Back</p> <p>* With Fixed Arms</p> <p>Beam &amp; Legs are from uniquely designed powder coated MS tubes , the foot are from high pressure diecast aluminium material comes with height adjustable levellers to take care even if there is a floor undulation upto 8-10mm. The Feet, Leg &amp; Beam comes in flat pack, knock down condition and are fixed using zinc passivated best grade hardware. Seat &amp; back are integrated &amp; each seat comes with handle / Arm rests. Seat is a moulded foam, upholstered with fabric and back is high quality mesh provides ample air circulation. The product offers the best ergonomic seating &amp; comfortable back rest.</p> <p>All Metal &amp; aluminium parts comes with powder coating finish of 60-80 micron thk.</p>	Nos	4.00
----	---	-----	------

14	<p>Supplying and Fixing of 4 Seater Tandem with the following specification:-          HOSTEL BUILDING (TV Room)          Forum 4 Seater Tandem          * With Cushion Seat          * With Mesh Back          * With Fixed Arms          Beam &amp; Legs are from uniquely designed powder coated MS tubes, the foot are from high pressure diecast aluminium material comes with height adjustable levellers to take care even if there is a floor undulation upto 8-10mm. The Feet, Leg &amp; Beam comes in flat pack, knock down condition and are fixed using zinc passivated best grade hardware. Seat &amp; back are integrated &amp; each seat comes with handle / Arm rests.          Seat is a moulded foam, upholstered with fabric and back is high quality mesh provides ample air circulation. The product offers the best ergonomic seating &amp; comfortable back rest.          All Metal &amp; aluminium parts comes with powder coating finish of 60-80 micron thk.</p>	Nos	4.00
15	<p>Supplying and Fixing of Centre Table with the following specification:-          CORNER TABLE-SQUARE SHAPE (TV Room &amp; Lobby)          600WX600DX 450H          Table top :          For Office / meeting tables - 25mm thk prelaminated particle board with 2mm edge banding finish          Understructure: supported on MS powdercoated leg .</p>	Nos	18.00

16	<p>Supplying and Fixing of Centre Table with the following specification:- CENTRE TABLE-RECTANGLE SHAPE (TV Room &amp; Lobby) 1050WX600DX 550H Table top : For Office / meeting tables - 25mm thk prelaminated particle board with 2mm edge banding finish Understructure: supported on MS powdercoated leg .</p>	Nos	4.00
17	<p>Supplying and Fixing of Cupboards with the following specification:- CUPBOARDS (STORE ROOM) KD-036 Swing glass doors with four shelves, 5 levels of box files W 900 x D 400 x H 1850 Material thickness: 0.8mm High quality cold rolled steel plate 3. Surface:Powder coating 4. KD structure 5.Packing: 5 layers carton</p>	Nos	4.00
18	Supplying following HOSTEL ACCESSORIES:		
a	Bucket & Tumbler set (Cello)	Set	30.00
b	Plastic stool (Cello)	Nos	30.00
c	Cotton Bath towel (400 GSM)	Nos	100.00
d	Recron Pillow (16X24 inch)	Nos	150.00
e	Recron Pillow cover (16X24 inch)	Nos	150.00
f	Quilt (Single Bed)	Nos	100.00
g	Quilt cover (Single Bed)	Nos	125.00
h	Quilt (Double Bed)	Nos	20.00
i	Quilt cover (Double Bed)	Nos	20.00
j	Bed Sheet (Single bed)	Nos	20.00
k	Bed Sheet (Double bed)	Nos	20.00
l	Memory Foam Mattress Mattresses (Single bed)	Nos	64.00

m	Memory Foam Mattress Mattresses (Double bed)	Nos	10.00
n	Blanket (Single bed-double layer)	Nos	150.00
l	Blanket (Double Bed-double layer)	Nos	20.00
m	Blanket cover (Single bed)	Nos	20.00
n	Blanket cover (Double bed)	Nos	80.00
o	Soap-125 gms of reputed brand	Nos	64.00
p	Shampoo pouch-5 ml of reputed brand	Nos	10.00
q	Hair oil pouch - 5 ml of reputed brand	Nos	100.00
	Dining Area		
19	Supplying and Fixing of Dining Table with the following specification:- GRANITE TOP CAFÉ TABLE (DINING TABLE) DIMENSIONS : 1800L x 900D x 750H. Table top : For Cafeterias - 18mm Thick GRANITE Table top. Support: End Legs: SS 304 LEGS AND understructure. Basic rate of Granite = Rs. 1800 per Sqmt	Nos	12.00
20	Supplying and Fixing of Dining Chair with the following specification:- Tang : Café Chair (DINING CHAIR) Single Mould Polypropylene Stackable Chair 3.9kg sturdy chair	Nos	72.00
	Watchmen Cabin		

21	<p>Supplying and Fixing of Bed with the following specification:- BETA (Watchmen Cabin)  2060L X 900D X400- 750H  Cot with Metal Storage.  Overall size of the Cot – 2060L x 900D x 750mm H (Bed height w/o mattress comes to about 400mm)  The cot design is simple, modular &amp; minimalist design, quick &amp; easy to assemble, weldless technology, stable &amp; sturdy to take adequate weight. Verticals are from Sq.40x40x1.60mm thk (16g) and horizontal beams are Rectangular tubular profiles of 60x40 confirming to IS 4923:2017. All 04 vertical sections/legs are connected to to form the under-structure, confirming to IS 4923:2017 grade. Beam to beam are connected by cross beams of Sq.20mm ERW tube confirming to IS 4923:2017, which supports the mattress platform. Mattress platform is of 12mm thk plywood sheet. All metal parts comes with powder coating finish 60-80 microns thk. The legs are fitted with PPGF moulded leg bushes &amp; levellers to adjust heights upto 20mm based on ground undulations.</p>	Nos	1.00
----	--	-----	------

22	<p>Supplying and Fixing of Wardrobe with the following specification:- WARDROBE-1 (WATCHMEN CUPBOARD)  900L X 450D X1830H  WARDROBE :</p> <p>Body : Complete body made of 18 MM Thick particle board with 2 MM PVC Edge band.  Door: Made of 18 MM Thick particle board with 2 MM PVC Edge band with D type Handle  Drawer: Mounted on Full panel Drawer Slide With Lock and reverse waterfall handle  Hanger Rod Included  Construction: Storage will be of knockdown construction</p>	Nos	1.00
----	---	-----	------

23	<p>Supplying and Fixing of Main Table with the following specification:-  VMT-1275 - MAIN TABLE (WATCHMEN TABLE)  Table Top- Made of 25mm thick prelaminated particle board of approved shade confirming to E1 norms. All the edges of workstation surface shall be provided with machine pressed 2mm thick imported PVC lipping glued with hotmelt Eva glue free from any VOC.  Gable End And Modesty - Made of 18mm thick prelaminated particle board of approved shade confirming to E1 norms. All the edges of workstation surface shall be provided with machine pressed 2mm thick imported PVC lipping glued with hotmelt Eva glue free from any VOC.  Prelam Pedestal- Pedestals enhance the storage space for documents and other materials with built in security arrangement. They are placed at the convenience of the user subject to availability of space. There are standard design for these Pedestals based on its utility and functionality.  Pedestals:  The pedestals are made of 18mm PLB. The drawers are made metal sides- called "Meta Box"- powder coated in Ivory finish. The "Meta Box" comes in 3 sizes- 55, 75 and 110 mm. The "Meta Box" slides on a channel with nylon rollers.  The drawer bottoms and back are made of 12mm PLB.  All the exposed portions have 1mm thick PVC edge band.  Provided with locks- multi lock which can lock all the fascias together. Keys are provided in duplicate.</p>	Nos	1.00
24	<p>Supplying and Fixing of Chair with the following specification:-  ALPHA MBG FXD ARMS - Black (Watchmen Cabin)  * Alpha Medium (Black) Back Mesh Chair  * AN 70 Mesh  * Fabric Upholstered Cushion Seat  * Centre Tilt Mechanism  * Fixed Arms  * Gaslift  * Nylon Base  * 50mm Castors</p>	Nos	1.00
Ground Floor AI Training Room			

25	<p>Supplying and Fixing of 3 Seater Tandem with the following specification:-</p> <p>RECEPTION AREA  Forum 2 Seater Tandem  * With Cushion Seat  * With Mesh Back  * With Fixed Arms</p> <p>Beam &amp; Legs are from uniquely designed powder coated MS tubes , the foot are from high pressure diecast aluminium material comes with height adjustable levellers to take care even if there is a floor undulation upto 8-10mm. The Feet, Leg &amp; Beam comes in flat pack, knock down condition and are fixed using zinc passivated best grade hardware. Seat &amp; back are integrated &amp; each seat comes with handle / Arm rests. Seat is a moulded foam, upholstered with fabric and back is high quality mesh provides ample air circulation. The product offers the best ergonomic seating &amp; comfortable back rest.</p> <p>All Metal &amp; aluminium parts comes with powder coating finish of 60-80 micron thk.</p>	Nos	2.00
26	<p>Supplying and Fixing of Side Table with the following specification:- GLAMOUR (RECEPTION SIDE TABLE) METAL LEGS 900DiaX550H</p>	Nos	2.00

27	<p>Providing and supply Reception Table.  Top made of 25 mm thick Prelam MDF IS 12406 with 0.8mm thick PVC edge bidding finish. Side made of 18 mm thick Prelam MDF IS 12406 with 0.8mm thick PVC edge bidding finish. 18 mm thick Prelam MDF IS 12406 for Modesty Panel with 0.8mm thick PVC edge bidding finish. MDu - 3 drawer made of 18 mm thick Prelam MDF IS 12406 with 0.8mm PVC edge bidding finish. Drawer run on Telescopic Channel with lock and handle etc. All necessary hardware included.</p>	Nos	1.00
28	<p>Training room chair for Class room 1 &amp; 2 VIT-1002 - Providing and supply The chair pipe structure of MS CRCA finish 16 gauge capsule pipe having a diameter of 32 mm, the cantilever tubular structure with stability for proper balance, the seat is supported on spring structure, the seat dimensioned and curved from an ergonomics point of view, the frame and spring-seat structure prepared from MIG welding process &amp; powder coated, proper high-density rubber bush provided at all four legs, seat upholstered with fabric. Perforated Polypropylene Backrest. Injection moulded plastic for back increases rigidity and flexibility for the user. Product is tested as per stringent BIFMA standards of performance.</p>	Nos	80.00

29	<p>Teaching material &amp; AV room 2 rooms          Providing and supply The chair pipe structure of MS CRCA finish 16 gauge round pipe having a diameter of 32 mm, the understructure frame tubular structure with stability for proper balance, the seat and back is supported on spring structure, the backrest armrest and seat dimensioned and curved from an ergonomics point of view, the frame and spring-seat structure prepared from MIG welding process &amp; powder coated, proper high-density rubber bush provided at all four legs, seat &amp; back upholstered with fabric.</p>	Nos	40.00
----	---	-----	-------

30	<p>Supplying and Fixing of Table with the following specification:- TEACHER'S Table -PERFORM (CLASS ROOM, TEACHING ROOM, AUDITORIUM ) 1500L x 600D x 750H Table; Made of 25mm thick prelaminated particle board of approved shade confirming to E1 norms. All the edges of workstation surface shall be provided with machine pressed 2mm thick PVC lipping. Leg: The Leg is constructed by 50Sq-16g ERW tube acts as vertical member &amp; Rect.50x25-16g ERW tube which acts as horizontal member. Rectangle tube which is a horizontal member of the leg is attached with two verticals on either ends by MIG welding. MIG (Co2) welding is done on inner faces of the tubes to take care of aesthetics of leg. Leg shoe is made from Acrylonitrile butadiene styrene which is insert moulded with zinc blue plated M10 – nuts for additional stiffness. The levellers can be adjusted from 0-25mm height provided with leveling bolts / screws to take care of undulations in the floor level. Beams; Legs are connected using cross beams made of 40 x 20 16 gauge rectangular tube and connected to legs with aluminium die cast wing connectors tight fit to leg beam alloted with 4 holes.</p>	Nos	8.00
31	<p>Supplying and Fixing of Chair with the following specification:- ALPHA MBG FXD ARMS - Black (RECEPTION CHAIR, Class room, Teaching room, Computer lab)  * Alpha Medium (Black) Back Mesh Chair  * AN 70 Mesh  * Fabric Upholstered Cushion Seat  * Centre Tilt Mechanism  * Fixed Arms  * Gaslift  * Nylon Base  * 50mm Castors</p>	Nos	12.00

32	<p>Supplying and Fixing of Table with partition with the following specification:-  FACULTY'S ROOM  Specifications - Partition system  Dimensions : 1200mmL x 600mmD x 750mmHT  Table top &amp; 1200mmHt Partition  Partition: Height - 1200mm frame with top and sides in Aluminium trims and junctions with diecast caps.  Table Top: 25mm thick Pre laminate particle board with 2mm PVC edge lipping on all exposed edges  Support: 18mm thick pre laminated gable ends.  Wiremanagement : 65mm Grommet cap on table &amp; One metal raceway tile to mount switches below table top level for power and skirting tile for data.  Tile Finishes :  Above table top Level: Fabric Tiles, one glass marker tile &amp; one magnetic tile per workstation.  Below table Top level: Pre-Laminated tiles and metal skirting tile on Main spine towards user.</p>	Nos	6.00
33	<p>Supplying and Fixing of Chair with the following specification:-  ALPHA MBG FXD ARMS - Black  (FACULTY'S ROOM CHAIR)  * Alpha Medium (Black) Back Mesh Chair  * AN 70 Mesh  * Fabric Upholstered Cushion Seat  * Centre Tilt Mechanism  * Fixed Arms  * Gaslift  * Nylon Base  * 50mm Castors</p>	Nos	12.00

34	<p>Supplying and Fixing of 2 Seater Tandem with the following specification:-  FACULTY'S ROOM  Forum 2 Seater Tandem  * With Cushion Seat  * With Mesh Back  * With Fixed Arms  Beam &amp; Legs are from uniquely designed powder coated MS tubes , the foot are from high pressure diecast aluminium material comes with height adjustable levellers to take care even if there is a floor undulation upto 8-10mm. The Feet, Leg &amp; Beam comes in flat pack, knock down condition and are fixed using zinc passivated best grade hardware. Seat &amp; back are integrated &amp; each seat comes with handle / Arm rests.  Seat is a moulded foam, upholstered with fabric and back is high quality mesh provides ample air circulation. The product offers the best ergonomic seating &amp; comfortable back rest.</p> <p>All Metal &amp; aluminium parts comes with powder coating finish of 60-80 micron thk.</p>	Nos	1.00
35	<p>Supplying and Fixing of Table with the following specification:-  LOW TABLE -PERFORM  (FACULTY'S ROOM TABLE)  1800L x 800D x 750H  PERFORM - METAL STRAIGHT LEGS  Table Top: 25mm thick Pre laminate particle board with 2mm PVC edge lipping on all exposed edges  Understructure: supported on MS powdercoated  Straight leg with MS support beam</p>	Nos	1.00

36	<p>LOW HT. STORAGE (Faculty Room)          'Providing and fixing low hieght storage cabinets of size 1.05 mtr x 0.75 mtr ) and Depth as per size available at site along the walls/partitions, as per interior drawings, using 12 mm BWP ply board for carcase, shutters, vertical and horizontal partitions, 6mm ply for the back and 1mm High Gloss laminate of approved shade on vertical and horizontal visible surfaces. The shutters shall be overlapped on the carcase and shall be provided with Hettich/Haffele Hydraulic hinges. The width of the shutter shall site conditions. All the exposed edges of the board shall be provided with wooden lipping/ PVC Tepping 19mm x 3mm, duly PU polished/PU polish in desired shade. The inner surface shall be provided with 0.8mm thick laminate of desired shade, design and gloss. The cabinet shall be complete with handles, knobs, locks and magnet catchers, Hnger pipes etc as directed to the satisfaction of the Architect/Engineer.</p>	Nos	3.00
----	--	-----	------

37	<p>Supplying and Fixing of Auditorium chairs with the following specification:-  CLICK AUDI  Technical specifications- Auditorium chairs.  AUDITORIUM CHAIRS: ( Click).  Seat and back assembly: The Frame is made out of 75x6mm thickness mild steel Flat is Confirming to IS - 2062. Seat &amp; Back is made by 12mm Molded Hot Pressed Plywood in Ergonomic Shape. Seat is assembled to the tubular clamp fixed to the frame for tilting operation. The Frame is welded by Co2 welding process for Uniform finish and high Tensile Strength wire 0.8mm IS:0419-SL.  Seat Size- 500 (W) x 520(D) mm. Back size - 620(W) x470(H) mm.  Seat height from the Floor- 455 mm. Over all Height from the floor - 925 mm.  Seat : Size - 490 (W) x 475(D) mm. Back size - 475 mm (W) x 470 (H) mm from seat.  Seat height from the Floor will be- 455 mm. Over all Height from the floor will be - 925 mm.  The seat profile shall be developed to help the user to get necessary comfort in popliteal region and ease of use in forward push for seat sliding feature.  Upholstery: Seat &amp; Back will be upholstered with fabric. Fabric shall be no flaming or progressive shouldering within one hour of placement of the cigarettes. Fire rated fabric confirming to BS EN 1021-1.</p>	Nos	140.00
----	---	-----	--------

The fabric will be Heavy duty- 340 GSM grade, 100 % polyester dyed yarn with 3 mm ± 0.5 mm foam backing. The fabric should be FMVSS 302 STANDARD & Water repellent. Spacing: The spacing from back to back shall be 1000 mm. The distance from seat to back of the front row should be 262 mm. The foam shall be Flexible PU FOAM: Automotive Grade High Resilience-HR Polyurethane foam of density: 50 ± 2 kg / M3. As per JIS K 6401 and IS:7888 for 25% compression.

The foam must be Fire Retardant. Thickness Cushion: 130 ± 20 mm; Backrest: 80 ± 10 mm. Hardness : Seat cushion : 120 ± 10 Newton; Backrest : 80 ±10 Newton.

Powder coating : Frame is powder coated to provide an attractive finish. Coating thickness of 40 to 60 microns is maintained. Powder coated products are durable & reduce the risk of scratches, chipping, abrasions, corrosion, fading and other wear issues. The powder coating process should undergo 7 step rust resistance pre treatment process viz degreasing, pickling as per IS standard. After pre treatment process, the components should be NANO coated and passified for better adhesion of paint as per IS 3618 - 1996. The pacified components should be powder coated with epoxy polyester powder to the thickness of 50-60 microns as per IS 101 and oven baked at 180 degrees for getting the scratch resistance finish. Product should have undergone the following testing process for durability and functionality, cross cut test for ensuring adhesion of power coating as per IS standard, Salt spray test for ensuring the rust resistance pre treatment process as per IS standard.

Arms : Arms are made of Rubber wood with Melamine Finish to Size: 50x 295x 25mm.

Fasteners : High Quality Metal Screws confirming to IS 2269 Hardness HRC 30 to 34.

Side Panel/Aisle Panel: - 460 (H)x 340(W) mm. Two side panel frames made of 3 mm thick CR steel. Each Side panel is fitted with two upholstered plywood of 12mm thick. The base plate is grouted to the floor using foundation expansion bolts.

Grouting: The grouting plate shall be in HR- size - L- 240mm, W-100mm, T- 10 mm, 14 mm diameter 4 holes for mounting purpose. Frame is mounted to the floor with 10 mm base plate. The grouting will be done with special adhesive- DOBEFIL 60 Insulating resin with expansion bolts.

38	<p>Supplying and Fixing of Chair with the following specification:- ALPHA VA PC 4 LEGS -PP Black (AUDITORIUM STAGE)</p> <p>*Alpha Medium PP Back Mesh Chair  * AN 70 Mesh  * Fabric Upholstered Cushion Seat  * Fixed Arms  * Powdercoated 4 Legs  * with PU castors</p>	Nos	6.00
39	<p>Supplying and Fixing of Side Table with the following specification:- GLAMOUR (AUDITORIUM STAGE)</p> <p>METAL LEGS  900DiaX550H</p>	Nos	2.00

40	<p>Supplying and Fixing of Table with the following specification:- (AUDITORIUM STAGE )  1500L x 600D x 750H  Table; Made of 25mm thick prelaminated particle board of approved shade confirming to E1 norms. All the edges of workstation surface shall be provided with machine pressed 2mm thick PVC lipping.  Leg: The Leg is constructed by 50Sq-16g ERW tube acts as vertical member &amp; Rect.50x25-16g ERW tube which acts as horizontal member. Rectangle tube which is a horizontal member of the leg is attached with two verticals on either ends by MIG welding. MIG (Co2) welding is done on inner faces of the tubes to take care of aesthetics of leg. Leg shoe is made from Acrylonitrile butadiene styrene which is insert moulded with zinc blue plated M10 – nuts for additional stiffness. The levellers can be adjusted from 0-25mm height provided with leveling bolts / screws to take care of undulations in the floor level.  Beams; Legs are connected using cross beams made of 40 x 20 16 gauge rectangular tube and connected to legs with aluminium die cast wing connectors tight fit to leg beam alloted with 4 holes.</p>	Nos	2.00
41	<p>Podium (AUDITORIUM STAGE):-  Providing and supply work Table with MDU Top 25 /18 mm thick Prelam MDF Board with 2 mm thick PVC edge bidding finish. Leg &amp; Apron 18 mm thick Prelam MDF Board with 2 mm thick PVC edge bidding. Side Table : Top and leg 25 mm thick Prelam MDF Board with 2 mm thick PVC edge bidding finish. Drawer &amp; shutter 18mm thick Prelam MDF Board with 2 mm thick PVC edge bidding finish with lock and nessary hardware.</p>	Nos	1.00

42	<p>Supplying and Fixing of Conference room table with the following specification:-  CONFERENCE ROOM  Dimensions : 5250mmL x 1200mmD x 750mmHT  Table Top: 25mm thick Pre laminate particle board with 2mm PVC edge lipping on all exposed edges  Support:  End Legs: 25mm Thick Pre Laminate Particle board Gable End Legs with connected Beam and Modesty for the Stability.  Intermediate Legs: MS podwer coated 60X40mm legs and supporting MS cross beams (40X20mm)  Wire Management:  450mm Aluminium flipup with soft closure and provision to mount switches and sockets on Cable tray &amp; Intermediate leg with wire entry / vertical wire entry cover considered.  (Length shall be considered as per drawing.)</p>	Nos	1.00
43	<p>Supplying and Fixing of Conference room chairs with the following specification:-  LIBERATE MB ML ADJ ARMS - Leatherette Seat &amp; Back(CONFERENCE ROOM CHAIR)  * Liberate Medium Back  * Leatherette Seat &amp; Back  * Multilock Mechanism  * One Way Adjustable Arms ( Height )  * Gaslift  * Nylon Base  * 60mm Nylon Castors</p>	Nos	20.00

44	<p>Supplying and Fixing of Conference room main chairs with the following specification:-  LIBERATE HB ML ADJ ARMS - Leatherette Seat &amp; Back (CONFERENCE ROOM MAIN CHAIR)  * Liberate Medium Back  * Leatherette Seat &amp; Back  * Adjustable Headrest  * Multilock Mechanism  * One Way Adjustable Arms ( Height )  * Gaslift  * Nylon Base  * 60mm Nylon Castors</p>	Nos	2.00
45	<p>Supplying and Fixing of Library Table with the following specification:-  LIBRARY  GLIDE - RECTA  1200L X 450D X 750H  The table top is in Rectangular shape &amp; it is from 25mm thk E1 prelam particle board with 2mm PVC edge banding.  This table comes in multiple depths of 400, 450 &amp; 500mm. Uniqueness of this table is that, Two legs comes with Castors and Two leg with leg bush fitted with adjustable levellers. This unique design makes the table very handy, light and easy to lift up one end &amp; move wherever you can.  Each Leg is from Round MS Tube structure of size 44.40 x 1.60mm thk (16g) confirming to IS 4923 : 1997, fixed with high pressure aluminum die cast connector at the top, which is from ADC-12 material confirming to ASTM E 1251-2011, IS 7658-1990 &amp; IS 11035 - 1190. For chemical composition and IS 1608 - 2005 for UTS &amp; Ys.. All 04 legs are fixed with these diecast connectors and the connector to connector are joined by the cross beams of Square shape hollow profiles of 25x25mm, using reverse taper mechanism.  Two legs at one end of the table are fitted with Leg bush &amp; adjustable leveller which is an injection moulded in engineering plastic and other two legs are fixed with Castor wheels.  Product come is knockdown Construction, easy to assemble, sturdy and stable product.  All metal &amp; diecast parts comes with powder coating finish of 60-80 microns thick. All hardware are of steel 8.8 grade comes with zinc blue / yellow / black passivation.</p>	Nos	4.00

46	<p>Supplying and Fixing of Library chairs with the following specification:-  <b>GENIUS CHAIR (LIBRARY CHAIR)</b>  *Genius Stackable Chair  *Powdercoated Legs  *Can be ganged for straight line.  Colour : Black &amp; White</p>	Nos	24.00
47	<p>Supplying and Fixing of Cupboards with the following specification:-  <b>CUPBOARDS (LIBRARY CUPBOARDS)</b>  KD-036  Swing glass doors with four shelves,  5 levels of box files  W 900 x D 400 x H 1850  Material thickness: 0.8mm  High quality cold rolled steel plate  3. Surface: Powder coating  4. KD structure  5. Packing: 5 layers carton</p>	Nos	8.00

48	<p>Supplying and Fixing of Table with the following specification:-Principal Cabin Table VMT-1890 - MAIN TABLE V2D-1F - PEDESTAL</p> <p>Table Top- Made of 25mm thick prelaminated particle board of approved shade confirming to E1 norms. All the edges of workstation surface shall be provided with machine pressed 2mm thick imported PVC lipping glued with hotmelt Eva glue free from any VOC.</p> <p>Gable End And Modesty - Made of 25 &amp; 18mm thick prelaminated particle board of approved shade confirming to E1 norms. All the edges of workstation surface shall be provided with machine pressed 2mm thick imported PVC lipping glued with hotmelt Eva glue free from any VOC.</p> <p>Prelam Pedestal- Pedestals enhance the storage space for documents and other materials with built in security arrangement. They are placed at the convenience of the user subject to availability of space. There are standard design for these Pedestals based on its utility and functionality.</p> <p>Pedestals: The pedestals are made of 18mm PLB. The drawers are made metal sides- called "Meta Box"- powder coated in Ivory finish. The "Meta Box" comes in 3 sizes- 55, 75 and 110 mm.</p> <ul style="list-style-type: none"> <li>• The "Meta Box" slides on a channel with nylon rollers.</li> <li>• The drawer bottoms and back are made of 12mm PLB.</li> <li>• All the exposed portions have 1mm thick PVC edge band.</li> <li>• Provided with locks- multi lock which can lock all the fascias together. Keys are provided in duplicate.</li> <li>• Provided with Finger groove handles</li> <li>• Provided with castors (mobile)</li> <li>• The back of the pedestals will normally be white finish unless specifically asked.</li> </ul>	Nos	1.00
49	<p>Supplying and Fixing of Chairs with the following specification:-PIXEL HB - Leatherette (Principal chair)</p> <p>* High Back Chair * Seat &amp; Back Leatherette * Multilock with Knee tilt Mechanism * Aluminum Fixed Arms * Gaslift * Aluminum Base * 60mm castors.</p> <p>Colour : Black, Grey &amp; Tan</p>	Nos	1.00

50	<p>Supplying and Fixing of Visitor chairs with the following specification:-</p> <p>PIXEL MB - Leatherette (Principal visitor chairs)</p> <p>* Medium Back Chair</p> <p>* Seat &amp; Back Leatherette</p> <p>* Multilock with Knee tilt Mechanism</p> <p>* Aluminum Fixed Arms</p> <p>* Gaslift</p> <p>* Aluminum Base</p> <p>* 60mm castors.</p> <p>Colour : Black, Grey &amp; Tan</p>	Nos	3.00
51	Supplying and Fixing of Tandem Seating with the following specification:-		

51A	<p>Supplying and Fixing of Single Seater Tandem with the following specification:-</p> <p>PRINCIPAL CABIN</p> <p>Forum 2 Seater Tandem</p> <p>* With Cushion Seat</p> <p>* With Mesh Back</p> <p>* With Fixed Arms</p> <p>Beam &amp; Legs are from uniquely designed powder coated MS tubes , the foot are from high pressure diecast aluminium material comes with height adjustable levellers to take care even if there is a floor undulation upto 8-10mm. The Feet, Leg &amp; Beam comes in flat pack, knock down condition and are fixed using zinc passivated best grade hardware. Seat &amp; back are integrated &amp; each seat comes with handle / Arm rests. Seat is a moulded foam, upholstered with fabric and back is high quality mesh provides ample air circulation. The product offers the best ergonomic seating &amp; comfortable back rest.</p> <p>All Metal &amp; aluminium parts comes with powder coating finish of 60-80 micron thk.</p>	Nos	1.00
-----	--	-----	------

51B	<p>Supplying and Fixing of 3 Seater Tandem with the following specification:-</p> <p>PRINCIPAL CABIN  Forum 2 Seater Tandem  * With Cushion Seat  * With Mesh Back  * With Fixed Arms</p> <p>Beam &amp; Legs are from uniquely designed powder coated MS tubes , the foot are from high pressure diecast aluminium material comes with height adjustable levellers to take care even if there is a floor undulation upto 8-10mm. The Feet, Leg &amp; Beam comes in flat pack, knock down condition and are fixed using zinc passivated best grade hardware. Seat &amp; back are integrated &amp; each seat comes with handle / Arm rests.  Seat is a moulded foam, upholstered with fabric and back is high quality mesh provides ample air circulation. The product offers the best ergonomic seating &amp; comfortable back rest.</p> <p>All Metal &amp; aluminium parts comes with powder coating finish of 60-80 micron thk.</p>	Nos	1.00
52	<p>Supplying and Fixing of Side Table with the following specification:-</p> <p>GLAMOUR (PRINCIPAL  CABIN SIDE TABLE)  METAL LEGS  900DiaX550H</p>	Nos	1.00

53	<p>Supplying and Fixing of Centre Table with the following specification:-  CORNER TABLE-SQUARE SHAPE (PRINCIPAL ROOM)  600WX600DX 450H  Table top :  For Office / meeting tables - 25mm thk prelaminated particle board with 2mm edge banding finish  Understructure: supported on MS powdercoated leg .</p>	Nos	2.00
54	<p>MS SLOTTED AGGLE RACK - 900mm W X 450mm D X 2100mm H (STORE ROOM)  Providing, and Arranging s 2mm thick rack having load bearing members made of high strength MS angle with having six shelving CRCA sheet 20 Gauge, making five compartment, all the components having powder coating with thoroughly anti rust treatment including all necessary fixture, fastners, fittings, labour material machinery etc complete as seletced and directced by Engineer Incharge.</p>	Nos	4.00
TRAINING SHED			

55	<p>Supplying and Fixing of Table with the following specification:-VETERNIRY DOCTOR</p> <p>Table Top- Made of 25mm thick prelaminated particle board of approved shade confirming to E1 norms. All the edges of workstation surface shall be provided with machine pressed 2mm thick imported PVC lipping glued with hotmelt Eva glue free from any VOC.</p> <p>Gable End And Modesty - Made of 18mm thick prelaminated particle board of approved shade confirming to E1 norms. All the edges of workstation surface shall be provided with machine pressed 2mm thick imported PVC lipping glued with hotmelt Eva glue free from any VOC.</p> <p>Prelam Pedestal- Pedestals enhance the storage space for documents and other materials with built in security arrangement. They are placed at the convenience of the user subject to availability of space. There are standard design for these Pedestals based on its utility and functionality. Pedestals:</p> <p>The pedestals are made of 18mm PLB. The drawers are made metal sides- called "Meta Box"- powder coated in Ivory finish. The "Meta Box" comes in 3 sizes- 55, 75 and 110 mm. The "Meta Box" slides on a channel with nylon rollers.</p> <p>The drawer bottoms and back are made of 12mm PLB.</p> <p>All the exposed portions have 1mm thick PVC edge band.</p> <p>Provided with locks- multi lock which can lock all the fascias together. Keys are provided in duplicate.</p>	Nos	1.00
56	<p>Supplying and Fixing of Chair with the following specification:- ALPHA MBG FXD ARMS - Black (DOCTOR CHAIR)</p> <ul style="list-style-type: none"> <li>* Alpha Medium (Black) Back Mesh Chair</li> <li>* AN 70 Mesh</li> <li>* Fabric Upholstered Cushion Seat</li> <li>* Centre Tilt Mechanism</li> <li>* Fixed Arms</li> <li>* Gaslift</li> <li>* Nylon Base</li> <li>* 50mm Castors</li> </ul>	Nos	1.00

57	<p>Supplying and Fixing of Chair with the following specification:- ALPHA VA PC 4 LEGS -PP Black (VISITOR CHAIR)</p> <p>*Alpha Medium PP Back Mesh Chair  * AN 70 Mesh  * Fabric Upholstered Cushion Seat  * Fixed Arms  * Powdercoated 4 Legs  * with PU castors</p>	Nos	2.00
58	<p>Supplying and Fixing of Cupboards with the following specification:- CUPBOARDS (VETERINARY DOCTOR OFFICE) KD-036</p> <p>Swing glass doors with four shelves, 5 levels of box files  W 900 x D 400 x H 1850  Material thickness: 0.8mm  High quality cold rolled steel plate  3. Surface: Powder coating  4. KD structure  5. Packing: 5 layers carton</p>	Nos	1.00
<b>CONVENTIONAL FURNITURE WORK</b>			

59	<p>PROVIDING &amp; FIXING 0.7MM THICK ANTIMICROBIAL POWDER COATING ALUMINIUM CLIP IN PLAIN METAL FALSE CEILING SYSTEM :</p> <p>Providing &amp; Fixing of Metal Tile ceiling system comprising of Tile of 600mm wide and 600mm long manufactured of 0.7mm thick Aluminium Clip-In Plain with Antimicrobial coating Ceiling system. Tile ends will be raised with pips and stops to ensure positive engagement into the spring to enable for de-mounting of individual panels. The Tile sides will be sufficiently high to ensure a minimum deflection across the length of Tile. All tiles will be bevelled or square edged. The Tile shall be powder coated with IAM serious of polyester base powder coating, formulated without the use of TGIC that has to be tested by interdependent labourites to the requirements of the internationally recognised test standards JISZ 2801:2000 and tile shall be clipped into clip-in rail of 0.5mm thick G.I. The clip-in profile shall be supported from slab by means of suspension of 4mm G.I. Rod, Hold on Clamp with Clip. and rates also included for making trap door for maintenace purpose with required accesories and frame work. Properties of Metal Ceiling :</p> <p>PROPERTIES RELEVANT STANDARDS • Resistance to neutral salt spray: - ISO 9227 • Resistance to humid atmospheres: - ISO 6270-2 • Impact resistance: - ASTM D2794 (5/8 "" ball) (inch-pounds, front and reverse) Guard Endure D6 AB Guard Endure D8 AB (Gloss: 25-59) Guard Endure D8 AB (Gloss: 60-85)</p>	SQM	257
----	---	-----	-----

	<ul style="list-style-type: none"> <li>• Determination of antibacterial activity: - MOD ISO22196</li> <li>• Pencil hardness test: - ASTM D3363-05 (Derwent Graphic)</li> <li>• Scratch resistance: - ISO 1518-1 / SIS 83 91 17</li> <li>• Cupping test: - ISO 1520</li> </ul> <p>Antimicrobial coating is in conjunction with BioCote Ltd. should be tested for antimicrobial efficacy vs the ISO 22196:2011 and exhibited a minimum of 95% and up-to 99.99% reduction in bacterial population, classified as “microbiological results satisfactory”. Testing by BioCote Ltd. carried out by an independent laboratory and has included the following bacteria: -</p> <ul style="list-style-type: none"> <li>• Methicillin resistant Staphylococcus aureus (MRSA)</li> <li>• Escheria coli 0157</li> <li>• Salmonella typhimurium</li> <li>• Bacillus subtilis</li> <li>• Pseudomonas aeruginosa</li> <li>• Clostridium perfringens</li> <li>• Streptococcus faecalis</li> <li>• Enterococcus hirae &amp; Streptococcus pyogenes.</li> </ul> <p>Mode of Measurement : Measurements shall be wall to wall without any deductions for lights, diffusers, columns etc.</p>		
60	<p>P/F Suspended 12.5mm thick (Saint Gobbin, Armstrong, Shera, Gyproc make )Plain board Ceiling includes GypSerra™ Perimeter Channel Material GI(IS513) ,YS260Mpa,Finish-Galvanised 150GSM(IS277) is fixed along the Perimeter of existing wall/ partition with the help of PVC Anchor (6x40) at 600mm c/c for brick wall /RCC wall Comprising of following</p>	SQM	600

	<p>GypSerra™ Ceiling Angle Material-GI(IS513), YS260Mpa, Finish-Galvanised 150GSM(IS277)} is suspended by fixing it to the Gyproc® soffit cleat {GI(IS513)YS-260Mpa, Finish Galvanised 120GSM(IS277)}. Soffit Cleat and Gyproc® RawlPlug- Ø8x45mm {Material-IS 513 CR1 grade, Zinc coating (7 to 8 microns) pull out load- 6.8kN for M30 concrete grade} creating 1220mm x 1220mm grid.</p>		
	<p>GypSerra™ Intermediate channel {Material-GI(IS513),YS260Mpa,Finish-Galvanised 150GSM(IS277)} is fixed to the GypSerra™ Ceiling Angle with M6 x 12mm Hex Bolt &amp; Hex Nut arrangement {Material-As per EN 10083 Finish - ZincPlating} or with 2 Nos of Ø4.2x13 Gyproc® Metal to Metal screw {Material-Carbon steel EN-ISO 7049/50 Finish- ZincCoating Thickness- 4.14micron.}</p>		
	<p>The GypSerra™ Ceiling Section {Material-GI(IS513), YS260Mpa, Finish-Galvanised 150GSM(IS277)} is then fixed to the GypSerra™ Intermediate Channel {Material-GI(IS513),YS260Mpa,Finish-Galvanised 150GSM(IS277)} with the help of Gyproc® Connecting Clip {Material-High carbon spring steel wire(BS970Gr.En42)-46-48HRC,Finish-Zinc plating4-6 micron} and in direction perpendicular to the Intermediate channel at 457mm c/c.</p>		

	<p>Single layer of 12.5mm tapered edge Gypboard® Plain (conforming to IS 2095 (Part 1):2011, Certified board) is then screw fixed to ceiling section with 25mm Drywall screws {Material-Carbon steel EN-ISO 7049/50,Finish-Case hardened Grey Phosphating} at 230mm centres on ceiling section &amp; 150mm at periphery of ceiling.</p>		
	<p>Finally square and tapered edges of the boards are to be jointed and finished so as to have a flush look which includes filling and finishing with Gyproc® Pro-Fill Jointing compound (Conforms to ASTM C475), Gyproc® Joint Paper tape.</p>		
	<p>Serrated section has effective thickness of 2T (2xdepth), better load carrying capacity, enhanced screw retention, Improved acoustic performance &amp; fire resistance as compared to plain steel section. 8. All GypSerra™ metal components are Design Patented in India (325062)</p>		
	<p>NOTE:- (1) Rate includes making necessary cutouts for lighting fixtures (2) Pattas of Less than 1'-0" shall be measured in Rft. (3) Only finished surface area shall be measured for payment.(4)Supporting mamber shall be carried out as per standerd specification of manufacture and satisfaction of engineer incharge.</p>		

61	<p>Perforated Gypsum Ceiling Providing &amp; laying M/F Suspended single layer of 12 mm tapered edge Ecogyp Random perforated Gypsum Board ceiling , which includes metal frame work with using CS55, IC91, PC55, CA55 CRP surface ribbed perimeter channels with the help of nylon sleeves and screws at 610mm centres along the perimeter of ceiling. Then Ecotone CRP surface ribbed intermediate channels of size 45mm from the soffit at 1220mm centres with ecotone ultra™ CRP surface ribbed ceiling angle fixed to soffit with cleat and steel expansion fasteners. Then ecotone ultra™ CRP surface ribbed Ceiling section are then fixed to the ecotone ultra™ intermediate channel with the help of connecting clip and in direction perpendicular to the ecotone ultra™ intermediate channel at 457.5mm centres. Single layer of ecogyp perforated gypsum board of size 2440mmx1220mmx12 mm thick Random perforation acoustic gypsum board with perforation size of 8 MM/15 MM/20 MM. and using Rock wool between framing and panel with the specification of 50mm thick and 48kg density. then screw fixed to ceiling section with 25mm drywall screws at 230mm centres. Finally square and tapered edges of the boards are to be jointed and finished so as to have a flush look which includes filling and finishing with Jointing compound, Jointing paper tap and all required takels and tools (Section must from Ecotone ultra Brand)including all accessories, material &amp; labor complete as directed by Architect / Engineer - in - charge.</p>	SQM	120
62	<p>Providing and fixing Dual Roller - Zebra Blinds manual Comprising of following. ( Recommended Make Vista, Ddecor, Asian Paints, Hunter Douglas)</p>	SQM	187
	<ol style="list-style-type: none"> <li>1. Composition: 100% Polyester.</li> <li>2. Min. Fabric Thickness: 0.6 mm.</li> <li>3. Min. Fabric Weight: 200 GSM</li> <li>4. Stripe Size: Solid-10cm /Sheer-7cm</li> </ol>		

	<p><b>Control Unit</b>  To be made of high strength reinforced plastic; clutch to be made of high carbon steel of wrap spring design to transmit motion from the driven mechanism. Clutch is to be operated directionally by the use of beaded endless chain to raise and lower the blind smoothly to decide height.</p>		
	<p><b>Idler</b>  To be made of high strength reinforced plastic, consisting of an outside sleeve and centre shaft.</p> <p><b>Valance Rail</b>  Made of aluminium extruded section of high strength Al. alloy and powder coated in white. Size: 84 mm Width; min. weight 320gms/running mtr.</p> <p><b>Ceiling Rail</b>  Aluminium Extruded Rail made up of High Strength aluminium alloy and powder Coated in White. Size: 75 X 12mm; Min. Weight= 480gms/running mtr.</p> <p><b>Roller Tube</b>  Made up of High Strength Anodized Aluminium alloy Extruded grooved tube. Size: 40mm outside diameter, min. weight = 220gms/running mtr</p>		

	<p>Bottom Rail</p> <p>Round type and made up of high Strength Aluminium alloy extruded tube and power coated in white.</p> <p>Size: 14mm outside dia.; Min. weight: =220gms/running mtr</p> <p>Operating chain</p> <p>To be made of 4.5 mm plastic beads moulded on 2.0 mm thick polyester cord. The pitch of the beads is 6mm. The chain drives the sprocket fixed in the end control unit to close and open the blind. The pitch of the chain corresponds to the sprocket in perfect match for trouble free operation.</p>		
	<p>Fixing brackets and clamps</p> <p>Installation Bracket: To be made up of mild steel with white powder coating having thickness of 1.8 mm and used for mounting control unit &amp; idler.</p> <p>Ceiling Bracket: To be made up of mild steel with white powder coating having thickness of 1.0 mm and used to fix the blind to the wall or ceiling.</p> <p>End Cap</p> <p>End cap for bottom rail, Ceiling rail and valance rail to be made up of high strength molded plastic in white colour.</p>		

63	<p>Providing and fixing wall acoustical paneling Fixing with screw fixed horizontal/vertical to wall at every 600mm c/c. Metal cleat can be fixed on top edges of Sound Strut Ceiling Section 55 fixed directly by stamping to the CS55 and Intermediate Channel-91 which is screw fixed directly to the wall where ever required and using Rock wool between framing and panel with technical specification of 50 Kg Density and 50MM thick and above CS55 fixing aluminum channel with clip and fixing ecotone Slato Acoustic Panel make Slats L-16 of size 192mmx2440mmx16mm thick up to 2440mm high as per the following specification :-Slats L-16- 2mm @16mm, 32 x 128 x 2430 mm high E1 grade Pine wood base Medium Density Fiber acoustic boards with Tongue &amp; Groove Edge,2mm slot perforation @ 16mm centre, slates perforations, The acoustic should be furnished with a Black absorbent felt backing with an airflow resistance of 330-460 Ns/m<sup>3</sup> (DIN 53887),wood practical core,NRC : should be Up to 0.75,should meet the safety requirements of EN 14190. The colour of panel as approved by Architect and as specified including all accessories, material &amp;labour complete as directed by Architect / Engineer – in – charge.</p>	Sqmt	252
----	---	------	-----

64	<p>Clara Fabric Wall Paneling          Providing and fixing acoustical wall paneling with using ecotone or equivalent approved make ultra metal frame work to be fixed on wall at every 600mm horizontally and 1200 mm vertically fixed with the help of Metal cleat by using IC-91 which is screw fixed directly to the wall and fixing CS 55 on IC91 with help of clip/Screw and where ever required and using Knauf make insulation glass wool between framing and panel with technical specification of 48 Kg/m3 and 50MM thick on above CS55 fixing SONIDO acoustic board of size 1200 x 600 x 15mm fix on CS55 and then fixing 6MM thick ply wood of size 50MM than fixing vinyl grippers of ecotone make EG 15 Griper system using ,Tracks ( Perimeter Track , Half wrap, mid seam whatever is required) . Vinyl grippers must have base tapes for better grip. Fixed in between Vinyl grippers and sonido board pasting ecotone synco PF of 10X10mm thick on the acoustical panel by using adhesive as per specifications of manufacturer. Fabric Stretching Supplying and laying FR grade fabric stretch Clara Fabric shade vide catalogue Name Brass/Atom is then cut into required size and shape and stretched, inserted inside the gripper by using tools recommended by manufacturer, by Architect and as specified including all accessories, material &amp; labour complete as directed by Architect / Engineer – in – charge</p>	Sqmt	81
----	---	------	----

65	<p>Marco Polyester Fiber Acoustic Wall Paneling          Providing and fixing wall acoustical paneling Fixing Ecotone make Marcopolyester fiber acoustic wall paneling with the specification of 12MM thick Grooved panel having density of 1.90kg/m<sup>2</sup> with NRC value of 0.70 surface matt finish which is fixed with ecotone nail free silicon as required. The panel should have euro class BASTME 84-13 fire rating. The color shade of Panel as approved by Architect. Including all accessories, material &amp; labor complete as directed by Engineer.</p>	Sqmt	168
66	<p>Providing and fixing M.D.F. Wall &amp; Column Panelling for the existing surfaces to be made out of 16 gauge Aluminium framework backing of size 2" X 1" at 1' 6" to 2' 0" c/c to be covered with 10mm thick MDF board backing and finished with P.U. coating of approved shade, colour &amp; texture including teakwood moulding of 3mm size all around the periphery including groove work as directed by Architect.</p>	Sqmt	29
67	<p>Providing and fixing exterior grade Coloured Composite Panel skirting of approved make of 4mm thick xeterior grade PVDF with coil thick of 0.25mm &amp; frame work made out from Alluminium section of size 50mm X 25mm (w app = 0.57 kg/m ) having weight of 2.6 kg for 15' supproted on Masonary/RCC with the help of screws and nails and composite panel fixed with Silicon dow corning 789 Silicon sealant &amp; Grooved fixed with Silicon sealant.</p>	Sqmt	3

68	Providing and fixing Carpet flooring using Carpet of approved make, shade and pattern of the following specification:- High cut - Low loop carpet , Premium Solution Dyed Nylon with Anti Stain Treatment, 1/10 guage , minimum Pile height should be 8.0 mm Cut and 3.5 mm Loop or with acceptable tolerance , total minimum thickness 9.0 mm , Tile size sholud be minimum 500 mmx 500 mm , Secondary Back Commercial 100% Re-cyclable. Wear Warranty-product should be warranted for 10 years. Warranty with minimum weight loss of pile and colour . All yarns used are solution dyed to minimize use of water and exclude any effluent production.	Sqmt	341
69	Providing and fixing name plate/signage made out of 3mm thick ACP as signage and display of health signs / information of required size having retro reflective letters / design as per requirement, fixing the same through approved necessary hardware ,adhesivelabour charges etc. complete, work shall be carried out as per instruction of Engineer-in-charge.	Sq. Inch	50.00
70	Rafter Ligth Curve Providing and fixing Curve paneling rafter by using 18 mm ply and laminate with all material and labour etc complete as directed by Engineer.	RMT	100
71	Providing and fixing Murals of approved design and make as per direction. The design /picture shall be approved by architect .	Nos.	4.00
72	Providing, Supplying and fixing Painting of approved design and make as per direction. The design /picture shall be approved by architect .	Nos.	6.00
73	Providing and supplying fiberglass reinforced or other material planter/flower pot as per required size, shape, color finish etc... as per architects .	Nos.	10.00
74	Providing and supplying planter/flower pot .	Nos.	10.00
75	Providing and supplying artificial plants/trees/flower as per architects selection .	Nos.	25.00
76	Providing and supplying 10 inch dia SS perforated pedal dustin .	Nos.	4.00

## Approved make and model

### APPROVED BRANDS & MATERIALS

Unless otherwise mentioned specifically, the contractor should get the approval of the Client/Architect before using the materials. All makes/ brands shall be IS marked wherever applicable and shall be of the First Quality. Wherever contractor proposes to use equivalent makes (i.e. other than specified), the same shall be done only after prior approval of the Client/ Architect. Any additional expenditure and time due to this shall be solely on contractor's account and no claims whatsoever shall be entertained.

	MATERIALS	APPROVED MAKE/BRANDS
1	Modular Furniture	HOF/Godrej / Geeken/Steelcase/durian
2	Plywood	Century ply/ Greenply/ Marino
3	LAMINATE –CONFIRMING TO IS :2046-1995	Greenlam / Merino /Century LAM
4	MDF /HDF	Century / Archid /GREEN
5	Teak Wood Beading /Lipping	GHANA Teak
6	Emulsion & Enamel paint	Asian /Dulux / Berger/ ICI
7	Wall Putty	Asian/ Birla
8	Duco	Asian /Dulux / Berger/ ICI
9	Auto Closing Hinges	Haffle/ / Dorma/ Kich
10	Drawer slides, Keyboard Tray, Grommet	EG / Ebco / Ozone/ Dorma/ Inox
11	Hardware and fitting	Godrej / Haffle/ / Dorma/ Kich
12	Glass	Saint Gobain /Modiguard/Ashahi
13	Antistatic /Vinyl flooring ( 2mm THK.)	Armstrong /Royal touch
14	Adhesives	Fevicol / Araldite
15	Gypboard False Ceiling	India Gypsum ltd.,/Arm Strong
16	Patch fitting and floor spring	Dorma /Kich / Haffle/ Godrej
17	Aluminum section	Jindal / Hindalco /Domal
18	Wood Preservative	BISON of BRITISH PAINTS/Asian /Nerolac
19	Vertical/ Venetian /Roller Blinds-Zebra	VISTA LEVOLOR/ HUNTER DOGULAS / MAC
20	Sun Control film	GARWARE
21	Veneer. (4mm and paper veneer) - Group Matched, Straight grain	Century /Green /Marino

22	Block Board.	Greenlam /Century/Marino
23	GI Support System for false ceiling.	Gyproc /Armstrong
24	Plaster Boards .	Gyproc /Lafarge /Arm strong
25	Soft Board.	Jolly Board or approved by Architect
26	Screws.	GKW Nettlefold /TeknicFastners / or as Approved.
27	Floor Spring /Door Closer.	Ozone /Haffle /Godrej
28	Wooden Flooring.	Pergo /Ego /Unitex
29	Writing Board .	White Mark
30	Door Locks.	Ozone /Haffle /Godrej/ durian
31	Ceiling Tiles.	Armstrong /Aerolite /Hunter Dogulas

**LIST OF APPROVED MAKES OF ELECTRICAL SYSTEM**

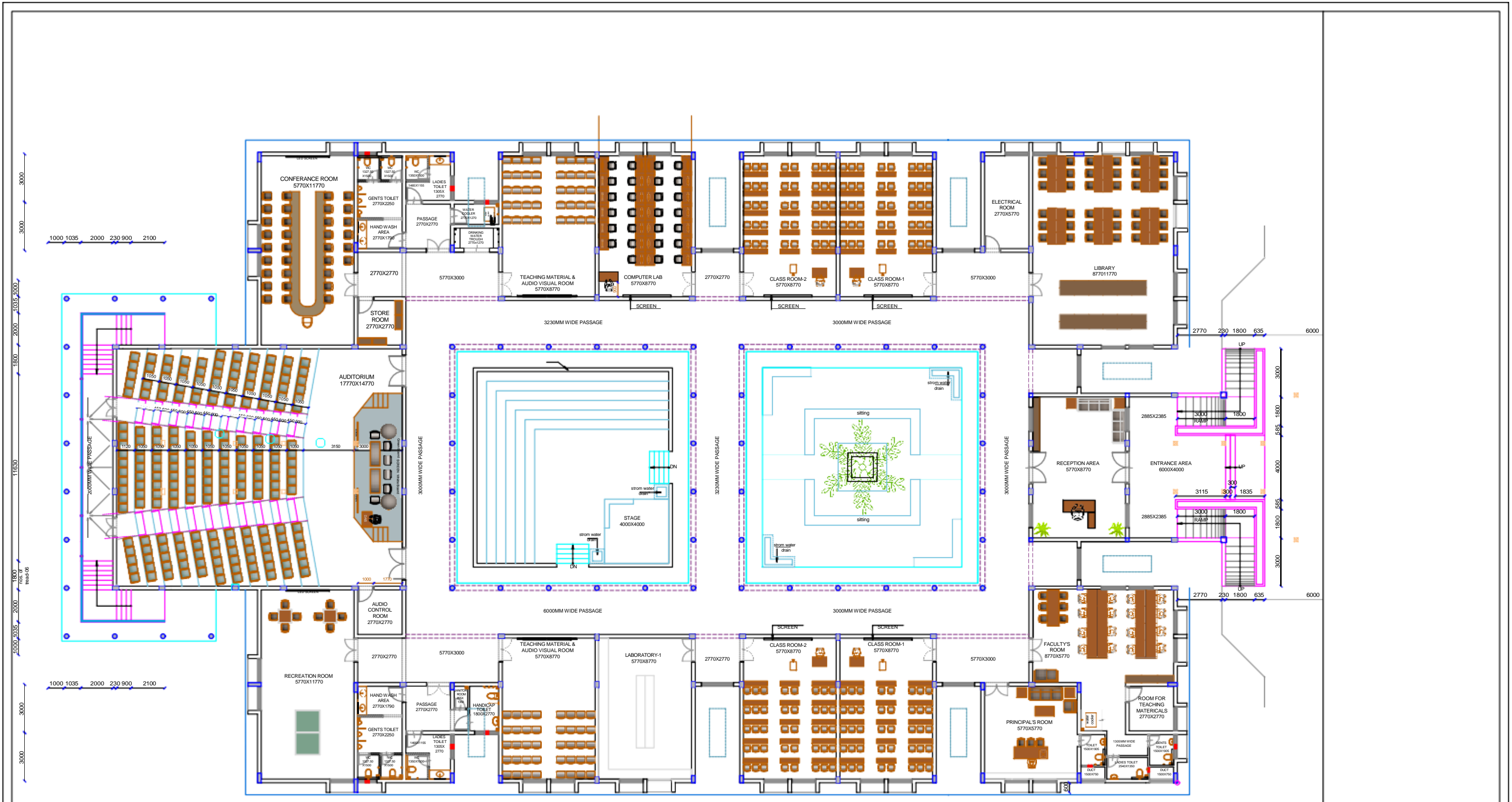
Sr/No.	Item Description	Specified Brand/Make/Manufacturer
1	Rigid PVC Conduit	ISI & FIA approved & manufactured from virgin material. Precision PPI,Polycab,Astral
2	Accessories for conduit	Same make as of pipe.
3	Flexible Copper Wires	FRLS type : KEI, Avocab, Finolex, RR Kabel
4	Switches	MK(blenze),Legrand(Arteor), Havell's(carabtree-Verona), Hager
5	Light Fixture	lighting ways, Bajaj,Phillips, Wipro, Havell's,Lighting Technologies(As suggested by Consultant - Sample to be approved )
6	Ceiling Fans	Bajaj, Havell's
7	Fan box	Cast Iron Type Only
8	Exhaust Fan	Crompton, Almonard, Bajaj, Havell's
9	PVC tape	Steel grip, Anchor
10	Distribution boards	Hager,Legrand (MDS-lexic), Schneider (MG) , L&T Factory fabricated. Double door type

11	MCB/ELMCB &Acc	Legrand (MDS-lexic), Schneider (MG) , L&T, Hager
12	LT Cables	KEI, Avocab, Finolex, Havell's, Polycab
13	Panel Fabricators	CPRI & ISO(A.D. ENTERPRISE, Themis Automation private limited, GMDT Engineering private limited) Approved panel builders only
14	Load Manager / Energy Meter:	Conzerve, Secure, Elmeasure, L&T
15	(Suitable for PC Connected and LAN with open protocol, Sample to be approved)	
16	Meters(Digital : V,A,PF etc)	Conzerve, Secure, Elmeasure, L&T
17	Timer	Theban (Indoasain), Legrand, L&T
18	Relay	Areva, Siemens, L&T, ABB,CSPC, Schnieder
19	MCCB	Legrand, Schneider (MG) , L&T,Hager
20	On Load Changeover	C&S, HPL, Havell's
21	Connectors	ELMEX, Wago
22	SFU - Switch Fuse Unit (Amps - AC 23 duty)	Schneider MG, Siemens, L&T, Havell's (AC 23duty only)
23	HRC Fuses & Fuse-Base	Schneider MG, Siemens, L&T, Havell's
24	M.S. Boxes	Fabricated out of CRCA sheets / Angle / Strip continuously welded (sample to be approved) with Powder coating / Colour coating.
25	Current Transformer	AE, Virat, Narmada
26	Indication Lamp	LED Type : Schneider, Sumo, L&T, RASS
27	Voltage Selecter Switch	L&T, Salzer
28	Ameter Selecter Switch	L&T, Salzer
29	Fabrication	CRCA Sheet -2.0mm Structure, Doors and Frames, Internal partiton 1.6mm, Gland plate-3.0mm
30	Busbar rating	Al- 1.0sqmm=0.8A

31	Power coating	Simens Grey 7tank process
32	APFC Relay	Beluk (Germani), Conzerve, Neptune ducati, L&T, Secure
33	Capacitor	L&T, Conzerv, Shreem, Legrand
34	Glands	Compression type, Heavy duty and deep threding with rubber-ring and double washers. (Sample tobe approved) HMI, Comet
35	Cable Lugs	Dowells, 3-D (Copper long nack)
36	Plug-socket (Metal Clad and Wheather proof )	Legrand, Indoasain, RR PCE, BCH, Schnieder
37	Button holder, Angle holder, ceiling rose	Anchor, CPL
38	Oil cool type Transformer	Voltamp, Crompton, ABB, Vidhyut
39	HT Joint Kit	Raychem, 3M.
40	HT Cable	KEI, Avocab, Havell's, Polycab
41	Cable Tray	Indiana, Dudhat , Neel Enterprise
42	Chemical Type Earthing	OBO, ASHLOK, JSR, AXIS
43	Lightening Surge Protector	OBO, ASHLOK, JSR, AXIS
44	DB Surge Protector	Legrand, Hager,Schnieder,OBO, L&T
45	HT VCB	ABB, Siemens, Schneider, C&S, L&T
46	Power Pack	Gogate / Eq.
47	Thermoplastic Boxes	Hensel, Spelsberg
48	Isolation Transformers	Automatic Electric, Servomax, Aplab
49	Lightning Protection System	ASHLOK, JSR, AXIS, OBO







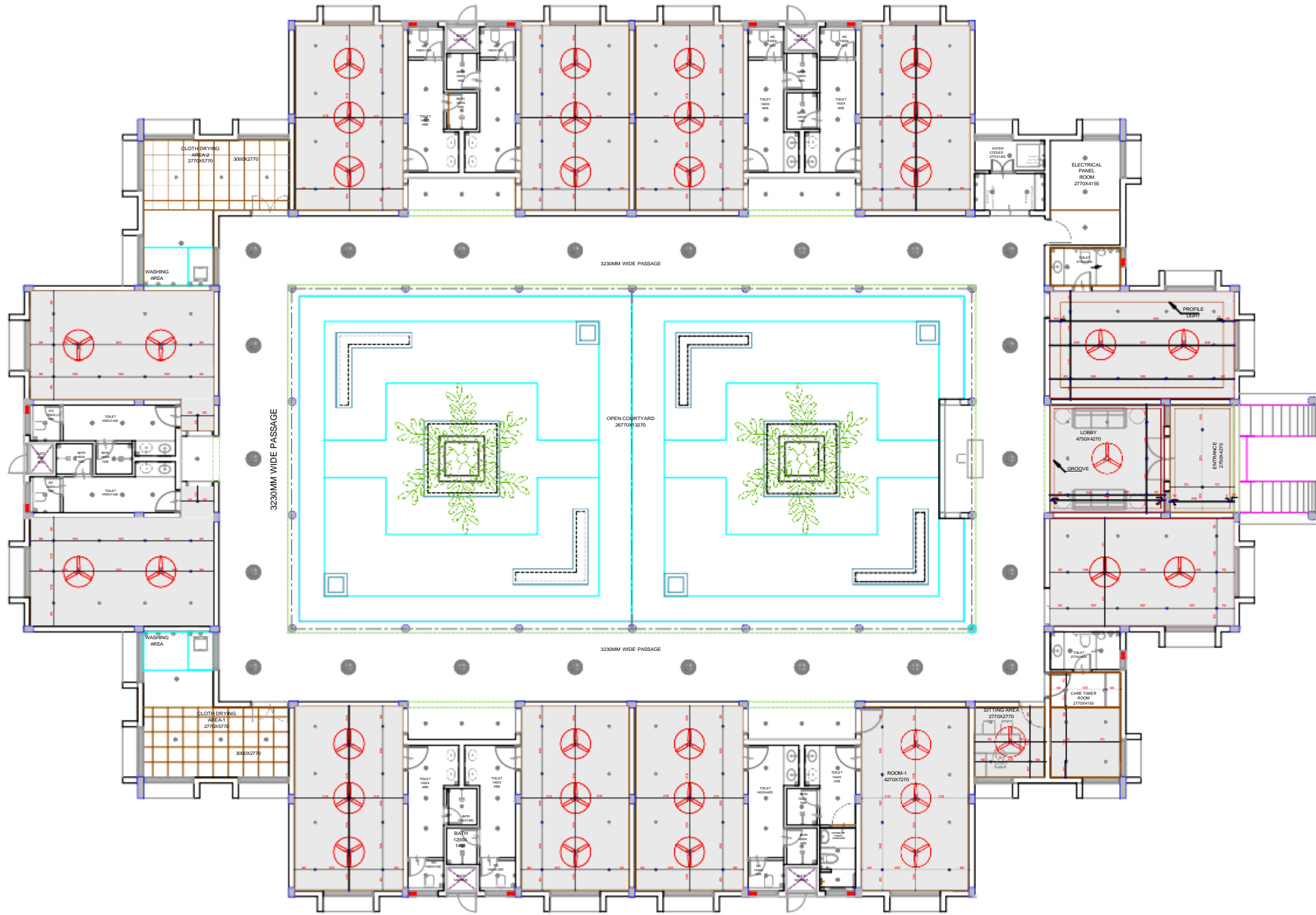
TRAINER DRAWING  
 DATE: 01/08/2024  
 CLIENT:



**TOHISION**  
 DESIGNERS & CONSULTANTS - INTERIOR  
 99/97, FORTUNE BUSINESS HUB,  
 NR. SHELL PETROL PUMP, SCIENCE CITY ROAD,  
 SOLA, AHMEDABAD-380015.  
 CONTACT: +91 8320222838 E-MAIL: vjgptohision@yahoo.co.in

TITLE: **GROUND FLOOR PLAN**

C/D NO.	TO/NO.	DATE	BY
01	01	01/08/2024	VJGPT
PROJECT	SCALE	DATE	BY
(26) AI TRAINING CENTER & FARMER TRAINING CENTER	1:100	01/08/2024	VJGPT
ARCHITECT	SCALE	DATE	BY
FARMER TRAINING CENTER & AI TRAINING CENTER, COW SANCTUARY AT TUGLAKPUR MUZAFFARNAGAR, UP.	1:100	01/08/2024	VJGPT
DATE	SCALE	DATE	BY
01/08/2024	1:100	01/08/2024	VJGPT
SCALE	DATE	DATE	BY
1:100	01/08/2024	01/08/2024	VJGPT



### LEGEND

	SURFACE LIGHT
	PANEL LIGHT
	PROFILE LIGHT
	HANGING LIGHT (CONE TYPE)

TENDER DRAWING  
DATE: 30.01.2025

**NOTE - 6mm groove to be provided between wall and the ceiling throughout the ceiling.**

REVISION DETAILS :		
REV. NO.	DATE	DESCRIPTION

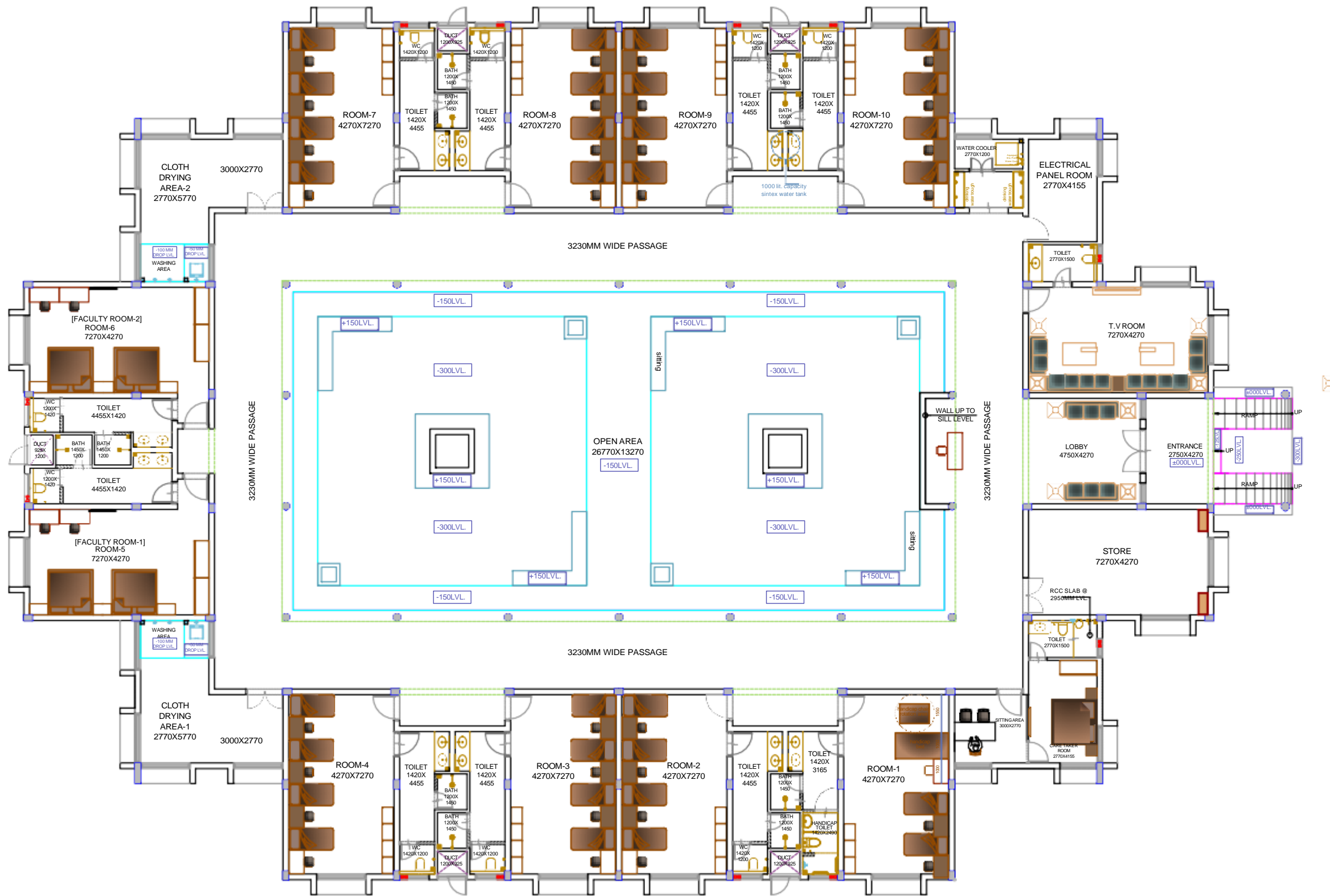
CLIENT: \_\_\_\_\_

**NDDB DAIRY SERVICES**  
 NDDB DAIRY SERVICES  
 103, HILL ROAD, CHANDRANAGAR, SINGH ROAD, NEAR KAMAL CINEMA COMPLEX, B4 BLOCK, SAFDARJUNG ENCLAVE, NEW DELHI - 110029

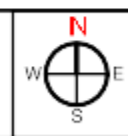
**TORSION**  
 ENGINEERS & CONSULTANTS  
 ARCHITECTS - STRUCTURE - INTERIOR  
 906-907, FORTUNE BUSINESS HUB, NR. SHELL PETROL PUMP, SCIENCE CITY ROAD, SOLA, AHMEDABAD-380060.  
 CONTACT: +91 832032835 E-MAIL: vjg@torsion@yahoo.co.in

TITLE: **GROUND FLOOR PLAN CEILING**

DWG NO.	FR-27-02	NAME OF BUILDING	[27] HOSTEL BUILDING
DEALT	ZALAK	(NOS. FOR ROOM-10)	
PRJCT. CODE	2401	PROJECT NAME	FARMER TRAINING CENTER & AI TRAINING CENTER
CHKD. BY			COW SANCTUARY AT TUGLAKPUR MUZAFFARNAGAR, UP.
DATE	24.01.2024		
SCALE	N.T.S		



FINAL DRAWING  
DATE: 01.01.2025



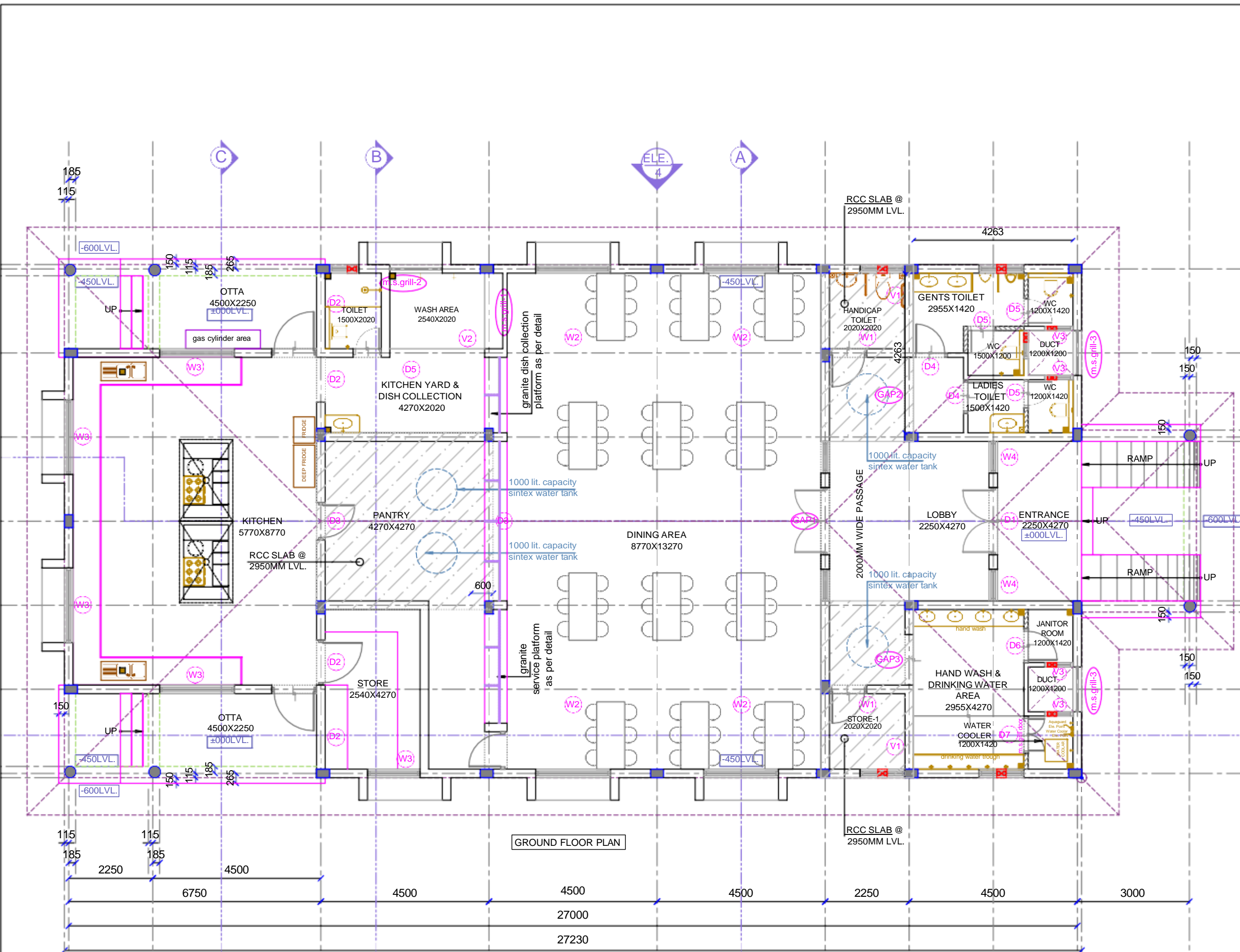
CLIENT:

**NDDB DAIRY SERVICES**  
 NDDB DAIRY SERVICES  
 103/3, HUDA, 13TH MILE, NH-10,  
 SINGH ROAD, NEAR KAMAL CINEMA  
 COMPLEX, B4 BLOCK,  
 SAFDARJUNG ENCLAVE,  
 NEW DELHI - 110029

**TORSION**  
 ENGINEERS & CONSULTANTS  
 ARCHITECTURE • STRUCTURE • INTERIOR  
 906-907, FORTUNE BUSINESS HUB,  
 NR. SHELL PETROL PUMP, SCIENCE CITY ROAD,  
 SOLA, AHMEDABAD-380060  
 CONTACT: +91 832032835 E-MAIL: vjtorson@yahoo.co.in

TITLE: **GROUND FLOOR PLAN**

DWG NO.	FR-27-01	NAME OF BUILDING	[27] HOSTEL BUILDING
DEALT	MUSKAN	(NOS. FOR ROOM-10)	
PRJCT. CODE	2401	PROJECT NAME	FARMER TRAINING CENTER & AI TRAINING CENTER
CHKD. BY			COW SANCTUARY AT TUGLAKPUR MUZAFFARNAGAR, UP.
DATE	24.01.2024		
SCALE	NTS		



GROUND FLOOR PLAN

TENDER DRAWING  
DATE : 30.01.2026

CLIENT



**NDDB DAIRY SERVICES**  
HEAD OFFICE: CHALANBY BARNOLI  
SINGH ROAD, NEAR - RAJAL CINEMA  
MUSKAN, DISTRICT - MUKHESHWAR  
H.NO. 14/11, PHASE - I, S.O. 5/4  
NEW DELHI - 110062





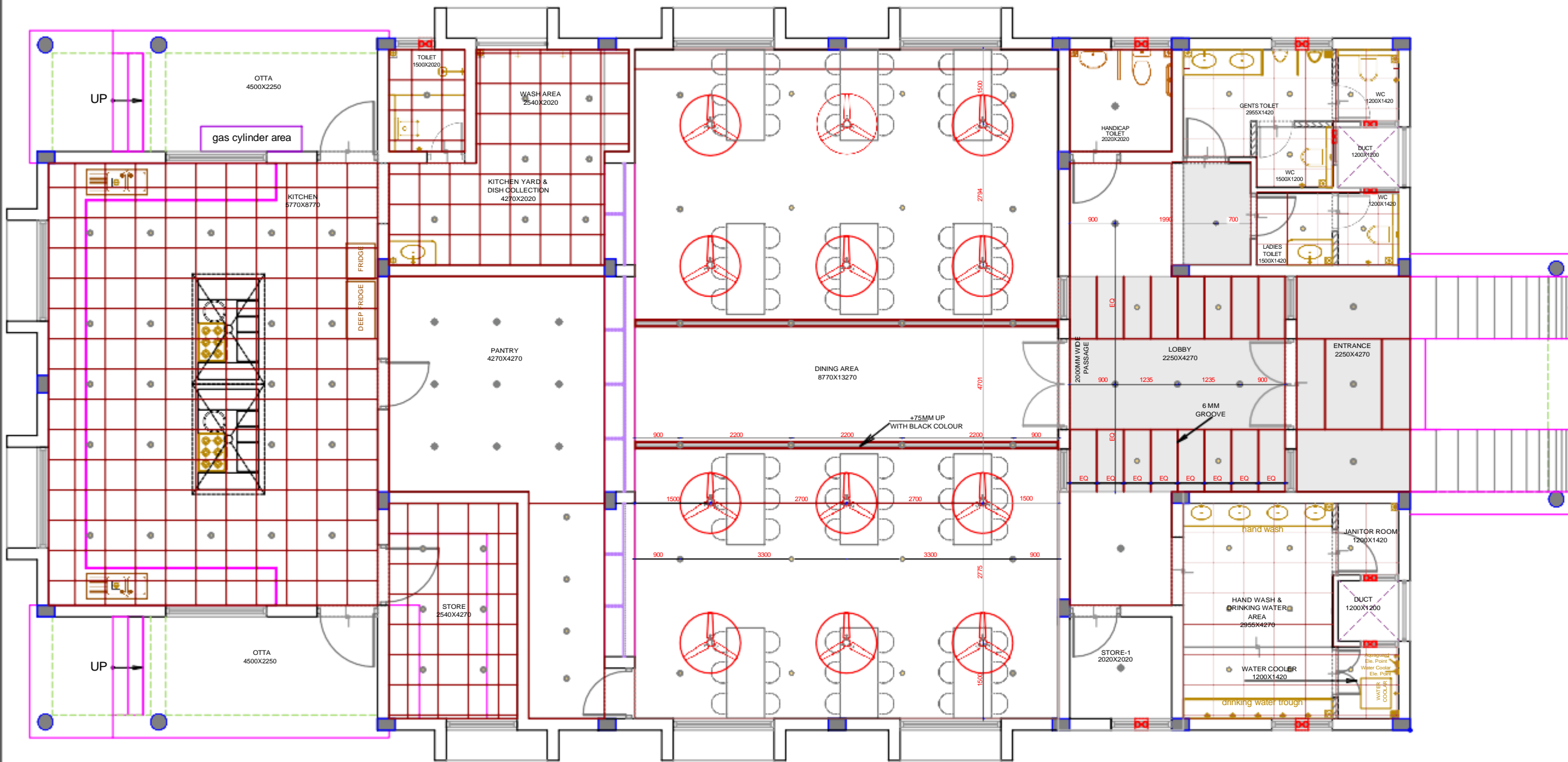
**TORSION**  
ENGINEERS & CONSULTANTS  
ARCHITECTURE • STRUCTURE • INTERIOR  
906-907, FORTUNE BUSINESS HUB,  
NR. SHELL PETROL PUMP, SCIENCE CITY ROAD,  
SOLA, AHMEDNAGAR-380009.  
CONTACT: +91 832022835 E-MAIL: vtg@torsion@yahoo.co.in

TITLE: GROUND FLOOR PLAN

DWG NO.	FR-25-01	[28] CANTEN BUILDING
DEALT	MUSKAN	
PRJCT CODE	2401	FARMER TRAINING CENTER & AI TRAINING CENTER
CHKD. BY		COW SANCTUARY AT TUGLAKPUR MUZAFFARNAGAR, UP.
DATE	24.01.2024	
SCALE	N.T.S.	

# LEGEND

	SURFACE LIGHT
	PANEL LIGHT




TENDER DRAWING  
DATE : 30.01.2026

NOTE - 6mm groove to be provided  
between wall and the ceiling  
throughout the ceiling .

REVISION DETAILS :		
REV. NO.	DATE	DESCRIPTION



CLIENT:



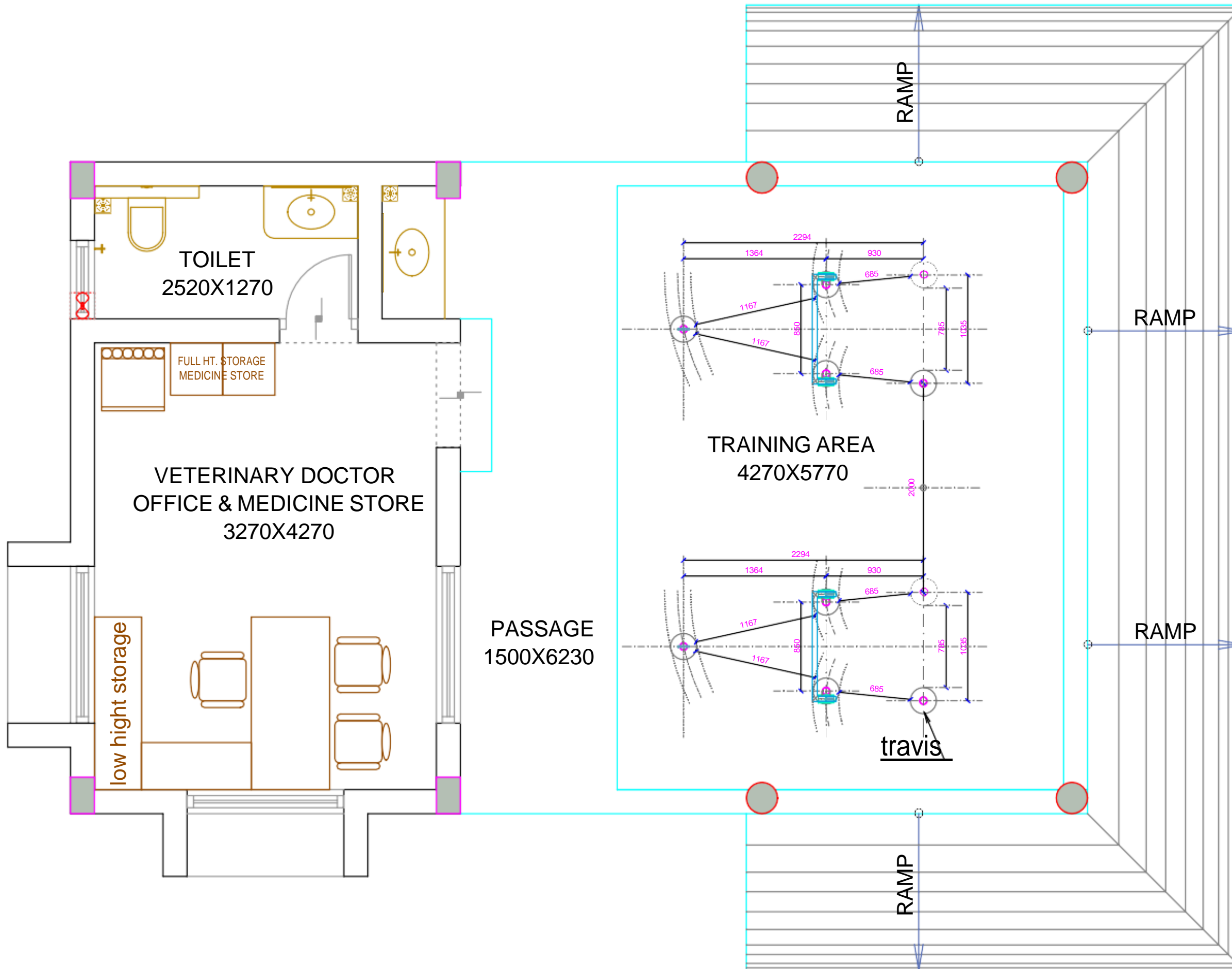
**NDDB DAIRY SERVICES**  
 HEAD OFFICE: CHAUDHARY BHANUJI  
 SINGH ROAD, NEAR - RAJAL CINEMA  
 112201, LUDHIANA  
 1441441100011001691  
 NEW DELHI - 110028



**TORSION**  
 ENGINEERS & CONSULTANTS  
 ARCHITECTURE • STRUCTURE • INTERIOR  
 906-907, FORTUNE BUSINESS HUB,  
 NR. SHELL PETROL PUMP, SCIENCE CITY ROAD,  
 SOLA, AHMEDABAD-380060.  
 CONTACT: +91 832022835 E-MAIL: vgstorsion@yahoo.co.in

TITLE: **GROUND FLOOR CEILING**

DWG NO.	FR-25-02	NAME OF BUILDING:	[28] CANTEEN BUILDING
DEALT	ZALAK	PROJECT NAME	FARMER TRAINING CENTER & AI TRAINING CENTER
PRJCT CODE	2401	LOCATION	COW SANCTUARY AT TUGLAKPUR MUZAFFARNAGAR, UP.
CHCKD. BY		DATE	24.01.2024
SCALE	N.T.S.		



TENDER DRAWING  
DATE : 30.01.2026



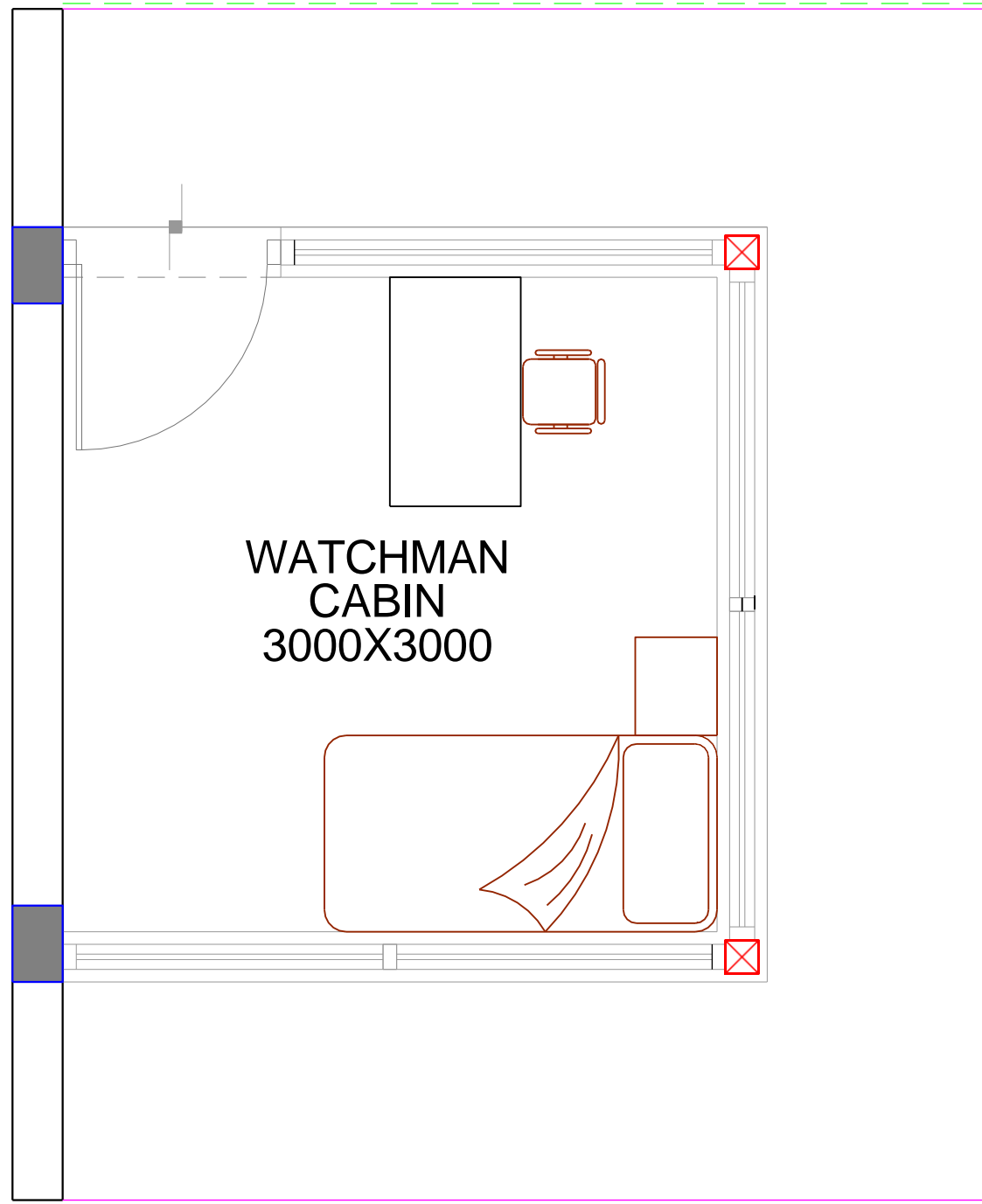
**NDDB DAIRY SERVICES**  
NDDB DAIRY SERVICES  
NDDB DAIRY SERVICES  
NDDB DAIRY SERVICES

**TORSION**  
ENGINEERS & CONSULTANTS  
ARCHITECTURE • STRUCTURE • INTERIOR  
906-907, FORTUNE BUSINESS HUB,  
NR. SHELL PETROL PUMP, SCIENCE CITY ROAD,  
SOLA, AHMEDNAGAR-431009.  
CONTACT: +91 832022835 E-MAIL: vgstorsion@yahoo.co.in

TITLE: GROUND FLOOR PLAN, ELEVATION : 1, 2, 3

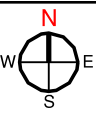
DWG NO.	FR-29-01	NAME OF BUILDING	[29] TRAINING SHED FOR TRAINEES
DEALT	MUSKAN	PROJECT NAME	FARMER TRAINING CENTER & AI TRAINING CENTER
PRJCT CODE	2401	DATE	24.01.2024
CHCKD. BY		SCALE	N.T.S.

COW SANCTUARY AT TUGLAKPUR MUZAFFARNAGAR, UP.



WATCHMAN  
CABIN  
3000X3000

TENDER DRAWING  
DATE : 30.01.2026



CLIENT:

**NDDB DAIRY SERVICES**  
NDDB HOUSE, CHAUDHARY JHANDU  
SINGH ROAD, NEAR KAMAL CINEMA  
COMPLEX, B4 BLOCK,  
SAFDARJUNG ENCLAVE,  
NEW DELHI - 110029

**TORSION**  
ENGINEERS & CONSULTANTS  
ARCHITECTURE • STRUCTURE • INTERIOR  
906-907, FORTUNE BUSINESS HUB,  
NR. SHELL PETROL PUMP, SCIENCE CITY ROAD,  
SOLA, AHMEDABAD-380060  
CONTACT: +91 8320322835 E-MAIL: vgstorsion@yahoo.co.in

TITLE: GROUND FLOOR PLAN, ELEVATION : 1, 2, 3

DWG NO.	FR-32-01	NAME OF BUILDING:	[29] TRAINING SHED FOR TRAINEES
DEALT	ZALAK		
PRJCT. CODE	2401	PROJECT NAME:	FARMER TRAINING CENTER & AI TRAINING CENTER
CHCKD. BY			COW SANCTUARY AT TUGLAKPUR MUZAFFARNAGAR, UP.
DATE	24.01.2024		
SCALE	N.T.S		